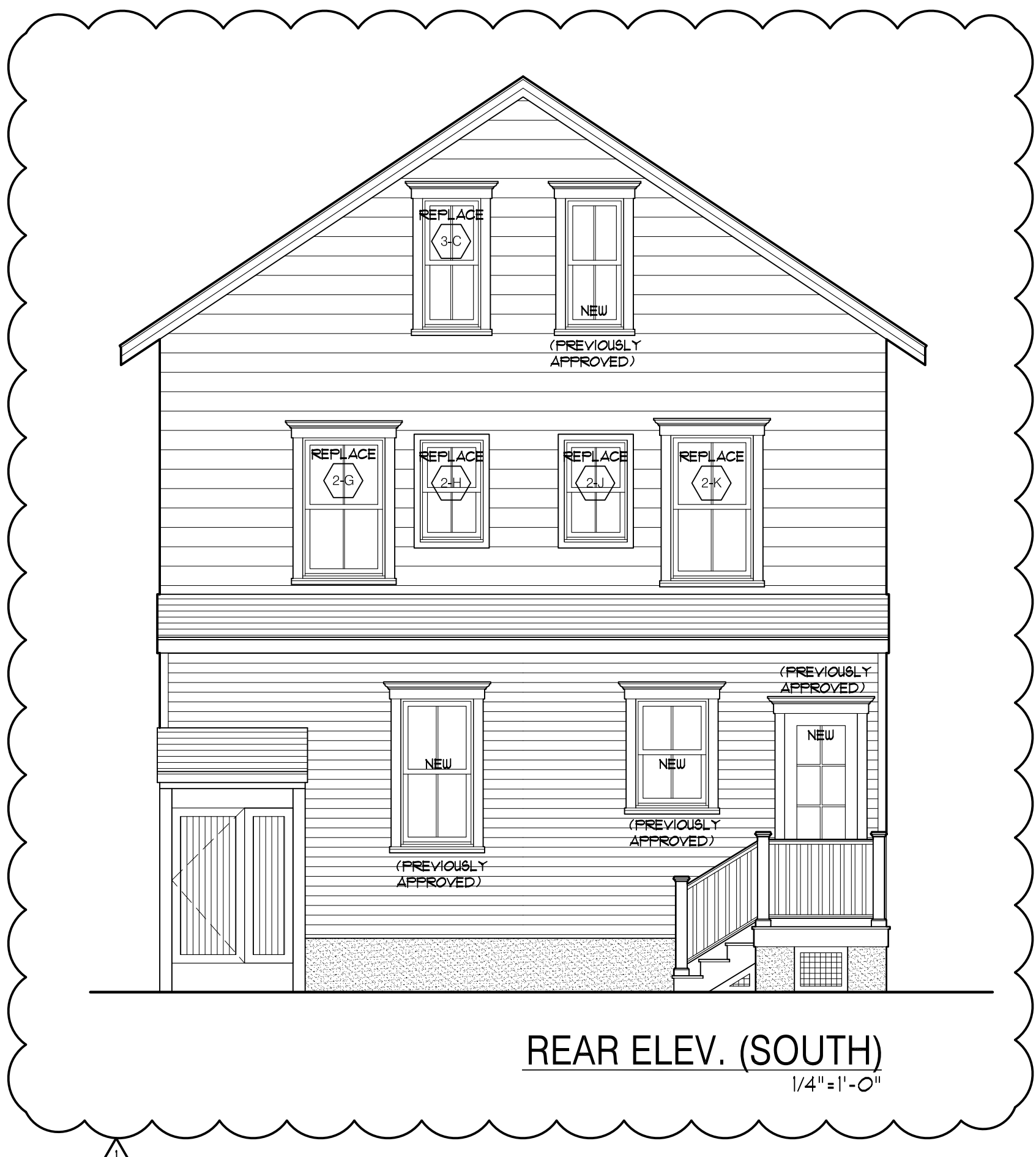


FRONT ELEV. (NORTH)  
1/4"=1'-0"



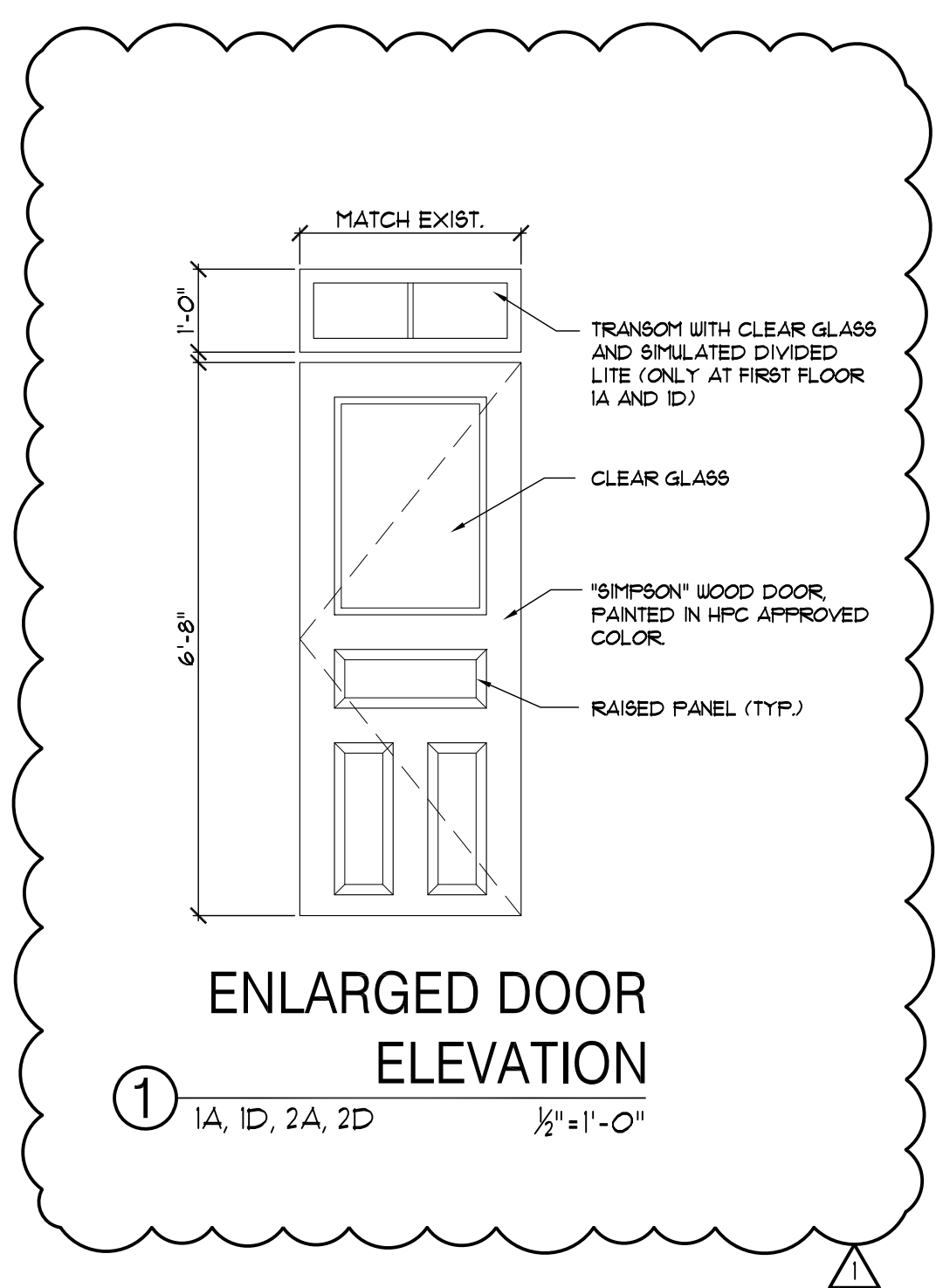
SIDE ELEV. (WEST)  
1/4"=1'-0"



REAR ELEV. (SOUTH)  
1/4"=1'-0"



SIDE ELEV. (EAST)  
1/4"=1'-0"



ENLARGED DOOR ELEVATION  
1/2"=1'-0"

PROPOSED ADDITION / ALTERATION:  
**SCHUCHMAN/LAMBDIN**  
RESIDENCE  
100 Abbott Avenue  
Ocean Grove, NJ 07756

SEAL:  
*Stephen J. Carls*  
Stephen J. Carls, AIA  
NJ LIC # A100689

**SHORE POINT**  
ARCHITECTURE, PA  
108 South Main Street, Ocean Grove, New Jersey 07756  
P: 732.774.6900 F: 732.774.7250 www.shorepointarch.com

PROPOSED AMENDMENTS  
TO PREVIOUSLY APPROVED  
ELEVATIONS  
SCALE: AS SHOWN DRAWN: ABF

DATE	REVISION SUBMISSION
09/01/2022	INITIAL SUBMISSION
11/16/22	R-1 HFC CODE UPDATE

JOB NUMBER  
2022-30

**A-3a**  
Schuchman/  
Lambdin