

SHORE POINT ARCHITECTURE, PA

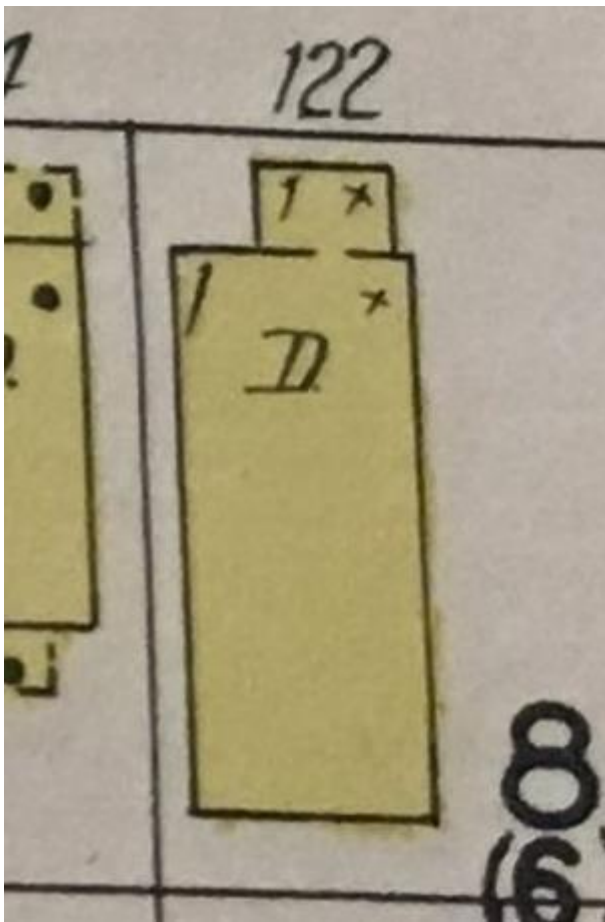
HPC APPLICATION TEXT

Date: November 4, 2022
SPA Job Number: 2022-10 (Anthony Residence)
Property Address: 122 Abbott Avenue (Block 240, Lot 3)

Background

The existing house is a one story craftsman style bungalow that was constructed, according to the tax records, in 1935. We believe the house may have been constructed earlier (likely circa 1920's), as it appears on the 1930 Sanborn map (see below).

1930 Sanborn Map



Photos of Existing Conditions



Shore Point Architecture, PA
108 South Main Street Ocean Grove, NJ 07756
P: 732.774.6900 F: 732.774.7250

Summary of Proposed Work

- Remove existing one-story enclosed front “sunroom” and replace with new one-story wood framed open wood porch, to match existing “sunroom” footprint.
- Porch will be roofed with a 4:12 pitch hip roof, and will include 6” sq. cellular pvc column wraps, cellular pvc trim, cellular PVC newel wraps, and custom railings with wood top/bottom rail and CPVC balusters. Due to the narrow profile of the top rail (“key hole” style), the balusters are 1-1/4” and they are spaced at 3-1/2” o.c. Porch floor will be t&g mahogany with a CPVC beadboard ceiling. CMU piers with a thin brick veneer will be provided as well as wood lattice with a CPVC frame.
- On the east side of the house, we propose to remove and replace an existing 6:1 wood DH window with a new 6:1 clad wood Andersen 400 series DH window, matching width, shorter window. The reason for this request is to allow for the installation of a kitchen cabinet below this window, in a modified kitchen layout.



- Replace all existing basement windows with new vinyl awning windows in-kind.

Shore Point Architecture, PA
108 South Main Street Ocean Grove, NJ 07756
P: 732.774.6900 F: 732.774.7250

- Remove and replace existing single, ¼ round window with new DH window as indicated on the elevation drawings.



- Demolish existing brick chimney (shown below) and replace asphalt roof shingles throughout.




Shore Point Architecture, PA
108 South Main Street Ocean Grove, NJ 07756
P: 732.774.6900 F: 732.774.7250

- Remove all layers of cladding and siding and install new hardie plank clapboard siding, smooth finish, 8" exposure.
- Replace existing K-Style Gutters and install new prefinished aluminum half round gutters and leaders throughout.
- Paint in HPC approved color scheme (see cut sheets below)

Cut sheets of proposed products

- Roof shingles – Fox Hollow Gray



Timberline HDZ® Shingles



Fox Hollow Gray



- Newel Wrap – SW 7005 Pure White

VERSAWRAP



YOU'LL GET WRAPPED UP IN US.

When contractors and remodelers asked us to make covering wood posts easier, we delivered. VERSAWRAP saves time without sacrificing esthetic options.

YOU'LL GET WRAPPED UP IN US | VERSAWRAP 18

VERSAWRAP™

EXPERIENCE THE VERSAWRAP

At VERSATEX, we pride ourselves on coming up with innovative ways to make the builders' lives easier during installation. When we were asked to make covering wood posts more efficient with still improving aesthetics, we delivered the VERSAWRAP.

The unique design of VERSAWRAP features a product cut with pre-mitered grooves and friction fit joints. The joints are inter-locking with a unique design to allow for easy alignment and additional surface area for bonding.

SAVE TIME & MONEY

Now, instead of cutting four individual joints or miterers in the field, you can wrap smarter

with VERSAWRAP column wraps. No more field cutting and struggling to match seams. The VERSAWRAP line includes Classic and Raised Panel designs as a one-piece wrap with accessory options, and a four-piece Tapered design that includes Craftsman-style accessories.

GO BEYOND...

Our Classic and Raised Panel styles are created from a single piece of VERSATEX cellular PVC with three pre-mitered grooves that fold around the structural post and lock together with a friction-fit miter lock joint. Just apply your PVC glue, fold the VERSAWRAP around your structural column, secure in place, peel the tape, and walk away.

CLASSIC	Actual Inside Dimension	Actual Outside Dimension
4" X 4" X 8'6"	3 3/4" X 3 3/4" X 8'6"	4 3/4" X 4 3/4" X 8'6"
4" X 4" X 10'	3 3/4" X 3 3/4" X 10'	4 3/4" X 4 3/4" X 10'
6" X 6" X 8'6"	5 3/4" X 5 3/4" X 8'6"	6 3/4" X 6 3/4" X 8'6"
6" X 6" X 10'	5 3/4" X 5 3/4" X 10'	6 3/4" X 6 3/4" X 10'
8" X 8" X 8'6"	8 1/2" X 8 1/2" X 8'6"	9 1/2" X 9 1/2" X 8'6"
8" X 8" X 10'	8 1/2" X 8 1/2" X 10'	9 1/2" X 9 1/2" X 10'
12" X 12" X 12'	9 3/4" X 9 3/4" X 12'	11 1/4" X 11 1/4" X 12'

*Special 10' Classic wraps available (minimum quantities apply)
 • All 4", 6", and 8" VERSAWRAPs are made from actual 1/2" thick VERSATEX 12" wraps are made from actual 3/4" thick material.

RAISED PANEL	Actual Inside Dimension	Actual Outside Dimension
6" X 6" X 8'6"	5 3/4" X 5 3/4" X 8'6"	6 3/4" X 6 3/4" X 8'6"
6" X 6" X 10'	5 3/4" X 5 3/4" X 10'	6 3/4" X 6 3/4" X 10'
8" X 8" X 8'6"	8 1/2" X 8 1/2" X 8'6"	9 1/2" X 9 1/2" X 8'6"
8" X 8" X 10'	8 1/2" X 8 1/2" X 10'	9 1/2" X 9 1/2" X 10'

• Panels start 18 1/2" from bottom with raling gap from 30 3/4" to 38 1/2". Clearance above the top panel measures 8 3/4".
 • For best aesthetic results, painting is recommended to prevent dirt accumulation where panel is milled into product.



versatex.com | 724.857.1111

Shore Point Architecture, PA
 108 South Main Street Ocean Grove, NJ 07756
 P: 732.774.6900 F: 732.774.7250

- Column – SW 7005 Pure White



FYPON | Fast Facts
Column Wraps

Fypont Fast Facts
Column Wraps

PremiumSelect Features

PremiumSelect Square Column Wrap

- Choose from semi-assembled Flat, Fluted, Raised and Recessed panel styles.
- Available in widths measuring 6" (flat panel only), 8", 10" and 12" and heights measuring 72", 96", 108", 120" and 144".
- Traditional-style cap and base come standard.
- Installation materials are included.

PremiumSelect Tapered Column Wrap

- Choose from semi-assembled Flat, Raised and Recessed panel styles.
- Available shaft widths (top width x bottom width) include 8" x 12", 11" x 16", 13" x 20" and 16" x 24".
- Available in heights measuring 48", 54", 60", 66", 72" and 96".
- Craftsman-style cap and base come standard.
- Installation materials are included.

Structural Post Kit

- Available in heights measuring 96", 108" and 120".
- Fits column wraps measuring 6" and wider.
- Kit includes aluminum post, 4" x 4" post mount and screw pack.
- Load-bearing capacity of 5,000 lbs.
- Average wind uplift resistance of 1,200 lbs.

Accessories

- Cap and base style options include Greek, Plain, Traditional, Roman and Tuscan.
- Optional neck mould also available.



- Porch Ceiling – SW 7005 Pure White

VERSATEX
BUILDING PRODUCTS

THE VERSATEX WAY | DISCOVER | PRODUCTS | RESOURCES | COMPANY | FOR PROS

T&G PROFILES

VERSATEX Tongue-and-Groove & Beadboard Profiles: Get Your Groove On.

With the wide range of products and styles available, you'll find the right profile for your project. From traditional beadboard and baseboard to modern, minimalist profiles, we have you covered. Versatex T&G offers you the best quality products at the best price.

- Our traditional beadboard profiles are 1/2" x 1/2" wide, providing 100% surface coverage for many applications.
- Our modern T&G beadboard profiles are 1/2" x 1/2" wide, providing 100% surface coverage for many applications.
- Our smooth finished baseboard and crown molding is available in a variety of styles, including traditional and modern.

Watch on YouTube

BEADBOARD PROFILES

- VERSATEX BEADBOARD
- VERSATEX MODERN BEADBOARD
- VERSATEX BEADBOARD
- VERSATEX BEADBOARD

T&G PROFILES

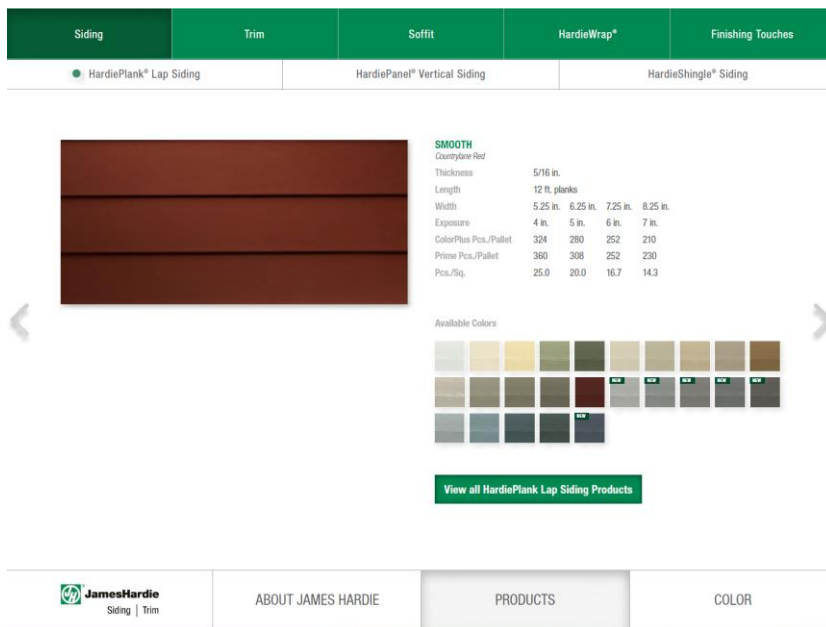
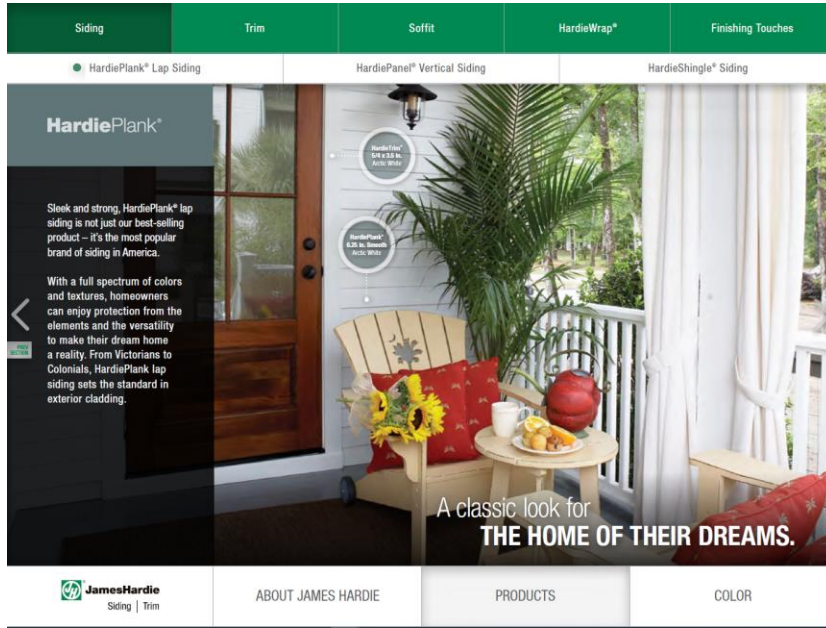
Profile Size	Color	Length	Width	Height
1/2" x 1/2" (Beadboard)	White	10'	1/2"	1/2"
1/2" x 1/2" (Beadboard)	White	10'	1/2"	1/2"
1/2" x 1/2" (Beadboard)	White	10'	1/2"	1/2"
1" x 1/2" (Beadboard)	White	10'	1"	1/2"
1/2" x 1/2" (Beadboard)	White	10'	1/2"	1/2"

Reference Documents

- INSTALLATION GUIDES
- TECHNICAL INFO
- CAD

Shore Point Architecture, PA
108 South Main Street Ocean Grove, NJ 07756
P: 732.774.6900 F: 732.774.7250

- Fiber Cement Clapboard – Van Deusen Blue HC-156

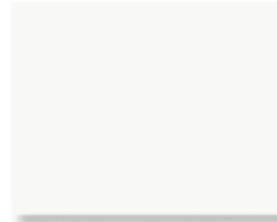


Shore Point Architecture, PA
108 South Main Street Ocean Grove, NJ 07756
P: 732.774.6900 F: 732.774.7250

- Gutters – Prefinished White



Half-Round Aluminum Gutter



30° White

- Porch Flooring is Mahogany Wood with Clear-Coat Finish
- Fascias and Trim shall be SW7005 – Pure White
- Thin Brick Veneer Porch Piers – Old Detroit Thin Brick

Design Studios

Careers + Culture

Contact Us



Stone ▾

Wall Systems ▾

Resources + Events ▾



Olde Detroit Thin Brick



Save Product



Compare Brick

[See this on your house](#)



[Where To Buy](#) [Contact Us](#)

Shore Point Architecture, PA
 108 South Main Street Ocean Grove, NJ 07756
 P: 732.774.6900 F: 732.774.7250

- Andersen 400S Double Hung Windows – COLOR TO MATCH EXIST.



400 SERIES



TILT-WASH DOUBLE-HUNG WINDOWS

Andersen® 400 Series tilt-wash double-hung windows are engineered to provide outstanding performance and style. Combined with the tilt-to-clean sash, it's easy to see why it's our best selling double-hung. Exteriors use three different levels of protection from the elements. On the inside you have the choice of natural pine or low-maintenance white, dark bronze or black* finish. For added style there is a wide range of grille patterns and hardware options.

DURABLE

- Virtually maintenance-free
- Perma-Shield® exteriors never need painting and won't peel, blister, flake or corrode**
- Frame exterior is protected by a tough vinyl cover that resists dents and repels water and provides long-lasting protection
- Available with Stormwatch® protection for coastal areas

ENERGY EFFICIENT

- Weather-resistant construction for greater comfort and energy efficiency
- Weatherstripping is designed to seal out drafts, wind and water
- Variety of Low-E4® glass options are available to help control heating and cooling costs in any climate
- Many 400 Series tilt-wash double-hung windows have options that make them ENERGY STAR® v. 6.0 certified throughout the U.S.



BEAUTIFUL

- Seven exterior color options
- Natural pine, white, dark bronze or black* interiors
- Add style with grilles, exterior trim or patterned glass

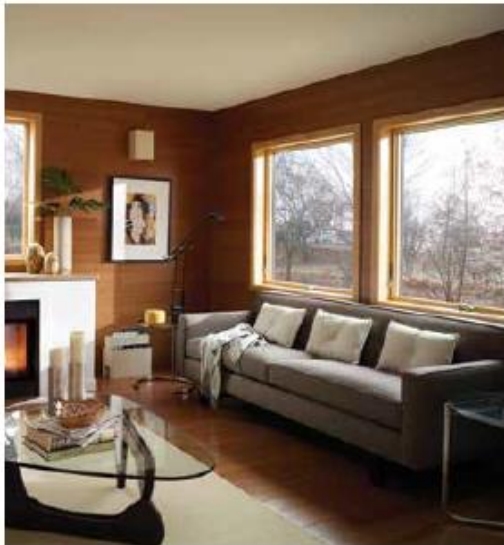
EXTERIOR COLORS



*Dark Bronze and Black interiors are only available with Dark Bronze and Black exteriors respectively. See your Andersen dealer for availability. **Visit andersenwindows.com/warranty for details. "ENERGY STAR" is a registered trademark of the U.S. Environmental Protection Agency.

Shore Point Architecture, PA
 108 South Main Street Ocean Grove, NJ 07756
 P: 732.774.6900 F: 732.774.7250

- Andersen 400S Awning Windows – COLOR TO MATCH EXIST.



AWNING WINDOWS

Built on the same platform as our legendary casement window, 400 Series awning windows deliver the same performance and beauty. Their solid wood frames and sash provide strength, while the vinyl covering and weather-tight construction keep the window and your home protected from the elements. On the inside you have the choice of natural pine or a low-maintenance white, dark bronze or black* finish. For added style there is a wide range of grille, hardware and art glass options.

DURABLE

- Virtually maintenance-free
- Perma-Shield® exteriors never need painting and won't peel, blister, flake or corrode**
- Frame exterior is protected by a tough vinyl cover that resists dents and repels water and provides long-lasting protection
- Available with Stormwatch® protection for coastal areas

ENERGY EFFICIENT

- Weather-resistant construction for greater comfort and energy efficiency
- Weatherstripping is designed to seal out drafts, wind and water
- Variety of Low-E4® glass options are available to help control heating and cooling costs in any climate
- Many 400 Series awning windows have options that makes them ENERGY STAR® v. 6.0 certified throughout the U.S.



BEAUTIFUL

- Seven exterior color options
- Natural pine, white, dark bronze or black* interiors
- Extensive hardware selection
- Add style with grilles, exterior trim, art glass or patterned glass

EXTERIOR COLORS



*Dark Bronze and Black interiors are only available with Dark Bronze and Black exteriors respectively. See your Andersen dealer for availability. **Visit andersenwindows.com/warranty for details. *ENERGY STAR® is a registered trademark of the U.S. Environmental Protection Agency.

Shore Point Architecture, PA
 108 South Main Street Ocean Grove, NJ 07756
 P: 732.774.6900 F: 732.774.7250