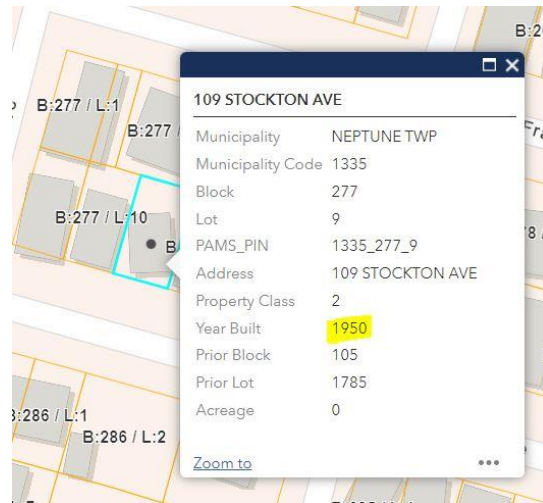


SHORE POINT ARCHITECTURE, PA

HPC COA APPLICATION TEXT

Date: February 16, 2024
SPA Job Number: 2022-29 (Bury Residence)
Property Address: 109 Stockton Avenue

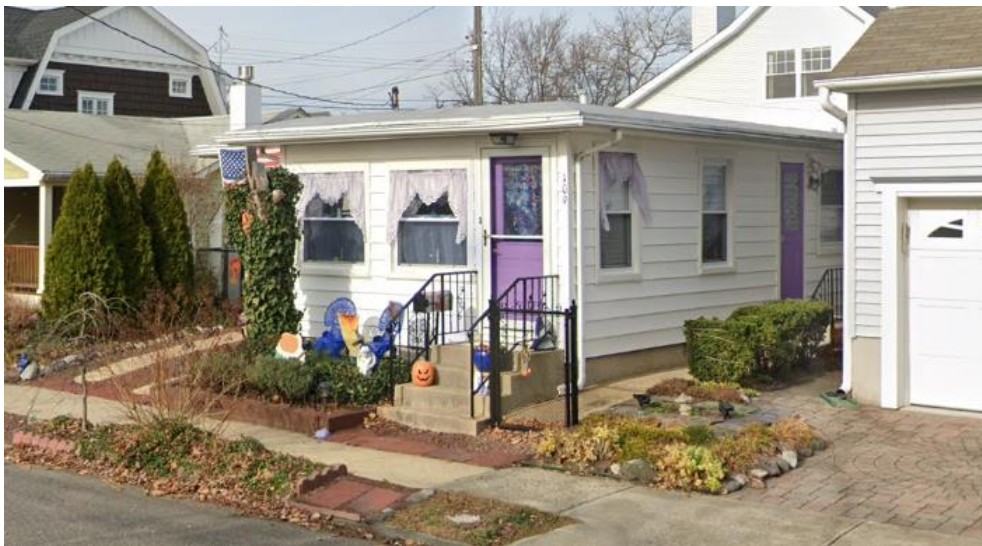
TAX RECORD: According to the tax records, the existing house was constructed in 1950 and is therefore an “other structure”.



PHOTOS OF EXISTING CONDITIONS



108 South Main Street Ocean Grove, NJ 07756
P: 732.774.6900 F: 732.774.7250



SUMMARY OF PROPOSED WORK

- Second + half story addition over the existing building footprint (Note: the addition is inset 1' on the east side to allow for required 2' setback from face of new gutters)
- New covered stair, entry, and outdoor shower is proposed at the rear
- The existing attached garage will be eliminated and a new one-story front porch will be constructed
- New site improvements as indicated including new walkways, new AC condensers
- New Andersen 400 series windows with simulated divided lites
- New Hardie Plank smooth finish clapboard siding, CPVC trim, Composite Columns, Intex Railings, and Aeratis T&G porch flooring

Shore Point Architecture, PA
108 South Main Street Ocean Grove, NJ 07756
P: 732.774.6900 F: 732.774.7250

CUT SHEETS

Andersen 400 Series Tilt-Wash Double-Hung Windows – Exterior Pre-finished Black



400 SERIES



TILT-WASH DOUBLE-HUNG WINDOWS

Andersen® 400 Series tilt-wash double-hung windows are engineered to provide outstanding performance and style. Combined with the tilt-to-clean sash, it's easy to see why it's our best selling double-hung. Exteriors use three different levels of protection from the elements. On the inside you have the choice of natural pine or low-maintenance white, dark bronze or black* finish. For added style there is a wide range of grille patterns and hardware options.

DURABLE

- Virtually maintenance-free
- Perma-Shield® exteriors never need painting and won't peel, blister, flake or corrode**
- Frame exterior is protected by a tough vinyl cover that resists dents and repels water and provides long-lasting protection
- Available with Stormwatch® protection for coastal areas

ENERGY EFFICIENT

- Weather-resistant construction for greater comfort and energy efficiency
- Weatherstripping is designed to seal out drafts, wind and water
- Variety of Low-E4® glass options are available to help control heating and cooling costs in any climate
- Many 400 Series tilt-wash double-hung windows have options that make them ENERGY STAR® v. 6.0 certified throughout the U.S.



BEAUTIFUL

- Seven exterior color options
- Natural pine, white, dark bronze or black* interiors
- Add style with grilles, exterior trim or patterned glass

EXTERIOR COLORS



*Dark Bronze and Black interiors are only available with Dark Bronze and Black exteriors respectively. See your Andersen dealer for availability. **Visit andersonwindows.com/warranty for details. "ENERGY STAR" is a registered trademark of the U.S. Environmental Protection Agency.

Shore Point Architecture, PA
108 South Main Street Ocean Grove, NJ 07756
P: 732.774.6900 F: 732.774.7250



400 SERIES



CASEMENT WINDOWS

Andersen® 400 Series casement windows are built to perform beautifully. Their solid wood frames and sash provide strength, while the vinyl covering and weather-tight construction keep the window and your home protected from the elements. On the inside you have the choice of natural pine or a low-maintenance white, dark bronze or black* finish. For added style there is a wide range of grille, hardware and art glass options. It's no wonder that they are our best-selling windows of all time.

DURABLE

- Virtually maintenance-free
- Perma-Shield® exteriors never need painting and won't peel, blister, flake or corrode**
- Frame exterior is protected by a tough vinyl cover that resists dents and repels water and provides long-lasting protection
- Available with Stormwatch® protection for coastal areas

ENERGY EFFICIENT

- Weather-resistant construction for greater comfort and energy efficiency
- Weatherstripping is designed to seal out drafts, wind and water
- Variety of Low-E4® glass options are available to help control heating and cooling costs in any climate
- Many 400 Series casement windows have options that make them ENERGY STAR® v. 6.0 certified throughout the U.S.



BEAUTIFUL

- Seven exterior color options
- Natural pine, white, dark bronze or black* interiors
- Extensive hardware selection
- Add style with grilles, exterior trim, art glass or patterned glass

EXTERIOR COLORS

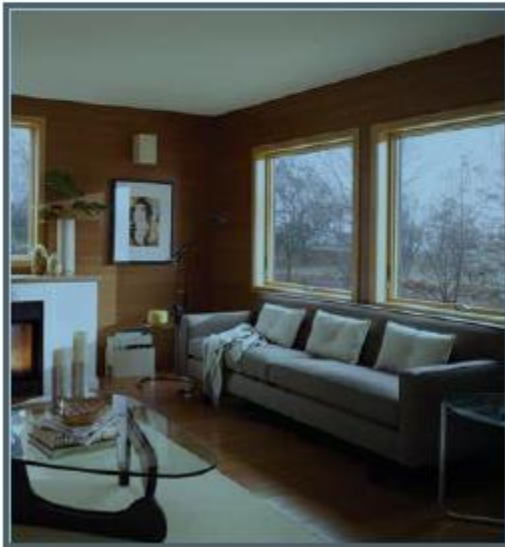


*Dark Bronze and Black Interiors are only available with Dark Bronze and Black exteriors respectively. See your Andersen dealer for availability. **Visit andersenwindows.com/warranty for details. ENERGY STAR is a registered trademark of the U.S. Environmental Protection Agency.

Shore Point Architecture, PA
 108 South Main Street Ocean Grove, NJ 07756
 P: 732.774.6900 F: 732.774.7250



400 SERIES



AWNING WINDOWS

Built on the same platform as our legendary casement window, 400 Series awning windows deliver the same performance and beauty. Their solid wood frames and sash provide strength, while the vinyl covering and weather-tight construction keep the window and your home protected from the elements. On the inside you have the choice of natural pine or a low-maintenance white, dark bronze or black* finish. For added style there is a wide range of grille, hardware and art glass options.

DURABLE

- Virtually maintenance-free
- Perma-Shield® exteriors never need painting and won't peel, blister, flake or corrode**
- Frame exterior is protected by a tough vinyl cover that resists dents and repels water and provides long-lasting protection
- Available with Stormwatch® protection for coastal areas

ENERGY EFFICIENT

- Weather-resistant construction for greater comfort and energy efficiency
- Weatherstripping is designed to seal out drafts, wind and water
- Variety of Low-E4® glass options are available to help control heating and cooling costs in any climate
- Many 400 Series awning windows have options that makes them ENERGY STAR® v. 6.0 certified throughout the U.S.



BEAUTIFUL

- Seven exterior color options
- Natural pine, white, dark bronze or black* interiors
- Extensive hardware selection
- Add style with grilles, exterior trim, art glass or patterned glass

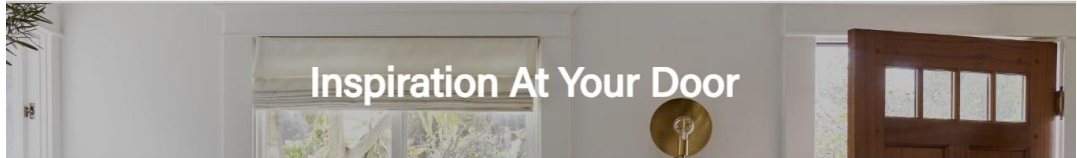
EXTERIOR COLORS



*Dark Bronze and Black interiors are only available with Dark Bronze and Black exteriors respectively. See your Andersen dealer for availability. **Visit andersenwindows.com/warranty for details. ENERGY STAR® is a registered trademark of the U.S. Environmental Protection Agency.


Shore Point Architecture, PA
 108 South Main Street Ocean Grove, NJ 07756
 P: 732.774.6900 F: 732.774.7250

Simpson Wood Door and Side Lites - Sherwin Williams Rookwood Red (SW 2802)



Inspiration At Your Door

< BACK



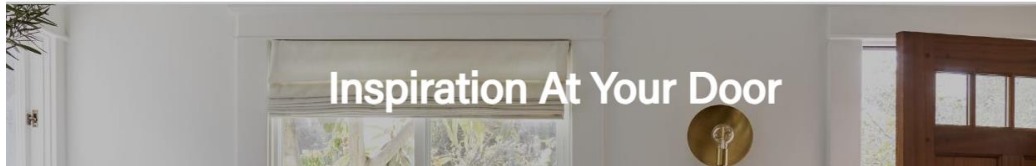
7501 THERMAL SASH

The door you have selected is available with almost unlimited personalization options. For example, you can order this door in any type of wood and any size and change virtually any detail. To make this door even more "you," Personalize Your Door below.

DOOR SPECIFICATIONS (AS SHOWN):


Wood Species: Fir
Glass: Clear
Profile: Ovolo Sticking
Panel Type: 1-7/16" Innerbond DHRP

Rough opening needs to be 2" wider and 2 1/2" taller than your door.



Inspiration At Your Door

< BACK



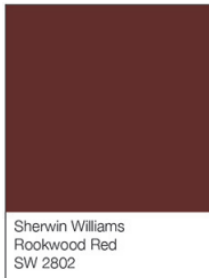
7801 THERMAL SASH SIDELIGHT

The door you have selected is available with almost unlimited personalization options. For example, you can order this door in any type of wood and any size and change virtually any detail. To make this door even more "you," Personalize Your Door below.

DOOR SPECIFICATIONS (AS SHOWN):

Wood Species: Fir
Glass: Clear
Profile: Ovolo Sticking
Panel Type: 1-7/16" Innerbond DHRP

Rough opening needs to be 2" wider and 2 1/2" taller than your door.



Shore Point Architecture, PA
108 South Main Street Ocean Grove, NJ 07756
P: 732.774.6900 F: 732.774.7250

Thermatru Clear, Half Glass Door

Smooth-Star®

Style No. S6021 | Half Lite 1 Panel | Glass Name: Clear 1 Lite No Grid

★★★★☆ 3.2 (17) [Write a review](#)

- Overview
- Features & Literature
- Reviews & Questions
- Where to Buy
- Design Your Door



PAINT OPTIONS



AVAILABLE SIZES



LITERATURE

- [Full-Line Catalog](#)
- [Door System Brochure](#)

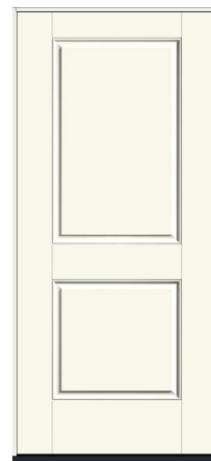
Thermatru Door

Smooth-Star®

Style No. S220 | 2 Panel Square Top | Glass Name: No Glass

★★★★☆ 3.2 (17) [Write a review](#)

- Overview
- Features & Literature
- Reviews & Questions
- Where to Buy
- Design Your Door



PAINT OPTIONS



AVAILABLE SIZES



LITERATURE

- [Full-Line Catalog](#)
- [Door System Brochure](#)

Shore Point Architecture, PA
108 South Main Street Ocean Grove, NJ 07756
P: 732.774.6900 F: 732.774.7250

Aeratis Decking – Weathered Wood

Aeratis Heritage



Aeratis Heritage is a true double-sided tongue and groove porch plank that comes in three pre-finished colors, Battleship Gray, Weathered Wood and Vintage Slate. These colored boards are made with slight color variation along with subtle, random streaking to match the richness and depth of natural wood. Heritage, like all the other Aeratis products, can be painted or stained any color, any time in the future, by following the steps within the Traditions paint instructions.

The Heritage line of products are ADA slip compliant and carry a Class “B” fire rating (more flame resistant than any other competitors’ product). This double-sided board offers a finished ceiling look from the underside of a porch floor that is visible from underneath.

Aeratis Heritage T&G porch flooring board dimensions are 3-1/8” x 7/8” and are available in 12’, 16’ and 20’ lengths. As seen above from left to right: Battleship Gray, Weathered Wood and Vintage Slate. The Aeratis products have the appearance of wood and natural color variation.

Aeratis Heritage T&G Porch Flooring Dimensions



Lengths: 12’, 16’, or 20’
 Width: 3-1/8” (3.092)
 Thickness: 7/8”



Aeratis Battleship Gray, Weathered Wood and Vintage Slate

Beadboard Ceiling – Manufacturer’s Blue

VERSATEX BUILDING PRODUCTS THE VERSATEX WAY DISCOVER PRODUCTS RESOURCES COMPANY FOR PROS

T&G PROFILES

VERSATEX Tongue-and-Groove & Beadboard Profiles: Get Your Groove On.

VERSATEX is the industry leader in tongue-and-groove profiles in the industry. We now give you more options than EVER before. Our new beadboard and beaded profiles feature a grooved top and a flat bottom. As well as many of our profiles, VERSATEX has options for you: design and installation flexibility.

- We have beadboard profiles in 1/2" x 1/2", 1/2" x 3/4", 1/2" x 1", 1/2" x 1 1/4", 1/2" x 1 1/2", 1/2" x 2", 1/2" x 2 1/2", 1/2" x 3", 1/2" x 3 1/2", 1/2" x 4", 1/2" x 4 1/2", 1/2" x 5", 1/2" x 5 1/2", 1/2" x 6", 1/2" x 6 1/2", 1/2" x 7", 1/2" x 7 1/2", 1/2" x 8", 1/2" x 8 1/2", 1/2" x 9", 1/2" x 9 1/2", 1/2" x 10", 1/2" x 10 1/2", 1/2" x 11", 1/2" x 11 1/2", 1/2" x 12", 1/2" x 12 1/2", 1/2" x 13", 1/2" x 13 1/2", 1/2" x 14", 1/2" x 14 1/2", 1/2" x 15", 1/2" x 15 1/2", 1/2" x 16", 1/2" x 16 1/2", 1/2" x 17", 1/2" x 17 1/2", 1/2" x 18", 1/2" x 18 1/2", 1/2" x 19", 1/2" x 19 1/2", 1/2" x 20", 1/2" x 20 1/2", 1/2" x 21", 1/2" x 21 1/2", 1/2" x 22", 1/2" x 22 1/2, 1/2" x 23", 1/2" x 23 1/2, 1/2" x 24", 1/2" x 24 1/2, 1/2" x 25", 1/2" x 25 1/2, 1/2" x 26", 1/2" x 26 1/2, 1/2" x 27", 1/2" x 27 1/2, 1/2" x 28", 1/2" x 28 1/2, 1/2" x 29", 1/2" x 29 1/2, 1/2" x 30", 1/2" x 30 1/2, 1/2" x 31", 1/2" x 31 1/2, 1/2" x 32", 1/2" x 32 1/2, 1/2" x 33", 1/2" x 33 1/2, 1/2" x 34", 1/2" x 34 1/2, 1/2" x 35", 1/2" x 35 1/2, 1/2" x 36", 1/2" x 36 1/2, 1/2" x 37", 1/2" x 37 1/2, 1/2" x 38", 1/2" x 38 1/2, 1/2" x 39", 1/2" x 39 1/2, 1/2" x 40", 1/2" x 40 1/2, 1/2" x 41", 1/2" x 41 1/2, 1/2" x 42", 1/2" x 42 1/2, 1/2" x 43", 1/2" x 43 1/2, 1/2" x 44", 1/2" x 44 1/2, 1/2" x 45", 1/2" x 45 1/2, 1/2" x 46", 1/2" x 46 1/2, 1/2" x 47", 1/2" x 47 1/2, 1/2" x 48", 1/2" x 48 1/2, 1/2" x 49", 1/2" x 49 1/2, 1/2" x 50", 1/2" x 50 1/2, 1/2" x 51", 1/2" x 51 1/2, 1/2" x 52", 1/2" x 52 1/2, 1/2" x 53", 1/2" x 53 1/2, 1/2" x 54", 1/2" x 54 1/2, 1/2" x 55", 1/2" x 55 1/2, 1/2" x 56", 1/2" x 56 1/2, 1/2" x 57", 1/2" x 57 1/2, 1/2" x 58", 1/2" x 58 1/2, 1/2" x 59", 1/2" x 59 1/2, 1/2" x 60", 1/2" x 60 1/2, 1/2" x 61", 1/2" x 61 1/2, 1/2" x 62", 1/2" x 62 1/2, 1/2" x 63", 1/2" x 63 1/2, 1/2" x 64", 1/2" x 64 1/2, 1/2" x 65", 1/2" x 65 1/2, 1/2" x 66", 1/2" x 66 1/2, 1/2" x 67", 1/2" x 67 1/2, 1/2" x 68", 1/2" x 68 1/2, 1/2" x 69", 1/2" x 69 1/2, 1/2" x 70", 1/2" x 70 1/2, 1/2" x 71", 1/2" x 71 1/2, 1/2" x 72", 1/2" x 72 1/2, 1/2" x 73", 1/2" x 73 1/2, 1/2" x 74", 1/2" x 74 1/2, 1/2" x 75", 1/2" x 75 1/2, 1/2" x 76", 1/2" x 76 1/2, 1/2" x 77", 1/2" x 77 1/2, 1/2" x 78", 1/2" x 78 1/2, 1/2" x 79", 1/2" x 79 1/2, 1/2" x 80", 1/2" x 80 1/2, 1/2" x 81", 1/2" x 81 1/2, 1/2" x 82", 1/2" x 82 1/2, 1/2" x 83", 1/2" x 83 1/2, 1/2" x 84", 1/2" x 84 1/2, 1/2" x 85", 1/2" x 85 1/2, 1/2" x 86", 1/2" x 86 1/2, 1/2" x 87", 1/2" x 87 1/2, 1/2" x 88", 1/2" x 88 1/2, 1/2" x 89", 1/2" x 89 1/2, 1/2" x 90", 1/2" x 90 1/2, 1/2" x 91", 1/2" x 91 1/2, 1/2" x 92", 1/2" x 92 1/2, 1/2" x 93", 1/2" x 93 1/2, 1/2" x 94", 1/2" x 94 1/2, 1/2" x 95", 1/2" x 95 1/2, 1/2" x 96", 1/2" x 96 1/2, 1/2" x 97", 1/2" x 97 1/2, 1/2" x 98", 1/2" x 98 1/2, 1/2" x 99", 1/2" x 99 1/2, 1/2" x 100", 1/2" x 100 1/2, 1/2" x 101", 1/2" x 101 1/2, 1/2" x 102", 1/2" x 102 1/2, 1/2" x 103", 1/2" x 103 1/2, 1/2" x 104", 1/2" x 104 1/2, 1/2" x 105", 1/2" x 105 1/2, 1/2" x 106", 1/2" x 106 1/2, 1/2" x 107", 1/2" x 107 1/2, 1/2" x 108", 1/2" x 108 1/2, 1/2" x 109", 1/2" x 109 1/2, 1/2" x 110", 1/2" x 110 1/2, 1/2" x 111", 1/2" x 111 1/2, 1/2" x 112", 1/2" x 112 1/2, 1/2" x 113", 1/2" x 113 1/2, 1/2" x 114", 1/2" x 114 1/2, 1/2" x 115", 1/2" x 115 1/2, 1/2" x 116", 1/2" x 116 1/2, 1/2" x 117", 1/2" x 117 1/2, 1/2" x 118", 1/2" x 118 1/2, 1/2" x 119", 1/2" x 119 1/2, 1/2" x 120", 1/2" x 120 1/2, 1/2" x 121", 1/2" x 121 1/2, 1/2" x 122", 1/2" x 122 1/2, 1/2" x 123", 1/2" x 123 1/2, 1/2" x 124", 1/2" x 124 1/2, 1/2" x 125", 1/2" x 125 1/2, 1/2" x 126", 1/2" x 126 1/2, 1/2" x 127", 1/2" x 127 1/2, 1/2" x 128", 1/2" x 128 1/2, 1/2" x 129", 1/2" x 129 1/2, 1/2" x 130", 1/2" x 130 1/2, 1/2" x 131", 1/2" x 131 1/2, 1/2" x 132", 1/2" x 132 1/2, 1/2" x 133", 1/2" x 133 1/2, 1/2" x 134", 1/2" x 134 1/2, 1/2" x 135", 1/2" x 135 1/2, 1/2" x 136", 1/2" x 136 1/2, 1/2" x 137", 1/2" x 137 1/2, 1/2" x 138", 1/2" x 138 1/2, 1/2" x 139", 1/2" x 139 1/2, 1/2" x 140", 1/2" x 140 1/2, 1/2" x 141", 1/2" x 141 1/2, 1/2" x 142", 1/2" x 142 1/2, 1/2" x 143", 1/2" x 143 1/2, 1/2" x 144", 1/2" x 144 1/2, 1/2" x 145", 1/2" x 145 1/2, 1/2" x 146", 1/2" x 146 1/2, 1/2" x 147", 1/2" x 147 1/2, 1/2" x 148", 1/2" x 148 1/2, 1/2" x 149", 1/2" x 149 1/2, 1/2" x 150", 1/2" x 150 1/2, 1/2" x 151", 1/2" x 151 1/2, 1/2" x 152", 1/2" x 152 1/2, 1/2" x 153", 1/2" x 153 1/2, 1/2" x 154", 1/2" x 154 1/2, 1/2" x 155", 1/2" x 155 1/2, 1/2" x 156", 1/2" x 156 1/2, 1/2" x 157", 1/2" x 157 1/2, 1/2" x 158", 1/2" x 158 1/2, 1/2" x 159", 1/2" x 159 1/2, 1/2" x 160", 1/2" x 160 1/2, 1/2" x 161", 1/2" x 161 1/2, 1/2" x 162", 1/2" x 162 1/2, 1/2" x 163", 1/2" x 163 1/2, 1/2" x 164", 1/2" x 164 1/2, 1/2" x 165", 1/2" x 165 1/2, 1/2" x 166", 1/2" x 166 1/2, 1/2" x 167", 1/2" x 167 1/2, 1/2" x 168", 1/2" x 168 1/2, 1/2" x 169", 1/2" x 169 1/2, 1/2" x 170", 1/2" x 170 1/2, 1/2" x 171", 1/2" x 171 1/2, 1/2" x 172", 1/2" x 172 1/2, 1/2" x 173", 1/2" x 173 1/2, 1/2" x 174", 1/2" x 174 1/2, 1/2" x 175", 1/2" x 175 1/2, 1/2" x 176", 1/2" x 176 1/2, 1/2" x 177", 1/2" x 177 1/2, 1/2" x 178", 1/2" x 178 1/2, 1/2" x 179", 1/2" x 179 1/2, 1/2" x 180", 1/2" x 180 1/2, 1/2" x 181", 1/2" x 181 1/2, 1/2" x 182", 1/2" x 182 1/2, 1/2" x 183", 1/2" x 183 1/2, 1/2" x 184", 1/2" x 184 1/2, 1/2" x 185", 1/2" x 185 1/2, 1/2" x 186", 1/2" x 186 1/2, 1/2" x 187", 1/2" x 187 1/2, 1/2" x 188", 1/2" x 188 1/2, 1/2" x 189", 1/2" x 189 1/2, 1/2" x 190", 1/2" x 190 1/2, 1/2" x 191", 1/2" x 191 1/2, 1/2" x 192", 1/2" x 192 1/2, 1/2" x 193", 1/2" x 193 1/2, 1/2" x 194", 1/2" x 194 1/2, 1/2" x 195", 1/2" x 195 1/2, 1/2" x 196", 1/2" x 196 1/2, 1/2" x 197", 1/2" x 197 1/2, 1/2" x 198", 1/2" x 198 1/2, 1/2" x 199", 1/2" x 199 1/2, 1/2" x 200", 1/2" x 200 1/2, 1/2" x 201", 1/2" x 201 1/2, 1/2" x 202", 1/2" x 202 1/2, 1/2" x 203", 1/2" x 203 1/2, 1/2" x 204", 1/2" x 204 1/2, 1/2" x 205", 1/2" x 205 1/2, 1/2" x 206", 1/2" x 206 1/2, 1/2" x 207", 1/2" x 207 1/2, 1/2" x 208", 1/2" x 208 1/2, 1/2" x 209", 1/2" x 209 1/2, 1/2" x 210", 1/2" x 210 1/2, 1/2" x 211", 1/2" x 211 1/2, 1/2" x 212", 1/2" x 212 1/2, 1/2" x 213", 1/2" x 213 1/2, 1/2" x 214", 1/2" x 214 1/2, 1/2" x 215", 1/2" x 215 1/2, 1/2" x 216", 1/2" x 216 1/2, 1/2" x 217", 1/2" x 217 1/2, 1/2" x 218", 1/2" x 218 1/2, 1/2" x 219", 1/2" x 219 1/2, 1/2" x 220", 1/2" x 220 1/2, 1/2" x 221", 1/2" x 221 1/2, 1/2" x 222", 1/2" x 222 1/2, 1/2" x 223", 1/2" x 223 1/2, 1/2" x 224", 1/2" x 224 1/2, 1/2" x 225", 1/2" x 225 1/2, 1/2" x 226", 1/2" x 226 1/2, 1/2" x 227", 1/2" x 227 1/2, 1/2" x 228", 1/2" x 228 1/2, 1/2" x 229", 1/2" x 229 1/2, 1/2" x 230", 1/2" x 230 1/2, 1/2" x 231", 1/2" x 231 1/2, 1/2" x 232", 1/2" x 232 1/2, 1/2" x 233", 1/2" x 233 1/2, 1/2" x 234", 1/2" x 234 1/2, 1/2" x 235", 1/2" x 235 1/2, 1/2" x 236", 1/2" x 236 1/2, 1/2" x 237", 1/2" x 237 1/2, 1/2" x 238", 1/2" x 238 1/2, 1/2" x 239", 1/2" x 239 1/2, 1/2" x 240", 1/2" x 240 1/2, 1/2" x 241", 1/2" x 241 1/2, 1/2" x 242", 1/2" x 242 1/2, 1/2" x 243", 1/2" x 243 1/2, 1/2" x 244", 1/2" x 244 1/2, 1/2" x 245", 1/2" x 245 1/2, 1/2" x 246", 1/2" x 246 1/2, 1/2" x 247", 1/2" x 247 1/2, 1/2" x 248", 1/2" x 248 1/2, 1/2" x 249", 1/2" x 249 1/2, 1/2" x 250", 1/2" x 250 1/2, 1/2" x 251", 1/2" x 251 1/2, 1/2" x 252", 1/2" x 252 1/2, 1/2" x 253", 1/2" x 253 1/2, 1/2" x 254", 1/2" x 254 1/2, 1/2" x 255", 1/2" x 255 1/2, 1/2" x 256", 1/2" x 256 1/2, 1/2" x 257", 1/2" x 257 1/2, 1/2" x 258", 1/2" x 258 1/2, 1/2" x 259", 1/2" x 259 1/2, 1/2" x 260", 1/2" x 260 1/2, 1/2" x 261", 1/2" x 261 1/2, 1/2" x 262", 1/2" x 262 1/2, 1/2" x 263", 1/2" x 263 1/2, 1/2" x 264", 1/2" x 264 1/2, 1/2" x 265", 1/2" x 265 1/2, 1/2" x 266", 1/2" x 266 1/2, 1/2" x 267", 1/2" x 267 1/2, 1/2" x 268", 1/2" x 268 1/2, 1/2" x 269", 1/2" x 269 1/2, 1/2" x 270", 1/2" x 270 1/2, 1/2" x 271", 1/2" x 271 1/2, 1/2" x 272", 1/2" x 272 1/2, 1/2" x 273", 1/2" x 273 1/2, 1/2" x 274", 1/2" x 274 1/2, 1/2" x 275", 1/2" x 275 1/2, 1/2" x 276", 1/2" x 276 1/2, 1/2" x 277", 1/2" x 277 1/2, 1/2" x 278", 1/2" x 278 1/2, 1/2" x 279", 1/2" x 279 1/2, 1/2" x 280", 1/2" x 280 1/2, 1/2" x 281", 1/2" x 281 1/2, 1/2" x 282", 1/2" x 282 1/2, 1/2" x 283", 1/2" x 283 1/2, 1/2" x 284", 1/2" x 284 1/2, 1/2" x 285", 1/2" x 285 1/2, 1/2" x 286", 1/2" x 286 1/2, 1/2" x 287", 1/2" x 287 1/2, 1/2" x 288", 1/2" x 288 1/2, 1/2" x 289", 1/2" x 289 1/2, 1/2" x 290", 1/2" x 290 1/2, 1/2" x 291", 1/2" x 291 1/2, 1/2" x 292", 1/2" x 292 1/2, 1/2" x 293", 1/2" x 293 1/2, 1/2" x 294", 1/2" x 294 1/2, 1/2" x 295", 1/2" x 295 1/2, 1/2" x 296", 1/2" x 296 1/2, 1/2" x 297", 1/2" x 297 1/2, 1/2" x 298", 1/2" x 298 1/2, 1/2" x 299", 1/2" x 299 1/2, 1/2" x 300", 1/2" x 300 1/2, 1/2" x 301", 1/2" x 301 1/2, 1/2" x 302", 1/2" x 302 1/2, 1/2" x 303", 1/2" x 303 1/2, 1/2" x 304", 1/2" x 304 1/2, 1/2" x 305", 1/2" x 305 1/2, 1/2" x 306", 1/2" x 306 1/2, 1/2" x 307", 1/2" x 307 1/2, 1/2" x 308", 1/2" x 308 1/2, 1/2" x 309", 1/2" x 309 1/2, 1/2" x 310", 1/2" x 310 1/2, 1/2" x 311", 1/2" x 311 1/2, 1/2" x 312", 1/2" x 312 1/2, 1/2" x 313", 1/2" x 313 1/2, 1/2" x 314", 1/2" x 314 1/2, 1/2" x 315", 1/2" x 315 1/2, 1/2" x 316", 1/2" x 316 1/2, 1/2" x 317", 1/2" x 317 1/2, 1/2" x 318", 1/2" x 318 1/2, 1/2" x 319", 1/2" x 319 1/2, 1/2" x 320", 1/2" x 320 1/2, 1/2" x 321", 1/2" x 321 1/2, 1/2" x 322", 1/2" x 322 1/2, 1/2" x 323", 1/2" x 323 1/2, 1/2" x 324", 1/2" x 324 1/2, 1/2" x 325", 1/2" x 325 1/2, 1/2" x 326", 1/2" x 326 1/2, 1/2" x 327", 1/2" x 327 1/2, 1/2" x 328", 1/2" x 328 1/2, 1/2" x 329", 1/2" x 329 1/2, 1/2" x 330", 1/2" x 330 1/2, 1/2" x 331", 1/2" x 331 1/2, 1/2" x 332", 1/2" x 332 1/2, 1/2" x 333", 1/2" x 333 1/2, 1/2" x 334", 1/2" x 334 1/2, 1/2" x 335", 1/2" x 335 1/2, 1/2" x 336", 1/2" x 336 1/2, 1/2" x 337", 1/2" x 337 1/2, 1/2" x 338", 1/2" x 338 1/2, 1/2" x 339", 1/2" x 339 1/2, 1/2" x 340", 1/2" x 340 1/2, 1/2" x 341", 1/2" x 341 1/2, 1/2" x 342", 1/2" x 342 1/2, 1/2" x 343", 1/2" x 343 1/2, 1/2" x 344", 1/2" x 344 1/2, 1/2" x 345", 1/2" x 345 1/2, 1/2" x 346", 1/2" x 346 1/2, 1/2" x 347", 1/2" x 347 1/2, 1/2" x 348", 1/2" x 348 1/2, 1/2" x 349", 1/2" x 349 1/2, 1/2" x 350", 1/2" x 350 1/2, 1/2" x 351", 1/2" x 351 1/2, 1/2" x 352, 1/2" x 352 1/2, 1/2" x 353, 1/2" x 353 1/2, 1/2" x 354, 1/2" x 354 1/2, 1/2" x 355, 1/2" x 355 1/2, 1/2" x 356, 1/2" x 356 1/2, 1/2" x 357, 1/2" x 357 1/2, 1/2" x 358, 1/2" x 358 1/2, 1/2" x 359, 1/2" x 359 1/2, 1/2" x 360, 1/2" x 360 1/2, 1/2" x 361, 1/2" x 361 1/2, 1/2" x 362, 1/2" x 362 1/2, 1/2" x 363, 1/2" x 363 1/2, 1/2" x 364, 1/2" x 364 1/2, 1/2" x 365, 1/2" x 365 1/2, 1/2" x 366, 1/2" x 366 1/2, 1/2" x 367, 1/2" x 367 1/2, 1/2" x 368, 1/2" x 368 1/2, 1/2" x 369, 1/2" x 369 1/2, 1/2" x 370, 1/2" x 370 1/2, 1/2" x 371, 1/2" x 371 1/2, 1/2" x 372, 1/2" x 372 1/2, 1/2" x 373, 1/2" x 373 1/2, 1/2" x 374, 1/2" x 374 1/2, 1/2" x 375, 1/2" x 375 1/2, 1/2" x 376, 1/2" x 376 1/2, 1/2" x 377, 1/2" x 377 1/2, 1/2" x 378, 1/2" x 378 1/2, 1/2" x 379, 1/2" x 379 1/2, 1/2" x 380, 1/2" x 380 1/2, 1/2" x 381, 1/2" x 381 1/2, 1/2" x 382, 1/2" x 382 1/2, 1/2" x 383, 1/2" x 383 1/2, 1/2" x 384, 1/2" x 384 1/2, 1/2" x 385, 1/2" x 385 1/2, 1/2" x 386, 1/2" x 386 1/2, 1/2" x 387, 1/2" x 387 1/2, 1/2" x 388, 1/2" x 388 1/2, 1/2" x 389, 1/2" x 389 1/2, 1/2" x 390, 1/2" x 390 1/2, 1/2" x 391, 1/2" x 391 1/2, 1/2" x 392, 1/2" x 392 1/2, 1/2" x 393, 1/2" x 393 1/2, 1/2" x 394, 1/2" x 394 1/2, 1/2" x 395, 1/2" x 395 1/2, 1/2" x 396, 1/2" x 396 1/2, 1/2" x 397, 1/2" x 397 1/2, 1/2" x 398, 1/2" x 398 1/2, 1/2" x 399, 1/2" x 399 1/2, 1/2" x 400, 1/2" x 400 1/2, 1/2" x 401, 1/2" x 401 1/2, 1/2" x 402, 1/2" x 402 1/2, 1/2" x 403, 1/2" x 403 1/2, 1/2" x 404, 1/2" x 404 1/2, 1/2" x 405, 1/2" x 405 1/2, 1/2" x 406, 1/2" x 406 1/2, 1/2" x 407, 1/2" x 407 1/2, 1/2" x 408, 1/2" x 408 1/2, 1/2" x 409, 1/2" x 409 1/2, 1/2" x 410, 1/2" x 410 1/2, 1/2" x 411, 1/2" x 411 1/2, 1/2" x 412, 1/2" x 412 1/2, 1/2" x 413, 1/2" x 413 1/2, 1/2" x 414, 1/2" x 414 1/2, 1/2" x 415, 1/2" x 415 1/2, 1/2" x 416, 1/2" x 416 1/2, 1/2" x 417, 1/2" x 417 1/2, 1/2" x 418, 1/2" x 418 1/2, 1/2" x 419, 1/2" x 419 1/2, 1/2" x 420, 1/2" x 420 1/2, 1/2" x 421, 1/2" x 421 1/2, 1/2" x 422, 1/2" x 422 1/2, 1/2" x 423, 1/2" x 423 1/2, 1/2" x 424, 1/2" x 424 1/2, 1/2" x 425, 1/2" x 425 1/2, 1/2" x 426, 1/2" x 426 1/2, 1/2" x 427, 1/2" x 427 1/2, 1/2" x 428, 1/2" x 428 1/2, 1/2" x 429, 1/2" x 429 1/2, 1/2" x 430, 1/2" x 430 1/2, 1/2" x 431, 1/2" x 431 1/2, 1/2" x 432, 1/2" x 432 1/2, 1/2" x 433, 1/2" x 433 1/2, 1/2" x 434, 1/2" x 434 1/2, 1/2" x 435, 1/2" x 435 1/2, 1/2" x 436, 1/2" x 436 1/2, 1/2" x 437, 1/2" x 437 1/2, 1/2" x 438, 1/2"

Hardie Plank Clapboard, Smooth Finish, 5" Exposure – Sherwin Williams Bunglehouse Blue (SW 0048)

Siding Trim Soffit HardieWrap* Finishing Touches

● HardiePlank® Lap Siding
HardiePanel® Vertical Siding
HardieShingle® Siding

Sleek and strong, HardiePlank® lap siding is not just our best-selling product – it's the most popular brand of siding in America.

With a full spectrum of colors and textures, homeowners can enjoy protection from the elements and the versatility to make their dream home a reality. From Victorians to Colonials, HardiePlank lap siding sets the standard in exterior cladding.

A classic look for
THE HOME OF THEIR DREAMS.

JamesHardie
Siding | Trim
ABOUT JAMES HARDIE
PRODUCTS
COLOR

Siding Trim Soffit HardieWrap* Finishing Touches

● HardiePlank® Lap Siding
HardiePanel® Vertical Siding
HardieShingle® Siding

SMOOTH
Country/Plank Siding

Thickness: 5/16 in.

Length: 12 ft. planks

Width: 5.25 in. 6.25 in. 7.25 in. 8.25 in.

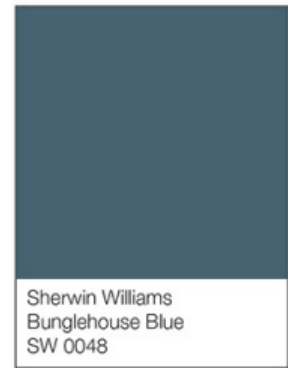
Exposure: 4 in. 5 in. 6 in. 7 in.

Color/Pks./Pallet	324	280	252	210
Prime Pcs./Pallet	360	308	252	230
Pcs./Sq.	25.0	20.0	16.7	14.3

Available Colors

[View all HardiePlank Lap Siding Products](#)

JamesHardie
Siding | Trim
ABOUT JAMES HARDIE
PRODUCTS
COLOR



Shore Point Architecture, PA
108 South Main Street Ocean Grove, NJ 07756
P: 732.774.6900 F: 732.774.7250

Dartmouth Extruded Rail

A Classic and Elegant Rail Profile with Modern Characteristics



Unique Dartmouth Rail Features

- Commercially Code Approved for 12' span
- 12' Spans Contain Heavy-Duty Aluminum
- Standard Kits Ship With Solid 1 1/2" Square-Edge Baluster

Rail Assembly Jig

Our reusable rail assembly jig is designed specifically to help reduce installation times and labor cost. The Assembly jig makes it easier to align, center and space balusters.

Longer, Code Compliant Spans

Meets commercial requirements of International Building Code (IBC) and International Residential Code (IRC) for level spans up to 12 feet and stair spans up to 8 feet.

Popular Upgrades for Dartmouth Rail:



Louver Infill



Horizontal Balusters



Radius Rail



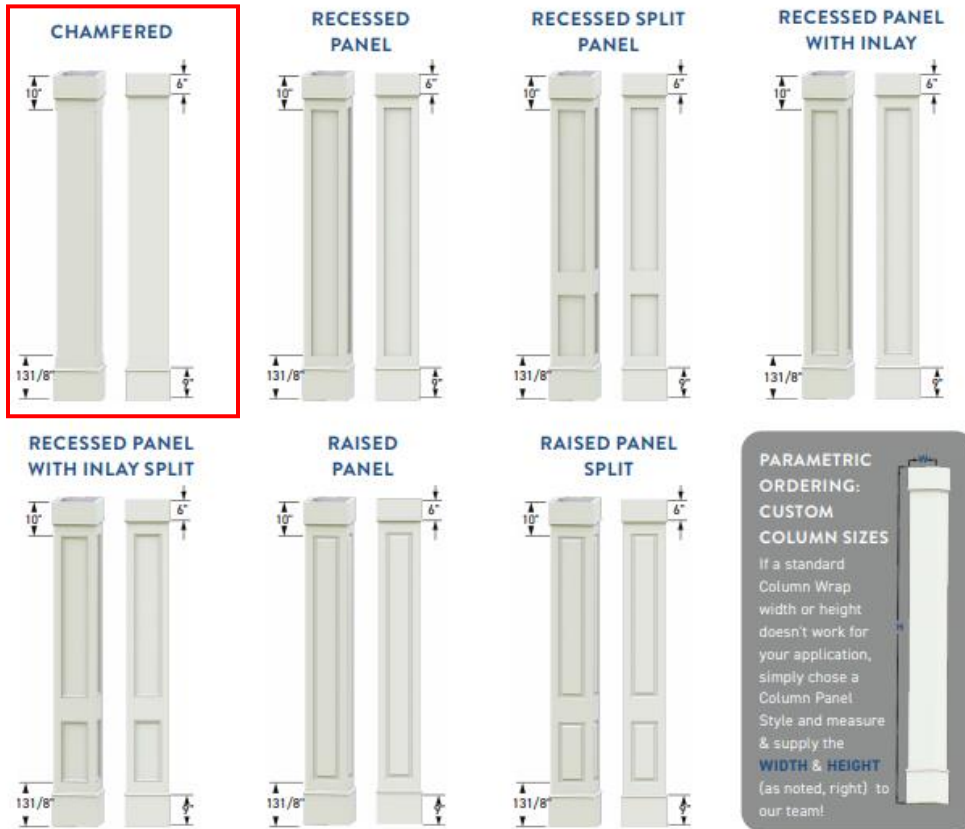
Glass Panels

Details For All Available Rail Upgrades Start On Page 18

Sherwin Williams
Harvester
SW 6373

Panel Styles COLUMN WRAPS

Column Wraps are shipped in two halves and ready to be incorporated with structural components – typically a Pressure Treated 4 x 4, 6 x 6, or 8 x 8 – for installation.



PARAMETRIC ORDERING: CUSTOM COLUMN SIZES
 If a standard Column Wrap width or height doesn't work for your application, simply chose a Column Panel Style and measure & supply the **WIDTH & HEIGHT** (as noted, right) to our team!

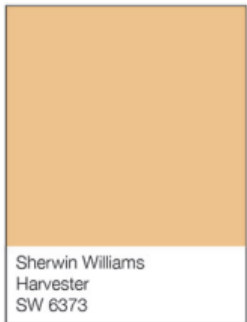
COLUMN WRAPS

- Standard widths: 8", 10", & 12"
- Standard heights: 8', 9', 10', & 12'
- Custom widths & heights also available

Column Size	Raised or Chamfered	Recessed or Recessed with Inlay
8"	6-3/4"	6" at Center, 6-3/4" at Top & Bottom
10"	8-3/4"	8" at Center, 8-3/4" at Top & Bottom
12"	10-3/4"	10" at Center, 10-3/4" at Top & Bottom

GET AN INSTANT QUOTE!
www.intexbyazek.com

	Chamfered	Recessed	Recessed with Inlay	Raised
Line, Corner, or End Configuration	X	✓	✓	✓



Shore Point Architecture, PA
 108 South Main Street Ocean Grove, NJ 07756
 P: 732.774.6900 F: 732.774.7250

Exterior Light

Chesapeake™ 1 Light Wall Light Black

9776BK

© 2021 Kichler Lighting LLC. All Rights Reserved.

SPECIFICATIONS

Certifications/Qualifications

www.kichler.com/warranty

Dimensions

Base Backplate	4.25 X 6.00
Extension	8.00"
Weight	1.95 LBS
Height from center of Wall opening (Spec Sheet)	3.25"
Height	12.00"
Width	6.50"

Light Source

Lamp Included	Not Included
Lamp Type	A19
Light Source	Incandescent
Max or Nominal Watt	100W
# of Bulbs/LED Modules	1
Socket Type	Medium
Socket Wire	105"

Mounting/Installation

Interior/Exterior	Exterior
Location Rating	Wet
Mounting Style	Wall Mount



FIXTURE ATTRIBUTES

Housing

Diffuser Description	Clear Beveled
Primary Material	Aluminum

Product/Ordering Information

SKU	9776BK
Finish	Black
Style	Traditional
UPC	783927001205

Finish Options

-  Black
-  Black
-  White

ALSO IN THIS FAMILY



49255BK



9774BKS



49255BKS



49256BKS



9776BKS



9774BK