

51 Webb Ave, Ocean Grove
Window Report

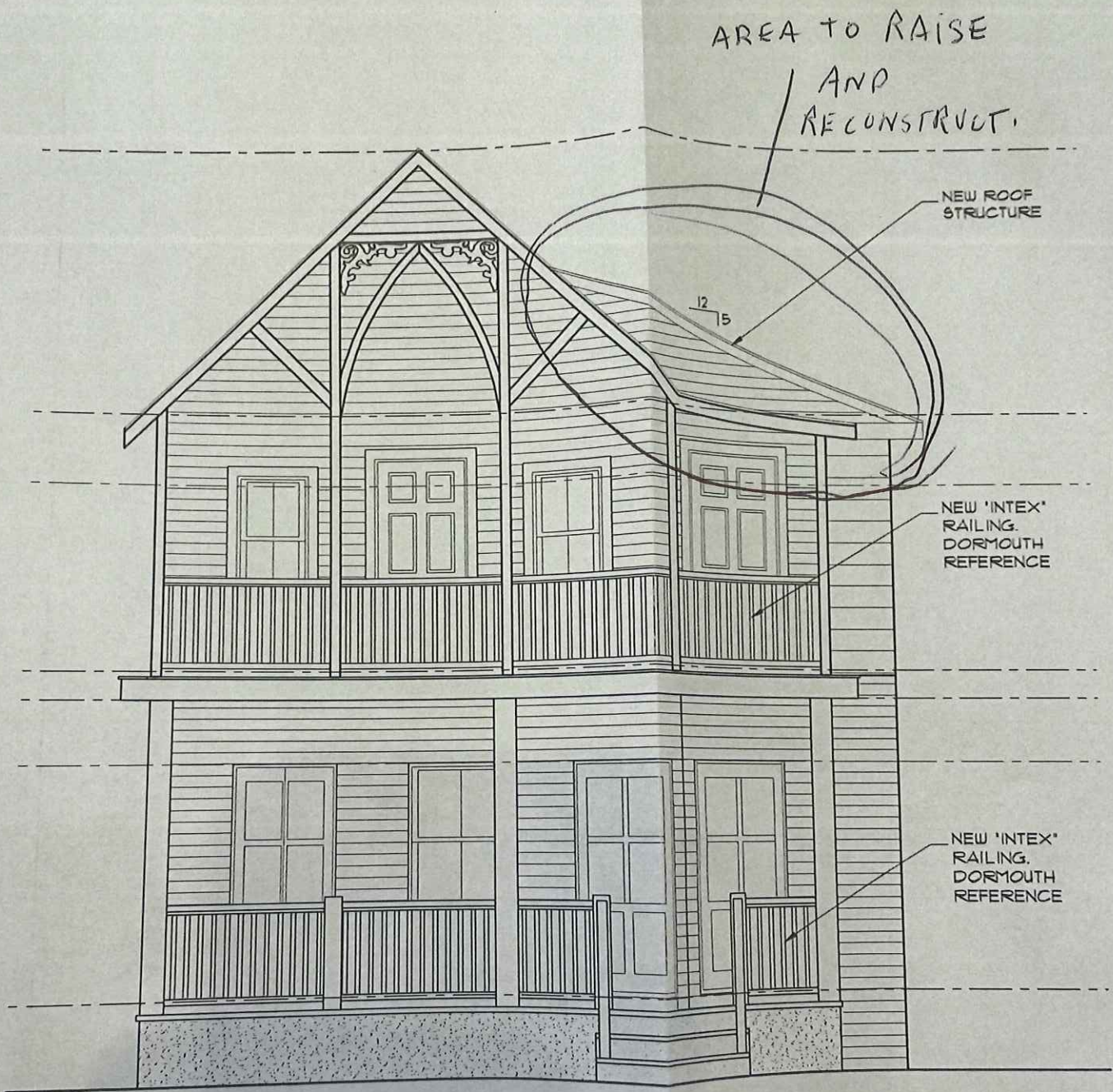
- Existing Conditions of Windows
 - Windows are a compilation of Replacement/ Non Original windows and Widows in poor/ non repairable condition.
- 17pc 2 over 2 Double hung window
 - Window 1,2&3 Front of the House(See Photo 1)
 - 1 over 1 double hung windows
 - Small than original window 25 3/4"X 47 1/2" existing window size were 30 1/2"X 51 1/2"
 - Different location from original(Looks to have been moved in previous renovation) (No Header above window) Window 3(See Photo 2)
 - Because of the lack of maitnence the windows are beyond repair.
 - Windows 8&9(See Photo 2)
 - Size 30 1/2"X 51 1/2"
 - Original windows Beyond Repair
 - These see to be the only original windows. These windows are larger and have a 2 over 2 window pattern
 - The Wood of the Existing windows is rotting and because of the lack of maintenance the windows are in poor condition beyond repair
 - Window 4,5&6(See Photo 3,4,5&6)
 - This area of the house was an addition and not original to the house.
 - The windows are smaller in size and in a condition beyond repair
 - Window 6 Is a Modern replacement window.(Wood rotten and beyond repair
 - Window 4&5 are older repurposed windows.(Framing was incorrect and installed with no headers or Jack Studs) This construction was because the addition framing was done incorrectly. Because of the height of the roof in this area there there was no room for the correct header. (Due to lack of maintenance windows are beyond repair)
 - Windows 11,12,13(Photo 7&8)
 - Window 11&12 are older windows that have been repurposed.(See Photo 7)
 - Same size and style window but the framing shows that they were relocated. Window 11 does not have a Header or proper jack studs. Window 12 Has a header and looks to be original, Both are in poor condition and beyond repair.
 - Window 13 seems to be and original widow with size and style. Condition is poor and beyond repair(See Photo 8)
 - Windows 7&10
 - These are newer Casement style windows that look to be installed during a previous renovation.(Window conditions are poor and beyond repair)
 - Windows 14,15,16,17
 - All windows are double hung NOT original windows. The rear or the house was added on.
 - All Windows are in Poor condition and beyond repair.

Over all Condition of windows are Poor and beyond repair. We propose to replace all windows with Anderson 400 Series windows Matching the size of the "Original" Windows.

First Floor -Windows 3,6,11,12,13,15 -(w)30 1/2" X (H)70"

Second Floor- Windows 1,2,4,5,9,8, (W)30 1/2" X (H)51 1/2"

Awning/ Casement - Windows 14,16,10,7- 30' X 30"



FRONT ELEVATION

SCALE: 1/4" = 1'-0"



WINDOW
1

NO SILL
FRAMING



PIECED IN
JACK STUDS

NO HEADER



WINDOW
2

PHOTO 1



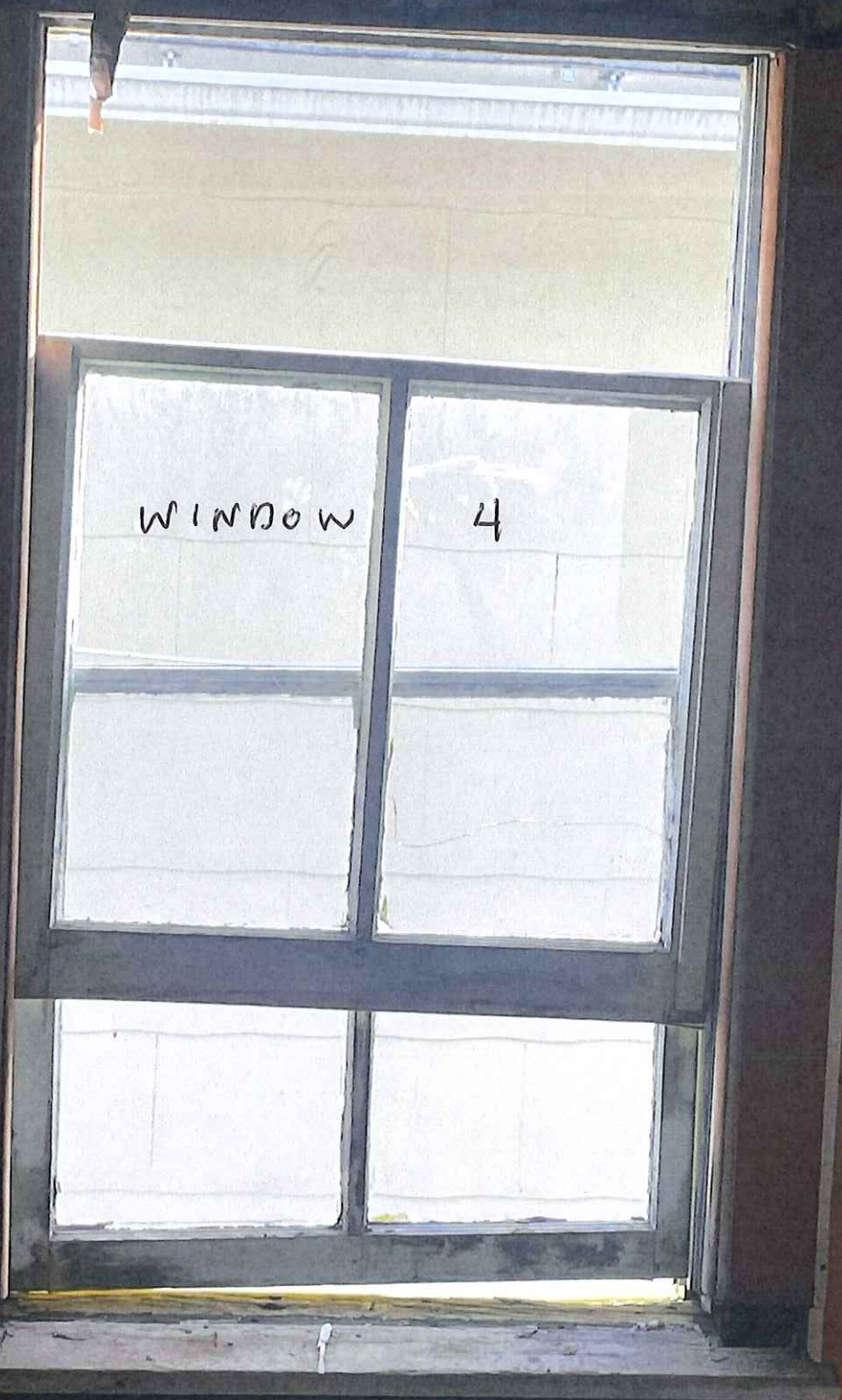
HEADER
UNDERSIZED

CONVENTIONAL
FRAMING

WINDOW 9

WINDOW 10

PHOTO 2



WINDOW 4

PHOTO 3



WINDOW

5

PHOTO 4

* REPLACEMENT
WINDOW.
70-80'S ERA.

WINDOW 6

PHOTO 5

PHOTO 9

WINDOW
14

WINDOW
16

↑
WINDOW 15

↑
WINDOW 17



WINDOW 6

* MODERN WINDOW

← COMPRESSION
WINDOW
COUNTER BALANCE

PHOTO 6

HEADER VS.
NO HEADER



WINDOW 12

WINDOW 11



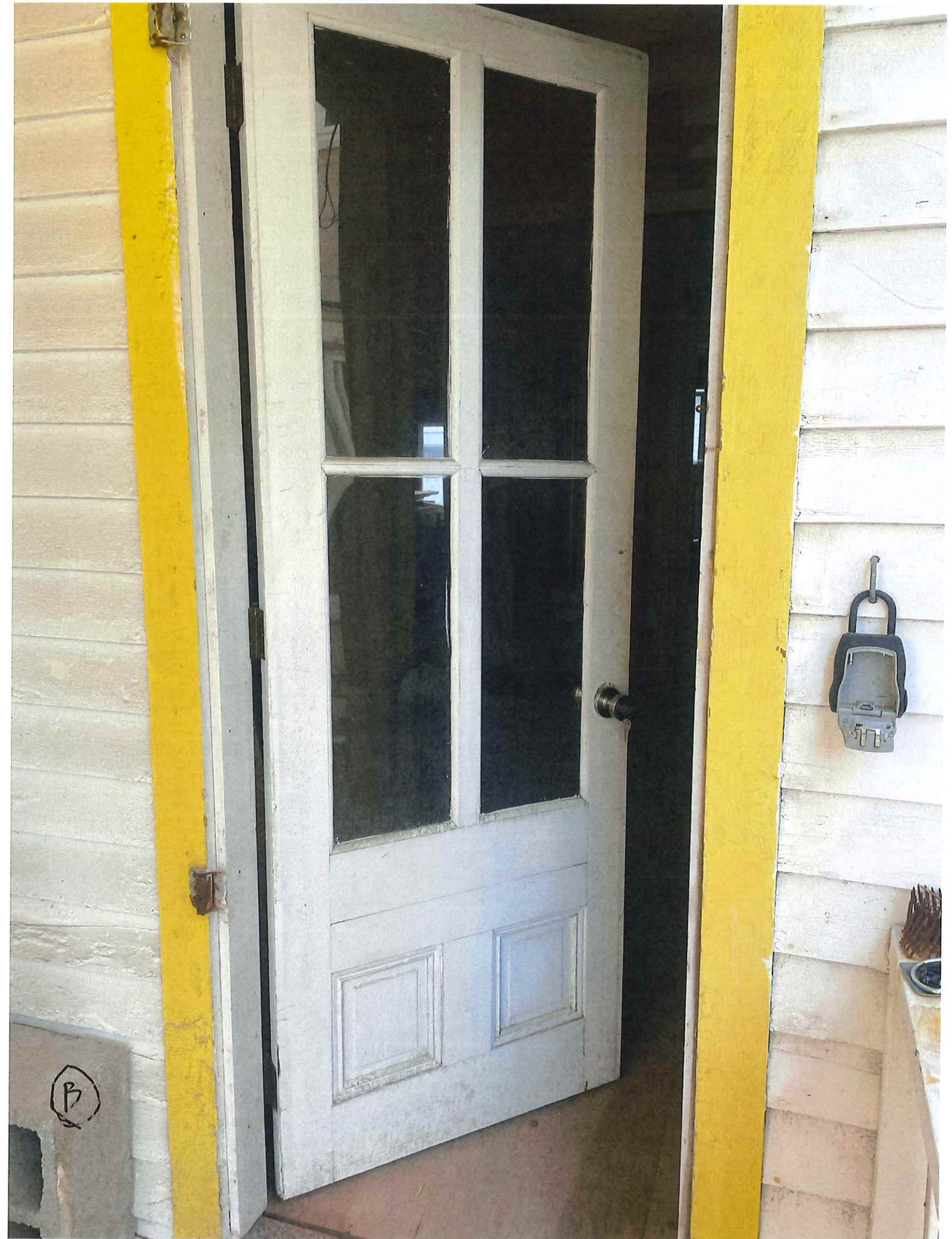
PHOTO 7



WINDOW

13

PHOTO 8



B



