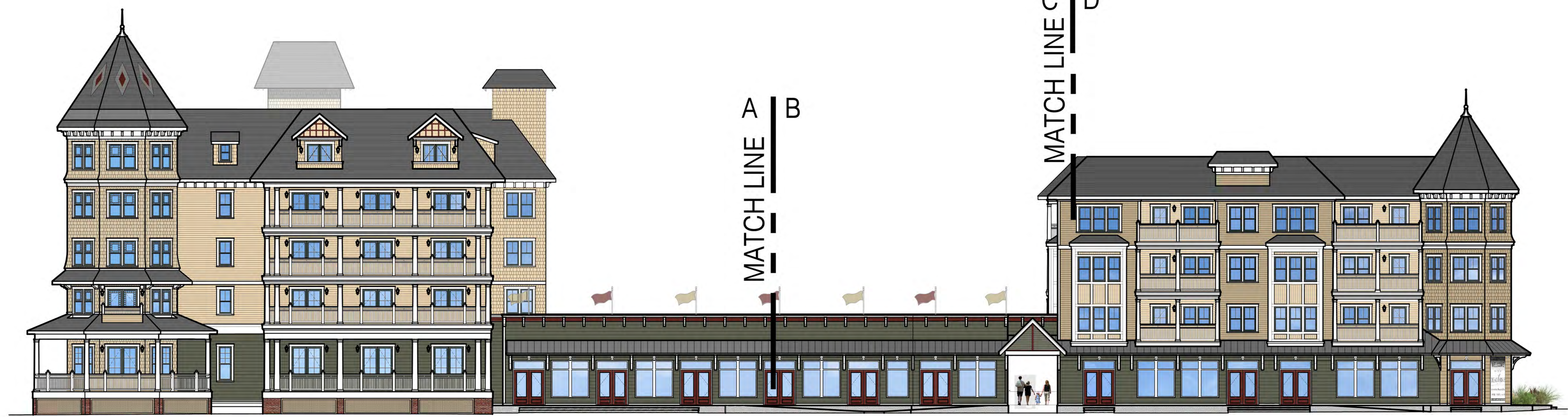




NOTE
 * (INDICATES ELEVATION ABOVE SEA LEVEL)
 (INDICATES ELEVATION ABOVE AVERAGE GRADE PLANE)

1A EAST ELEVATION-A
 1/8" = 1'-0"

1B EAST ELEVATION-B
 1/8" = 1'-0"



1 OVERALL EAST ELEVATION
 N.T.S.

REFER TO SHEET A-11 FOR
 HOTEL ELEVATIONS

	Cottage Red		Great Barrington Green Representing Heathered Moss Hardi Plank		Quincy Tan Representing Khaki Brown Hardi Plank		Dark Olive Representing Mountain Sage Hardi Plank		Philadelphia Cream
---	-------------	---	---	---	--	---	--	---	--------------------

PROPOSED NEW CONSTRUCTION FOR:
NORTH END REDEVELOPMENT
 (OCEAN GROVE) TOWNSHIP OF NEPTUNE, NJ
 BLOCK 101 LOT 2, 3 & 4

SEAL:

 Stephen J. Carledge, AIA
 NJ Lic. # A08089

SHORE POINT
ARCHITECTURE, PA
 108 South Main Street, Ocean Grove, New Jersey 07756
 P: 732.774.6900 F: 732.774.7250 www.shorepointarch.com

DRAWN: JC
 HOTEL ELEVATIONS
 SCALE: AS SHOWN

DATE	REVISION
3/7/2015	ISSUANCE
6/21/2018	REDESIGNMENT ENTRY REVISION
6/21/2018	PLANNING BOARD SUBMISSION
3/9/2020	HFC REVISIONS
3/24/2021	PER WDEP APPROVAL
4/22/2021	HFC REVISIONS
8/17/2021	HFC REVISIONS
1/28/2022	HFC REVISIONS

JOB NUMBER
 2018-23

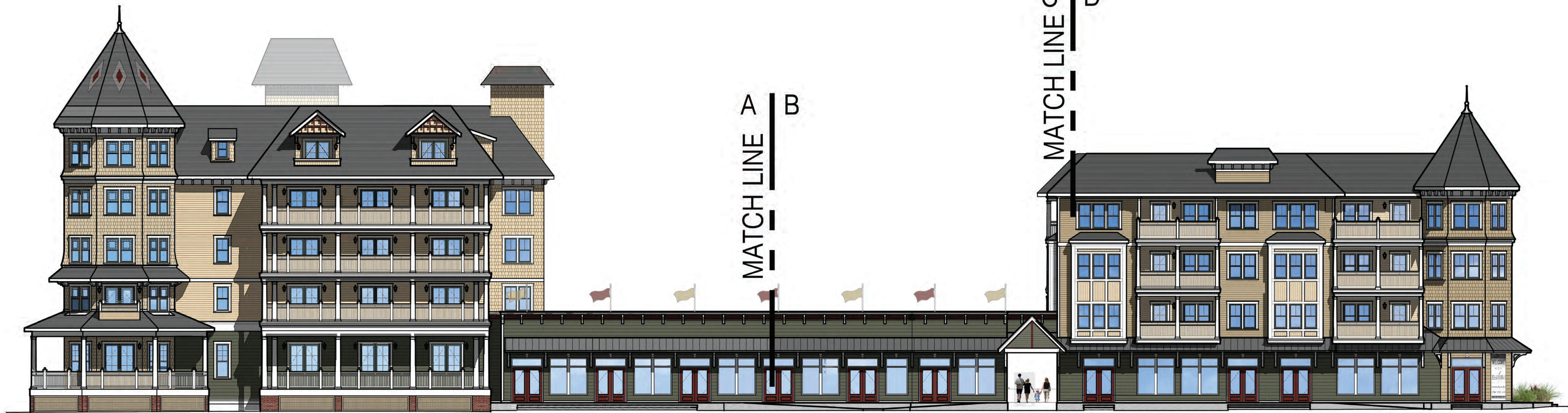
A-5
 NORTH END



NOTE
 * (INDICATES ELEVATION ABOVE SEA LEVEL)
 ** (INDICATES ELEVATION ABOVE AVERAGE GRADE PLANE)

1A EAST ELEVATION-A
 1/8" = 1'-0"

1B EAST ELEVATION-B
 1/8" = 1'-0"



1 OVERALL EAST ELEVATION
 N.T.S.

REFER TO SHEET A-11 FOR
 HOTEL ELEVATIONS



Cottage Red



Great Barrington Green Representing
 Heathered Moss Hardi Plank



Quincy Tan Representing
 Khaki Brown Hardi Plank



Dark Olive Representing
 Mountain Sage Hardi Plank



Philadelphia Cream

PROPOSED NEW CONSTRUCTION FOR:
NORTH END REDEVELOPMENT
 (OCEAN GROVE) TOWNSHIP OF NEPTUNE, NJ
 BLOCK 101 LOT 2, 3 & 4

SEAL:
Shore Point Architecture, PA
 State of California, USA
 NJ License Address

SHORE POINT
ARCHITECTURE, PA
 108 South Main Street, Ocean Grove, New Jersey 07756
 P: 732.774.6900 F: 732.774.7250 www.shorepointarch.com

SCALE: AS SHOWN
 HOTEL ELEVATIONS
 DRAWN: JC

DATE	REVISION
5/14/2019	REDEVELOPMENT ENTITY RESUBMISSION
6/21/2019	PLANNING BOARD SUBMISSION
7/24/2021	PER NJDEP APPROVAL
7/24/2021	HPC REVISIONS
8/9/2021	HPC REVISIONS
10/27/2021	HPC REVISIONS
1/28/2022	HPC REVISIONS

JOB NUMBER
 2018-23

A-5
 NORTH END



DECK LEVEL (MANSARD ROOF) (57.28) (59.86)
 PLATE HT.
 4TH FLR (47.28) (29.86)
 PLATE HT.
 3RD FLR (37.28) (19.86)
 PLATE HT.
 2ND FLR (27.28) (9.86)
 PLATE HT.
 AVERAGE GRADE PLANE (17.42)
 1ST FLR CONDO (17.28)

NOTE
 (INDICATES ELEVATION ABOVE SEA LEVEL)
 (INDICATES ELEVATION ABOVE AVERAGE GRADE PLANE)

① NORTH ELEVATION
 1/8" = 1'-0"

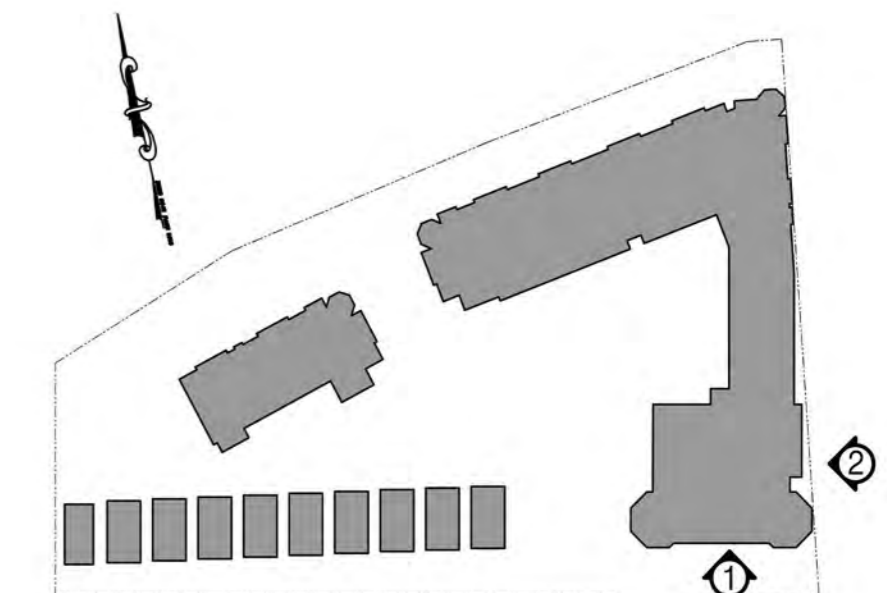


DECK LEVEL (MANSARD ROOF) (57.28) (59.86)
 PLATE HT.
 4TH FLR (47.28) (29.86)
 PLATE HT.
 3RD FLR (37.28) (19.86)
 PLATE HT.
 2ND FLR (27.28) (9.86)
 PLATE HT.
 AVERAGE GRADE PLANE (17.42)
 1ST FLR CONDO (17.28)

NOTE
 (INDICATES ELEVATION ABOVE SEA LEVEL)
 (INDICATES ELEVATION ABOVE AVERAGE GRADE PLANE)

① NORTH ELEVATION
 1/8" = 1'-0"

		
Dark Olive Representing Mountain Sage Hardi Plank	Philadelphia Cream	Quincy Tan Representing Khaki Brown Hardi Plank
		
Cottage Red	Great Barrington Green Representing Heathered Moss Hardi Plank	



KEY PLAN
 N.T.S.

PROPOSED NEW CONSTRUCTION FOR:
NORTH END REDEVELOPMENT
 (OCEAN GROVE) TOWNSHIP OF NEPTUNE, NJ
 BLOCK 101 LOT 2, 3 & 4

SEAL:

 Stephen J. Carlini, M.A.
 NJ Lic. # 1300000

SHORE POINT ARCHITECTURE, PA
 108 South Main Street, Ocean Grove, New Jersey 07756
 P: 732.774.6900 F: 732.774.7250 www.shorepointarch.com

HOTEL ELEVATIONS
 SCALE: AS SHOWN
 DRAWN: JJC

REVISION	DATE	DESCRIPTION
1	5/14/2019	REDEVELOPMENT ENTITY RESUBMISSION
2	6/21/2019	PLANNING BOARD SUBMISSION
3	3/9/2020	HPC REVISIONS
4	4/22/2021	HPC REVISIONS
5	8/9/2021	HPC REVISIONS
6	10/27/2021	HPC REVISIONS
7	1/28/2022	HPC REVISIONS

JOB NUMBER
 2018-23

A-11
 NORTH END

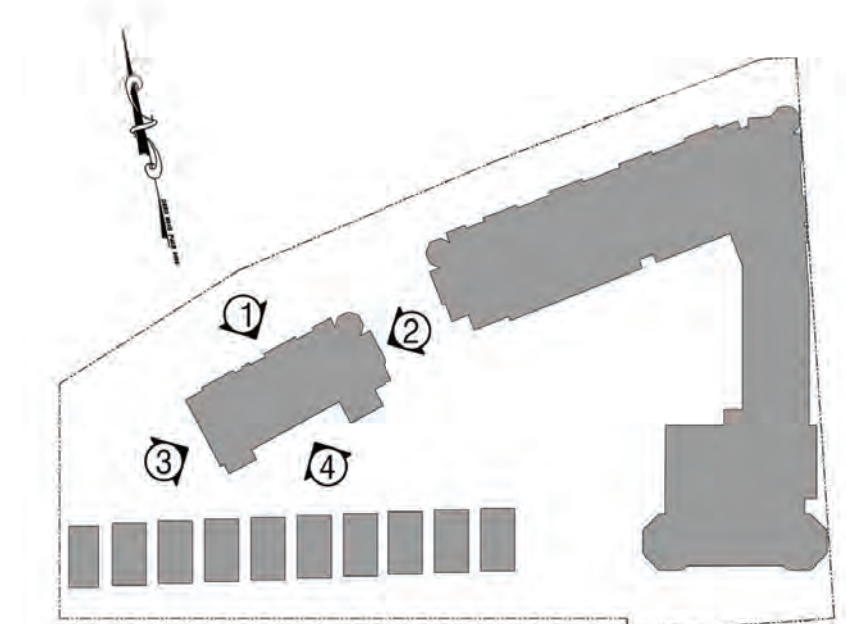


① BUILDING 2 - NORTH ELEVATION
1/8"=1'-0"

-  Dark Olive Representing Mountain Sage Hardi Plank
-  Great Barrington Green Representing Heathered Moss Hardi Plank
-  Philadelphia Cream
-  Quincy Tan Representing Khaki Brown Hardi Plank



① BUILDING 2 - NORTH ELEVATION
1/8"=1'-0"



KEY PLAN
N.T.S.

PROPOSED NEW CONSTRUCTION FOR:
NORTH END REDEVELOPMENT
(OCEAN GROVE) TOWNSHIP OF NEPTUNE, NJ
BLOCK 101 LOT 2, 3 & 4

SEAL
Stephen J. Carillo
Stephen J. Carillo, AIA
NJ LIC # A108889

SHORE POINT
ARCHITECTURE, PA
108 South Main Street, Ocean Grove, New Jersey 07756
P: 732.774.6900 F: 732.774.7250 www.shorepointarch.com

BUILDING 2 - ELEVATIONS
SCALE: AS SHOWN DRAWN: JC

DATE	REVISION	REVISION/COMMENT	ENTITY	REVISION/COMMENT
5/14/2019				
6/21/2019		PLANNING BOARD SUBMISSION		
3/9/2020		HPC REVISIONS		
3/24/2021		PER NJDEP APPROVAL		
4/22/2021		HPC REVISIONS		
10/17/2021		HPC REVISIONS		
1/28/2022		HPC REVISIONS		

JOB NUMBER
2018-23

A-8
NORTH END

TOP OF CONC. - ELEVATOR SHAFT (87.29) [60.85]
 TOP OF CONC. - STAIR TOWER (81.71) [64.28]
 TOP OF PARAPET (73.78) [56.35]
 DECK LEVEL (69.78) [52.35]
 PLATE HT. 10'-0"
 5TH FLR. (69.78) [42.35]
 PLATE HT. 8'-10"
 4TH FLR. (60.12) [32.68]
 PLATE HT. 9'-8"
 3RD FLR. (40.45) [23.01]
 PLATE HT. 8'-10"
 2ND FLR. (30.78) [13.35]
 PLATE HT. 9'-8"
 AVERAGE GRADE PLANE (17.42)
 1ST FLR. (17.28)



① HOTEL - SOUTH ELEVATION
 1/8" = 1'-0"




NOTE
 * (INDICATES ELEVATION ABOVE SEA LEVEL)
 (INDICATES ELEVATION ABOVE AVERAGE GRADE PLANE)

64'-8"
 AVG. GRADE PLANE TO
 TOP OF STAIR ENCLOSURE

69'-8"
 AVERAGE GRADE PLANE TO
 TOP OF ELEV. SHAFT ROOF

71'-4"
 AVERAGE GRADE PLANE TO
 TOP OF TURRET

AVERAGE GRADE PLANE (17.42')

-  Philadelphia Cream
-  Dark Olive Representing Mountain Sage Hardi Plank
-  Cottage Red

TOP OF CONC. - ELEVATOR SHAFT (87.29) [60.85]
 TOP OF CONC. - STAIR TOWER (81.71) [64.28]
 TOP OF PARAPET (73.78) [56.35]
 DECK LEVEL (69.78) [52.35]
 PLATE HT. 10'-0"
 5TH FLR. (69.78) [42.35]
 PLATE HT. 8'-10"
 4TH FLR. (60.12) [32.68]
 PLATE HT. 9'-8"
 3RD FLR. (40.45) [23.01]
 PLATE HT. 8'-10"
 2ND FLR. (30.78) [13.35]
 PLATE HT. 9'-8"
 AVERAGE GRADE PLANE (17.42)
 1ST FLR. (17.28)



① HOTEL - SOUTH ELEVATION
 1/8" = 1'-0"

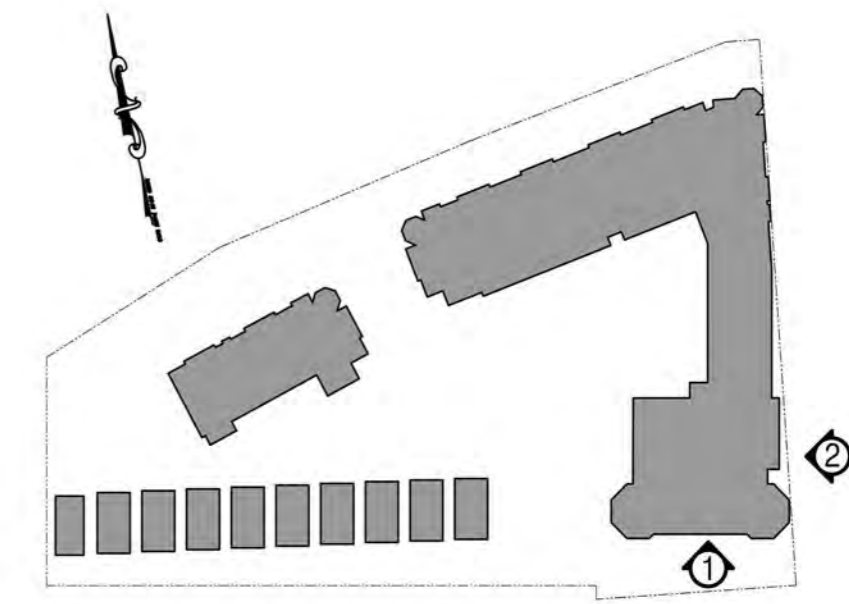
NOTE
 * (INDICATES ELEVATION ABOVE SEA LEVEL)
 (INDICATES ELEVATION ABOVE AVERAGE GRADE PLANE)

64'-8"
 AVG. GRADE PLANE TO
 TOP OF STAIR ENCLOSURE

69'-8"
 AVERAGE GRADE PLANE TO
 TOP OF ELEV. SHAFT ROOF


71'-4"
 AVERAGE GRADE PLANE TO
 TOP OF TURRET

AVERAGE GRADE PLANE (17.42')



KEY PLAN
 N.T.S.

PROPOSED NEW CONSTRUCTION FOR:
NORTH END REDEVELOPMENT
 (OCEAN GROVE) TOWNSHIP OF NEPTUNE, NJ
 BLOCK 101 LOT 2, 3 & 4

SEAL:

 Stephen J. Cichello, AIA
 N.J.L.C. # A000889

SHORE POINT ARCHITECTURE, PA
 108 South Main Street, Ocean Grove, New Jersey 07756
 P: 732.774.6900 F: 732.774.7250 www.shorepointarch.com

DRAWN: J.C.
HOTEL ELEVATIONS
 SCALE: AS SHOWN

DATE	REVISION
5/14/2019	REDEVELOPMENT ENTITY RESUBMISSION
6/7/2019	PLANNING BOARD SUBMISSION
3/24/2021	PER NJDEP APPROVAL
4/22/2021	IPC REVISIONS
6/9/2021	IPC REVISIONS
10/27/2021	IPC REVISIONS
1/26/2022	IPC REVISIONS

JOB NUMBER
 2018-23

A-11
 NORTH END



BLOCK 3

ATLANTIC AVE



BLOCK 2



SEAVIEW AVE



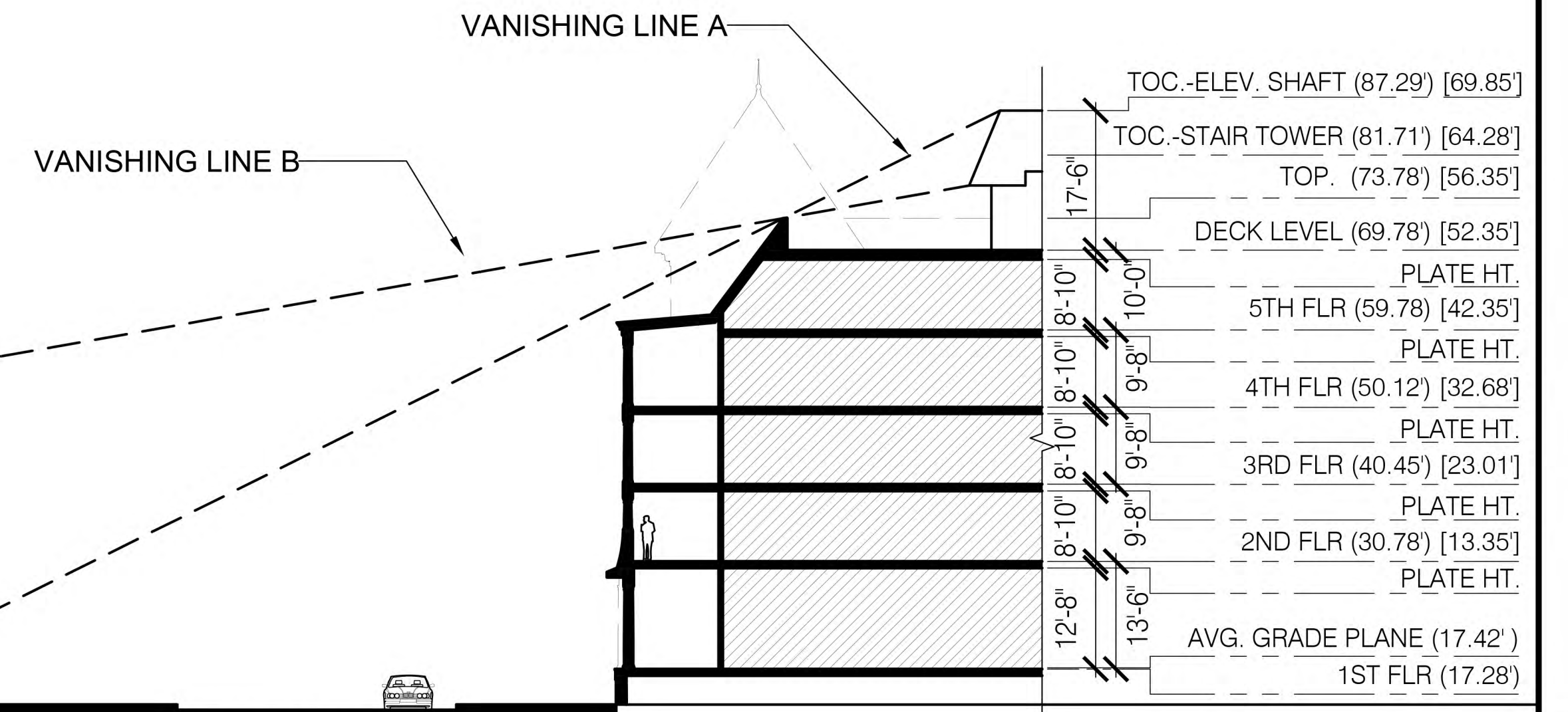
BLOCK 1



SPRAY AVE
APPROXIMATELY 102'-0"

APPROXIMATELY 324'-0"

ROOF SIGHT LINE DIAGRAM SOUTH ELEVATION
1/8" = 1'-0"



PROPOSED NEW CONSTRUCTION FOR:
NORTH END REDEVELOPMENT
(OCEAN GROVE) TOWNSHIP OF NEPTUNE, NJ
BLOCK 101 - LOT 2, 3 & 4

SCALE:

Stephen J. Caridge, AIA
NJ Lic. # A108886

SHORE POINT ARCHITECTURE, PA
108 South Main Street, Ocean Grove, New Jersey 07756
P: 732.774.6900 F: 732.774.7250 www.shorepointarch.com

DRAWN: JC
SCALE: AS SHOWN

DATE	REVISION
5/7/2015	REDEVELOPMENT ENTITY SUBMISSION
6/27/2015	PLANNING BOARD SUBMISSION
3/9/2020	HPC REVISIONS
3/24/2021	PER INDEP. APPROVAL
4/22/2021	HPC REVISIONS
10/27/2021	HPC REVISIONS
1/28/2022	HPC REVISIONS

JOB NUMBER
2018-23

NORTH END