

“Marina News”

Please take a moment and review what is offered at the Shark River Municipal Marina all year!

If you would like an application or more information please send us an E-mail: marina@neptunetownship.org & we can send it via E-mail, fax or mail.

You may also call or stop by to request more information. 732.775.7400

Summer Season Applications

- **Runs April 1st thru December 1st of said Year ***

- Summer Dockage Applications (*2012 rates are located on home page*)
- Transit Applications (*Runs weekly \$100/wk or Monthly \$400/Mnth MUST be paid in full prior to your stay*)
- Dockage Provisions (*You need this for the Dockage and Transit Applications*)
- Summer Dead on Land Storage (*On Block's*) @ \$ 60.00 per foot
- Summer Land Storage (*On a Trailer*) @ \$25.00 per foot NO Ramp Access
- Summer Land Storage with Ramp Access (*On a Trailer*) @ \$ 37.00 per foot
- Land Storage Provisions (*You need this for ALL summer land storage applications*)
- Trailer and/or Kayak Storage Applications



Launching Ramp Access

*** Yearly Pass ***

By filling out an application early, you can save \$45 off the 2012 rates which will only cost you \$170 for the year for one vessel or \$195 for a dual jet ski. Passes are not handed out until May!

Must pay by March 15th, 2012 in-order to receive the \$45.00 off the season pass.

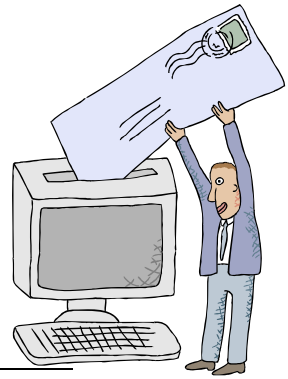
No Exceptions Sorry ☹

- Seasonal Ramp Applications run from Memorial Day weekend to the following Memorial Day weekend
- **Renewal Ramp Applications!** If you plan to renew your pass, we just need an application signed with the fee by March 15th of said year! You do not need to stop into the Marina Office we can electronically renew your ID Card
- **IF YOU DO NOT PLAN TO RENEW YOUR PASS YOU MUST RETURN THE ID CARD BY MAY 1ST OF SAID YEAR. YOU WILL AUTOMATICALLY BE BILLED FOR THE CARD AFTER SAID DATE AND IT WILL BE DEACTIVATED! CONTACT THE OFFICE FOR FURTHER DETAILS.**
- Ramp Provisions (You need this for all ramp applications)

Winter Storage Applications

* Runs as early as October 15th to May 15th of said year *

- Winter land Storage Applications (On Trailer or Block's) @ \$25.00 per foot additional fees will apply if you need to be hauled and blocked.



Don't miss the...

"EARLY - BIRD" SPECIAL!

COMPLIMENTARY POWER WASH:

MUST HAVE SIGNED CONTRACTS, DEPOSITS TO BOTH ENTITIES AND A SCHEDULED HAUL-OUT DATE, WHICH CAN NOT CHANGE, PRIOR TO NOVEMBER 1ST OF SAID YEAR OR YOU WILL BE BILLED ADDITIONAL FEES FOR THE POWER WASH. MARINA PERSONAL CAN ONLY DO THE POWER WASHING. A SPRING WORK FORM MUST ALSO BE SIGNED AND FILLED OUT PRIOR TO YOUR VESSEL BEING HAULED FOR THE WINTER.

Payment due December 1st of said year in full for winter land / water storage to the marina office. A 1.5% fee will be applied to any out standing balance each month it is not paid in full from the marina office.

- Wet Winter Storage Applications (In the water at our Main U-Shape Pier) @ \$20.00 per foot
- Winter Storage Land Provisions (You need this form for all winter land storage)
- Wet Winter Storage Provisions (You need this form for all in water winter storage)