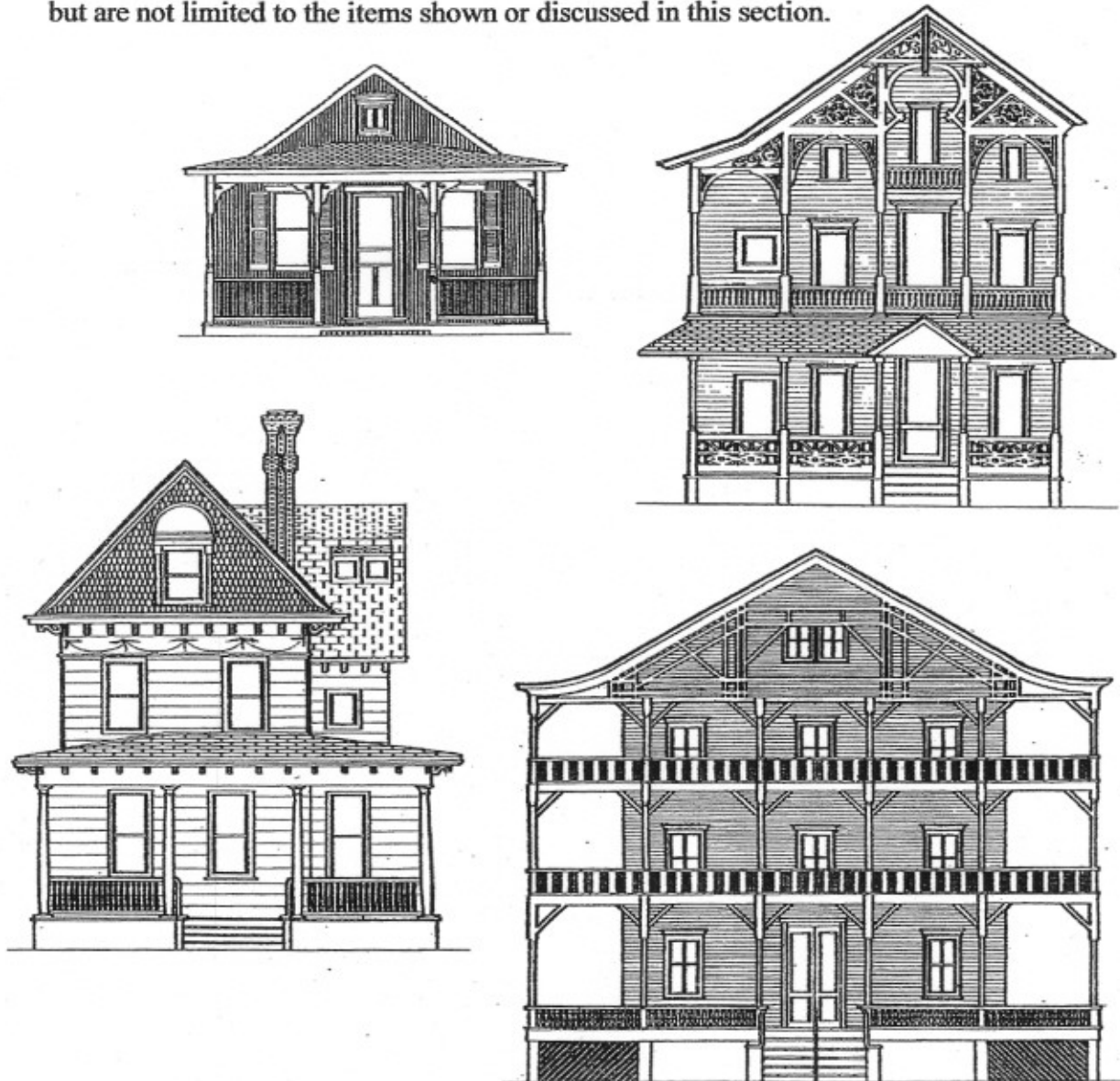


## Ocean Grove Residential Structures -Facade Design Guidelines

### V. Illustrations of Appropriate Architectural Treatments and Styles

The purpose of this section is to provide a quick visual guide and reference which highlights various historic details common to the architecture of the Victorian Era and acceptable within the established parameters of **The Design Guidelines** in the repair, maintenance, restoration, renovation, reconstruction, alteration, addition and construction of residential structures within the Ocean Grove Historic District. The examples include but are not limited to the items shown or discussed in this section.



## **Ocean Grove Residential Structures -Facade Design Guidelines**

### **A. Period Architectural Home Styles of Ocean Grove**

The mandate of the HPC is the preservation, restoration, renovation and replication of the Ocean Grove Vernacular architecture found in the Historic District. The following prototypes are provided, illustrations of the characteristic elements of each particular style to guide those Applicants appearing before the HPC.

The illustrations are offered as a guide and reference to all prospective Applicants and their design and construction professionals prior to the preparation of construction plans, specifications and detailed architectural drawings and appearance before the HPC in public forum.

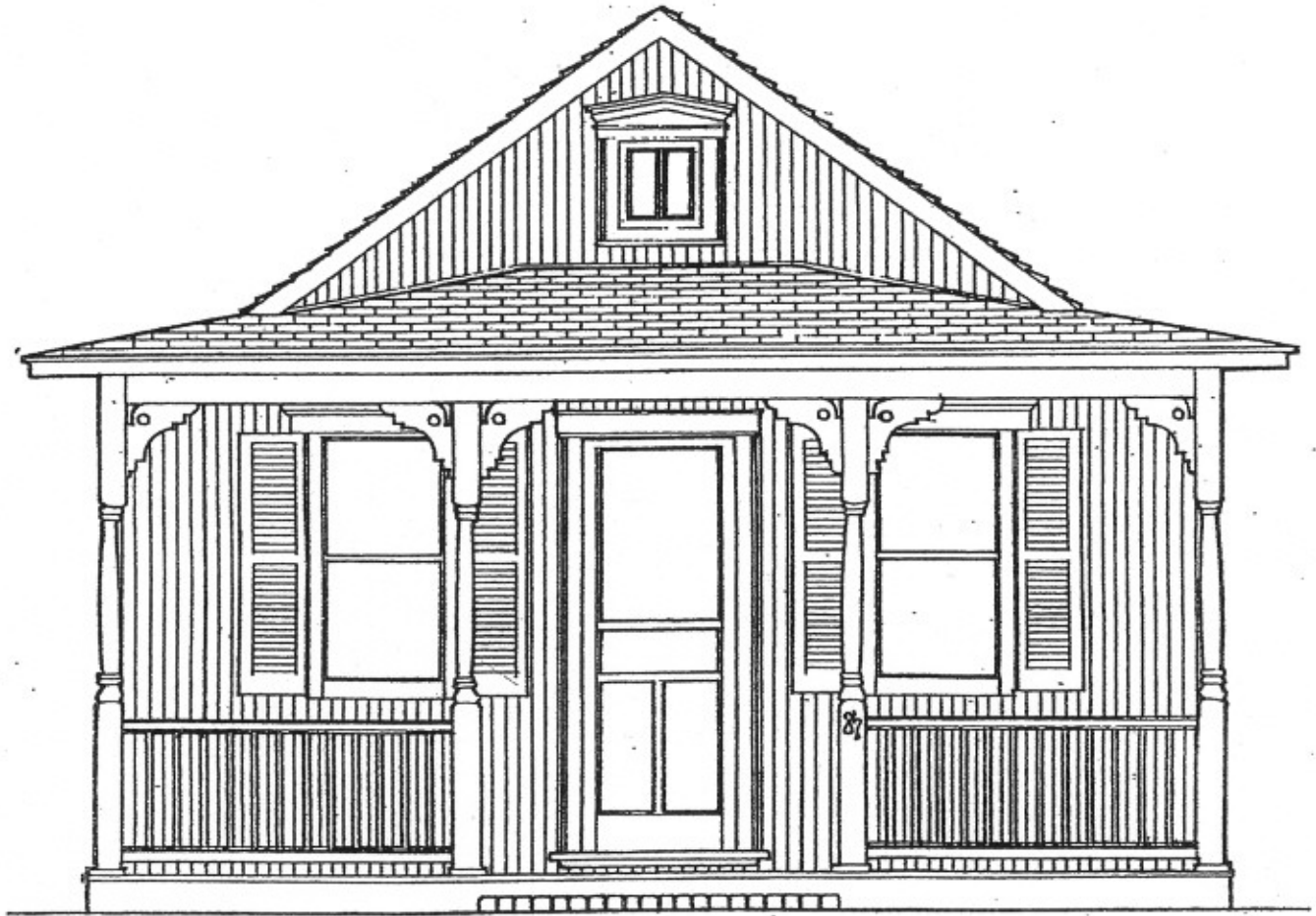
Applicants should make every effort to avoid unacceptability of proposed improvements and designs by becoming familiar with **The Design Guidelines** and the sample prototypes and various details and standards presented in this document. This will assist Applicants in avoiding a rendered HPC opinion that the proposed work is either inappropriate or incompatible or inconsistent with the character of the Historic District of Ocean Grove.

In Ocean Grove, particularly, many structures contain elements of more than one of the below listed styles and the styles referenced elsewhere in this document. Pure and comprehensive examples are not the norm. However, in many cases, good taste and an understanding of Ocean Grove Victorian era and Seaside Victorian Vernacular design have been used by original designers, original builders and successive homeowners who have changed their homes' exteriors. Their efforts have resulted in unique treatments and charming hybrids. These hybrids fall into the larger general category of single and multi-family dwellings which are so strongly linked to the past architectural period and place in American history that they serve as an exhibition of architectural wealth.

### **Sample prototypes which follow include:**

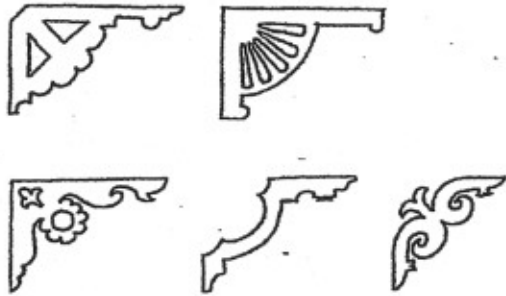
1. *Cottage/Bungalow*
2. *Gothic*
3. *Italianate*
4. *Stick*
5. *Eastlake*
6. *Queen Anne*
7. *Colonial Revival*
8. *American Four Square*
9. *Victorian Eclectic*
10. *Craftsman*

# Cottage/Bungalow Style

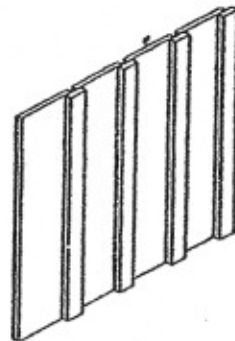
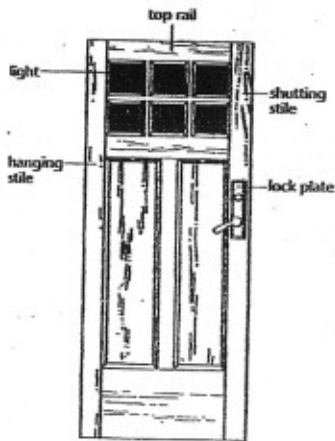
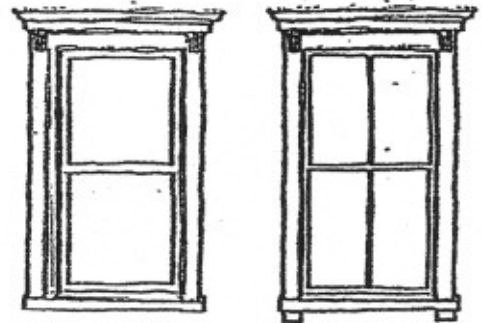
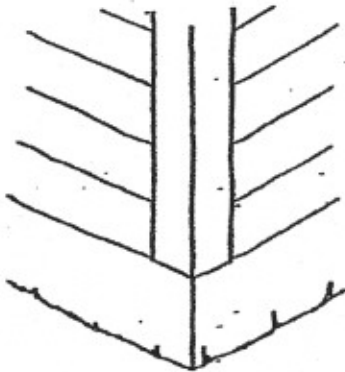
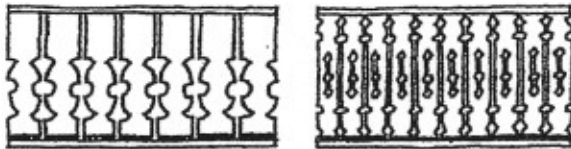
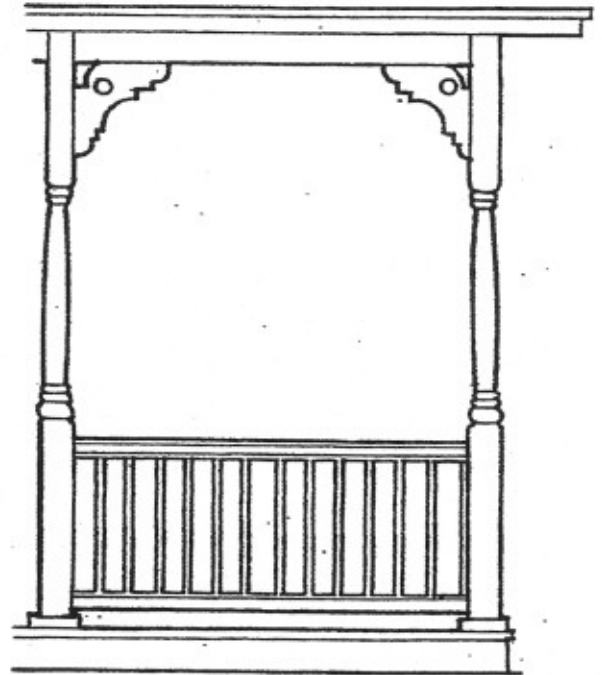


The summer cottage is a small and simple 1-story rectangular wood frame structure which was originated from simple designs seen at other camp meeting sites and evolved from the wooden floor configurations of the early tents used by the earliest members of the Ocean Grove Camp Meeting Association. More elaborate cottages spawned half-stories and second floors with balconies and sometimes featured scrollwork at eaves and railings. Most cottages were constructed of board and batten type exteriors, usually in vertical pattern and unadorned except for the corner brackets at porch posts. Often railing work was composed of equally spaced square wood spindles. Doors were centrally positioned, sometime double leafed, flanked by small narrow windows with operable shutters. Door and window openings were either arched or squared. Later cottages are better described as bungalows, or laborer cottages, influenced by craftsman style homes from 1900-1930's. Bungalows featured wood shingle and board siding in conjunction with hip roof details, larger and low overhangs at gables, more spacious open porches and exposed rafter ends.

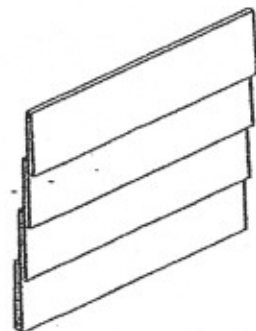
# Cottage/Bungalow Details



BRACKETS



board and batten siding

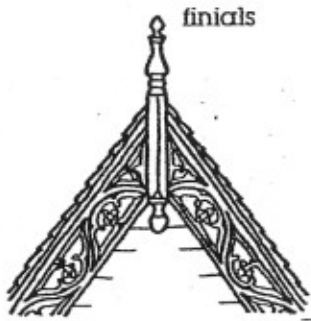


bevel siding

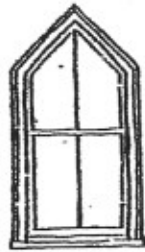
# Gothic Style



The Gothic style followed the simple Cottage Style in many respects but was larger in size, incorporated variations in floor plan utilizing 'L' and 'T' shaped forms. Windows and doors were often arched or pointed at the top and second floor windows usually extended into the gable areas. Wall areas extended upward into the gable areas. Siding was usually wood board and batten. Designs frequently created multiple or cross gables which then featured decorative gables on both front, rear and side elevations. Elaborately decorated gable boards and steeper pitched gable designs are also notable. Roof dormers from attic spaces and 1-story extensions were a product of spatial requirements and necessary expansions as family needs demanded.



finials

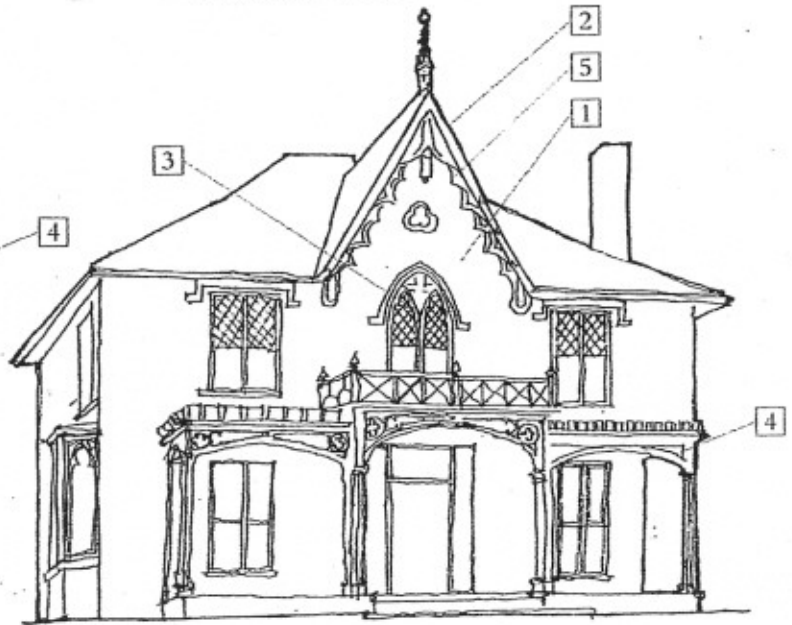
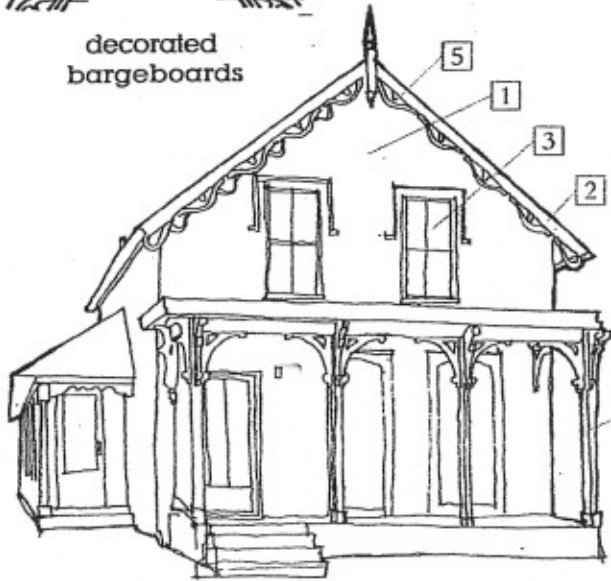


# Gothic Details

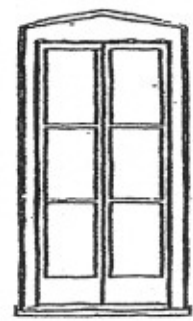
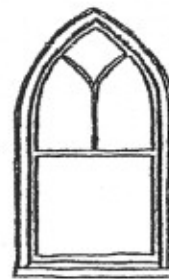
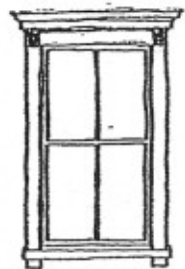
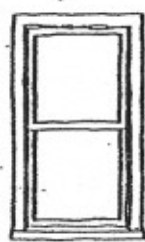
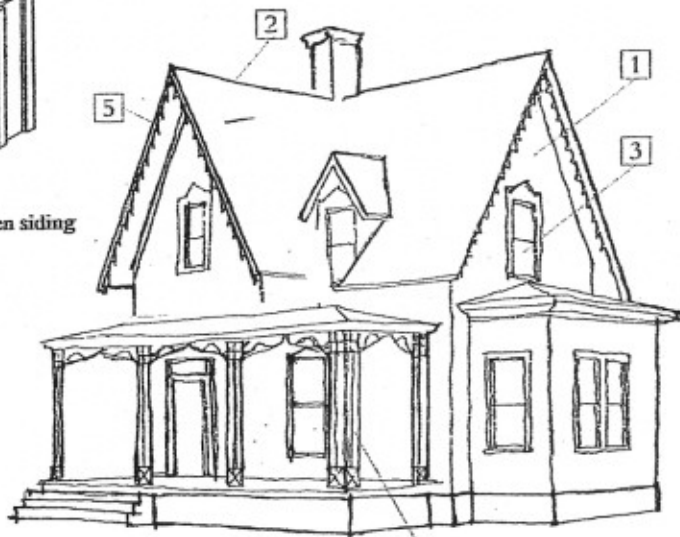
## IDENTIFYING FEATURES

- 1 WALL SURFACE EXTENDING INTO GABLE WITHOUT BREAK
- 2 STEEPLY PITCHED ROOF, USUALLY WITH STEEP CROSS GABLES
- 3 WINDOWS EXTENDING INTO GABLES, OFTEN WITH GOTHIC (POINTED-TOP) SHAPES
- 4 ONE-STORY ENTRY OR FULL-WIDTH PORCH, COMMONLY WITH FLATTENED GOTHIC ARCHES
- 5 GABLES WITH DECORATED VERGE BOARDS

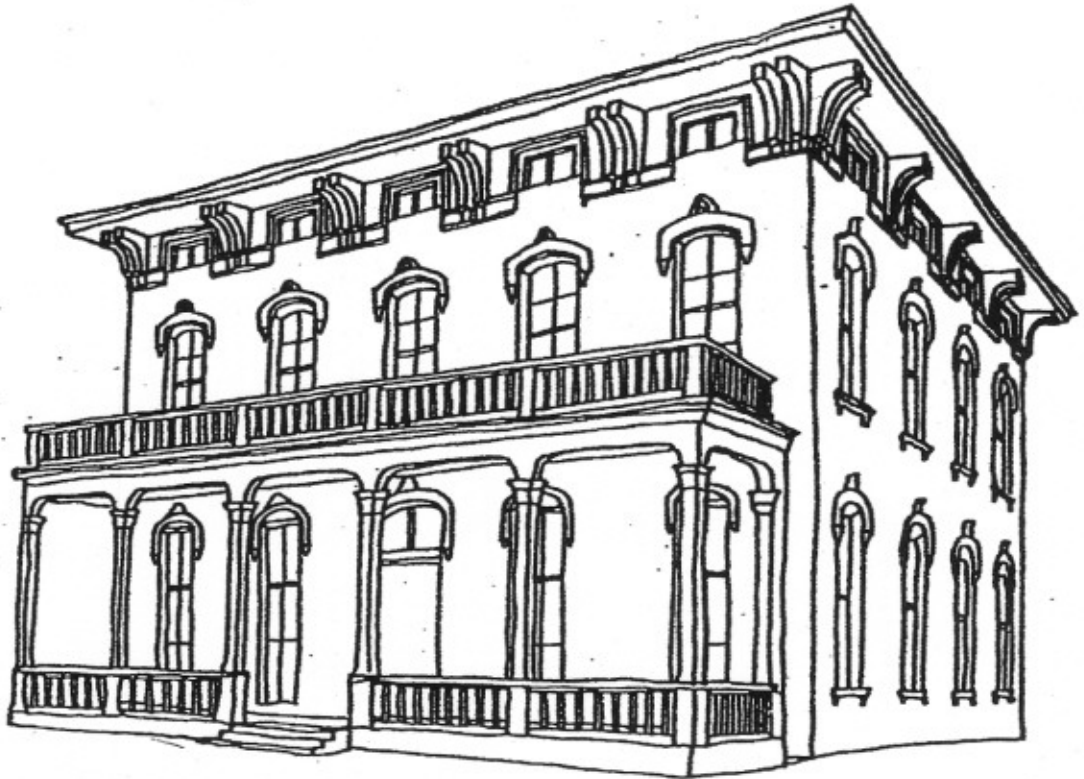
decorated bargeboards



board and batten siding



# Italianate Style

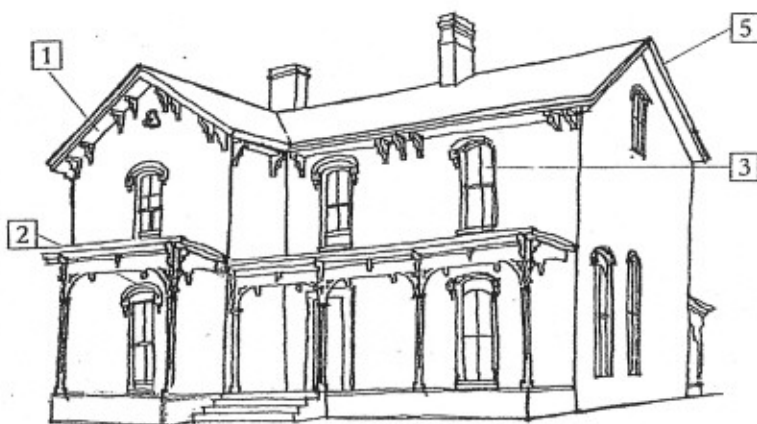
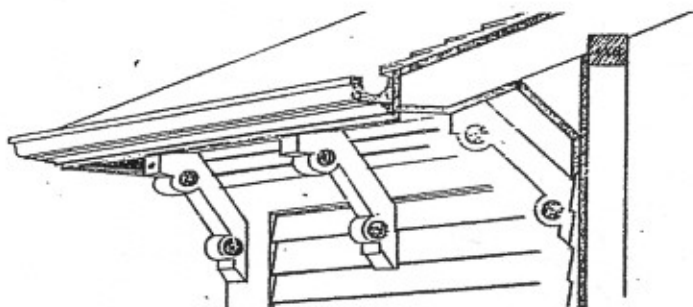
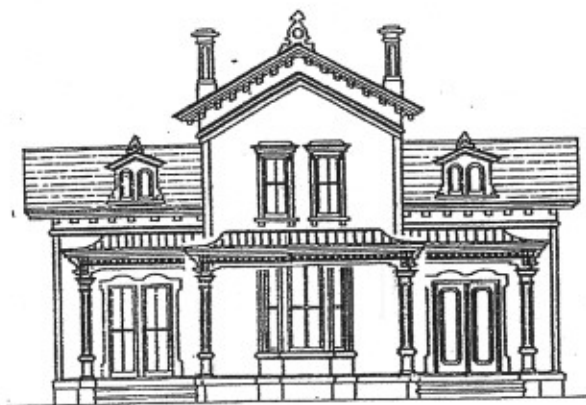


The Italianate Style is not a dominant form of architecture in Ocean Grove, but rather a design influence which can be frequently identified on various buildings. Most notable features include broad flat roofs or roof areas with square towers and generous verandas. Floor plans were usually asymmetrical and doors and windows were ornamented with articulated wood trim and sometimes designed with arched or rounded crossheads and header trim at the top of the door or window opening. Original siding was often wide wood board and batten. Entry doors usually double leaf hinged type with detailed raised and recessed panel work. Gables were minimally pitched thereby clearly distinguishing the style from that of Gothic. Towers were capped with low profile hip roofs and large perimeter overhangs elaborately detailed and ornamented with weighty brackets and cornice moldings.

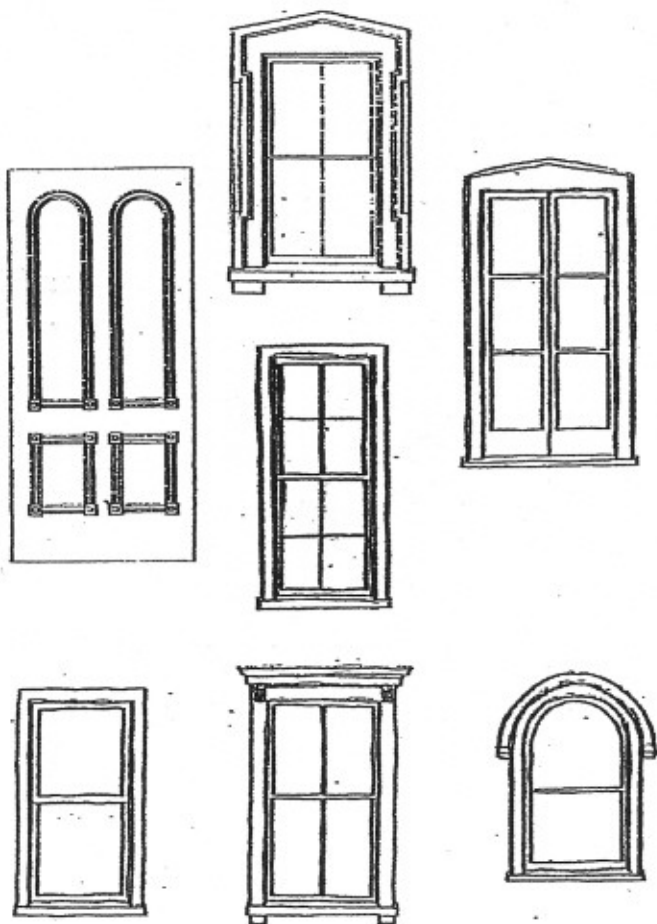
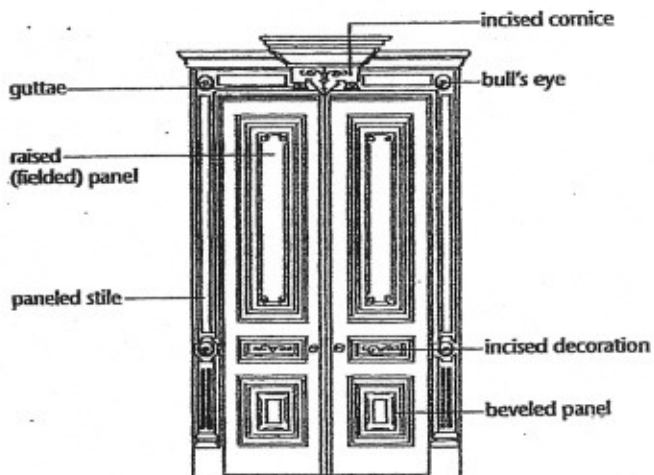
# Italianate Details

## IDENTIFYING FEATURES

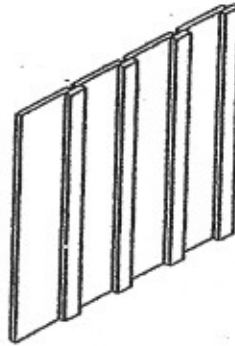
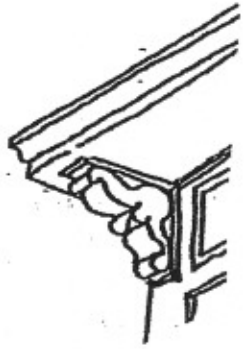
- 1 WIDELY OVERHANGING EAVES WITH DECORATIVE BRACKETS BELOW
- 2 ELABORATED WINDOW CROWNS
- 3 TALL, NARROW WINDOWS, SOMETIMES ARCHED ABOVE
- 4 SOMETIMES HAVE SQUARE CUPOLA OR TOWER
- 5 LOW-PITCHED ROOF



## DOUBLE DOORS



# Italianate Details

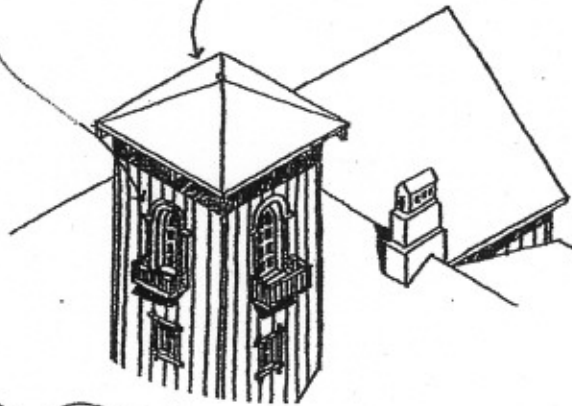


Board and Batten Wood Siding

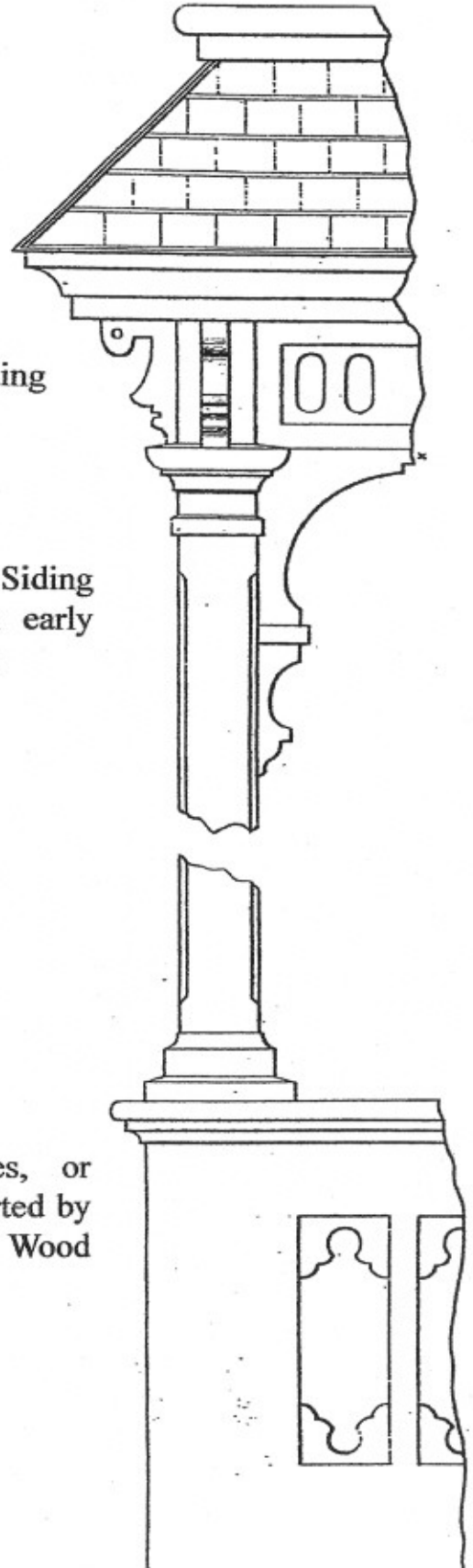
Common to the Italianate Style were Square Towers and Cupolas

Top of Windows were often rounded

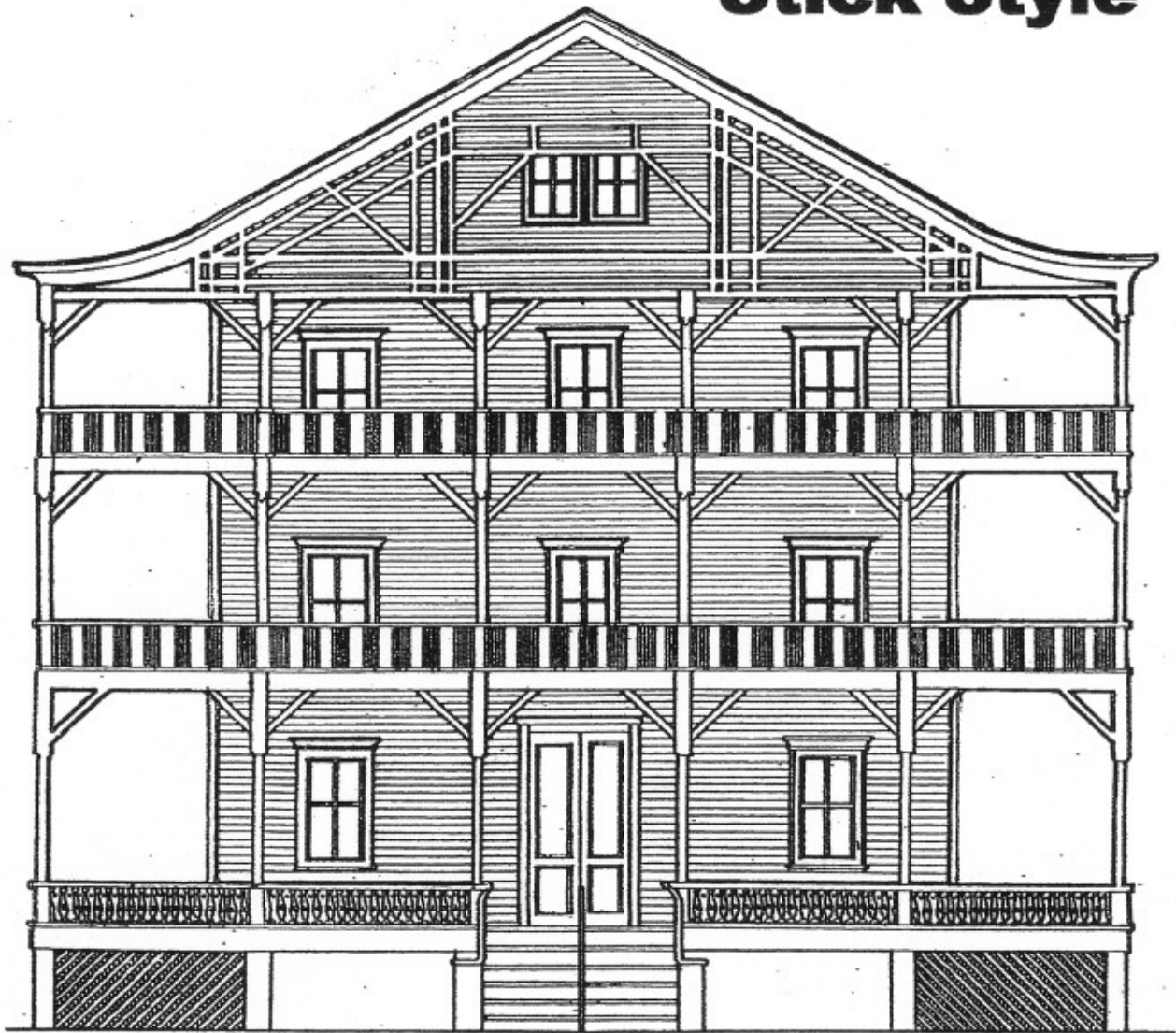
Board and Batten Wood Siding was usually found on early Italianate Style Cottages



Projecting Roof Eaves, or Overhangs, were supported by elaborately crafted Wood Brackets



# Stick Style

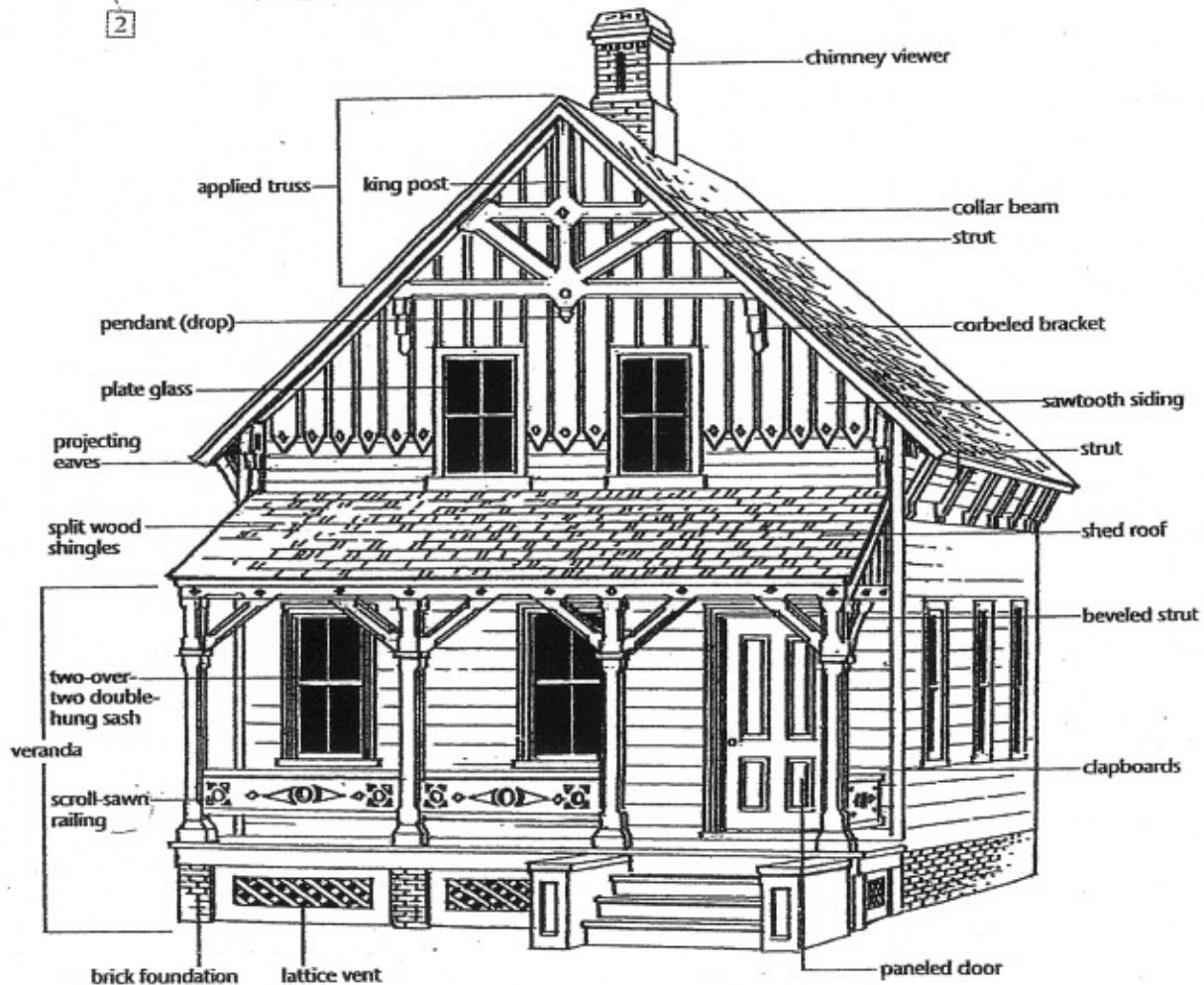


The Stick Style buildings date back to the 1870's in Ocean Grove, and are characterized by the decorative "stick-work" which is applied to the outside of the wood clapboard siding in a pattern of vertical, horizontal and diagonal boards. The aesthetic intent of Stick Style detailing was to express the wooden framing system. Most commonly, gable roofs exposed roof framing and trusses at gable ends. Other notable features included broad overhanging eaves and multiple-story encircling balconies and covered porches with simple unornamented but oversized diagonal brackets, braces, roof rafters, corner boards and porch posts. Railings were often composed of square spindles but sometimes featured more decorative scrollwork design solutions. In general, structural supports were simple, deliberately exposed and openly expressed for public view. Window sash were either 2/2, 2/1 or 1/1 double hung type.

# Stick Details

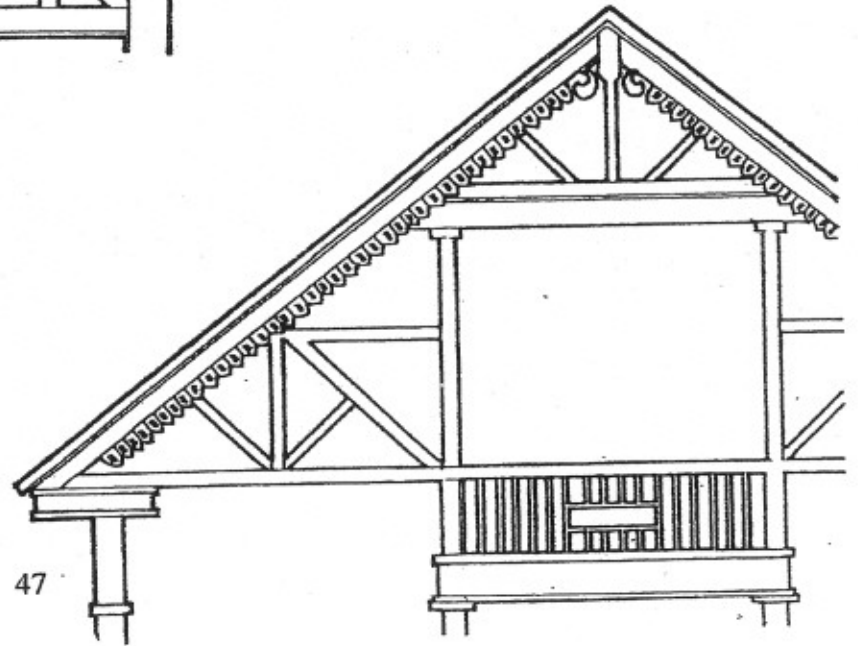
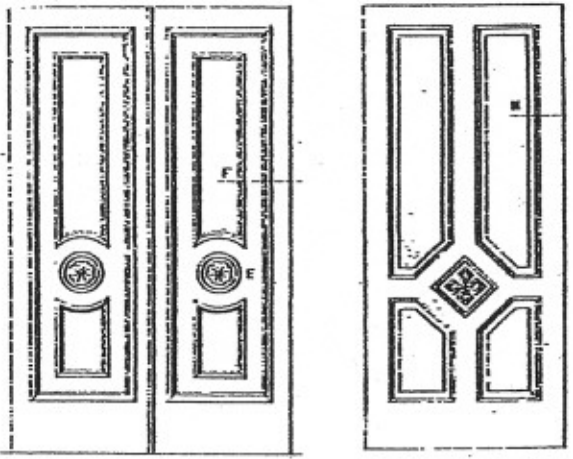
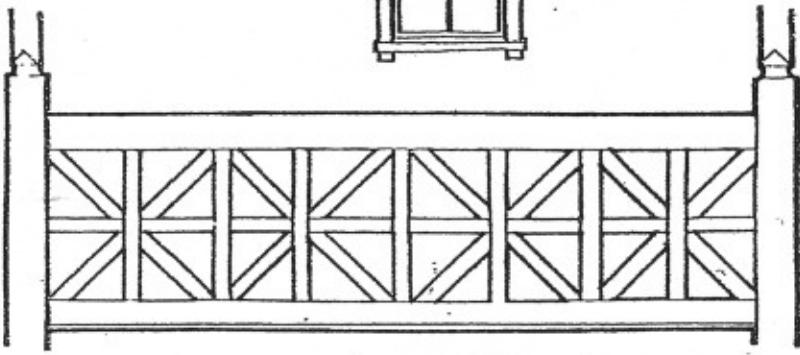
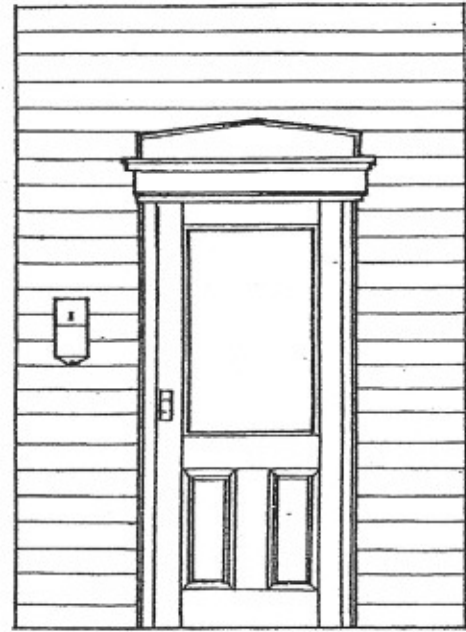
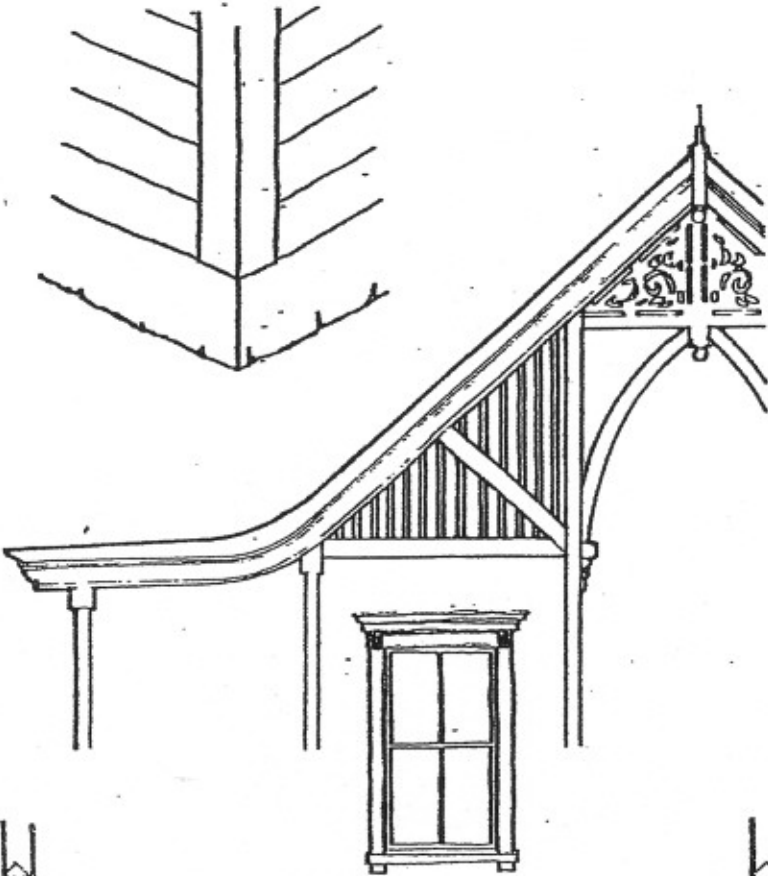
## IDENTIFYING FEATURES

- 1 DECORATIVE TRUSSES IN GABLES
- 2 DIAGONAL OR CURVING PORCH-SUPPORT BRACES
- 3 GABLED ROOF, USUALLY STEEPLY PITCHED WITH CROSS GABLES
- 4 OVERHANGING EAVES, USUALLY WITH EXPOSED RAFTER ENDS
- 5 HORIZONTAL AND VERTICAL BANDS (LESS COMMONLY DIAGONAL) RAISED FROM WALL SURFACES FOR EMPHASIS



# Stick Style Cottage

# Stick Details

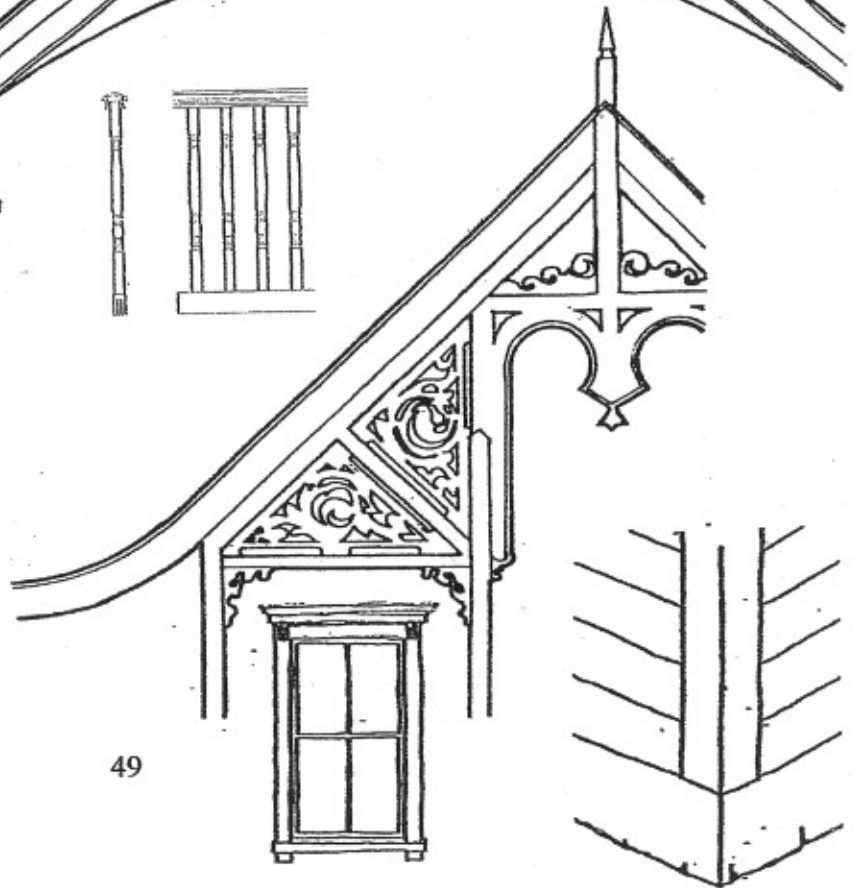
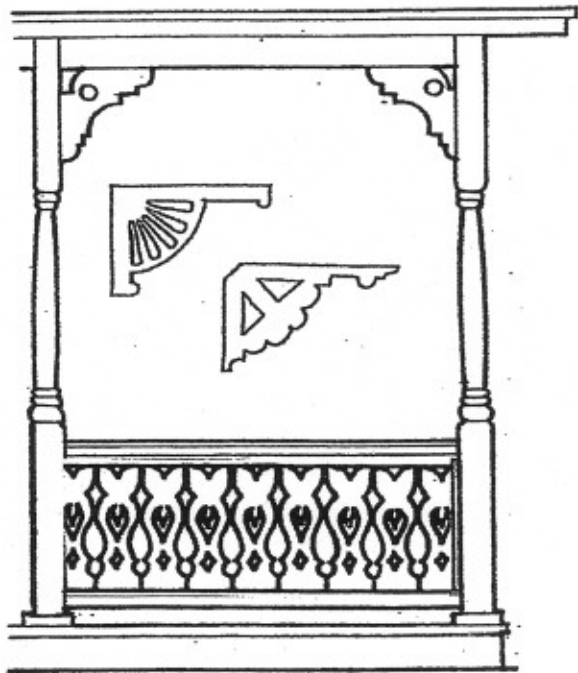
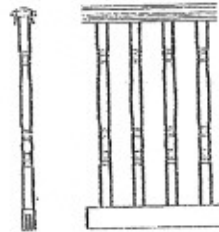
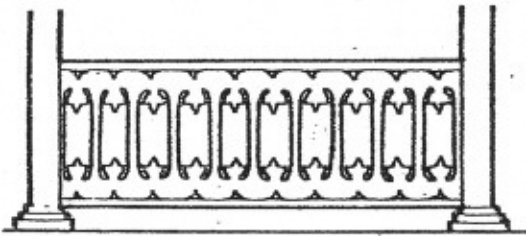
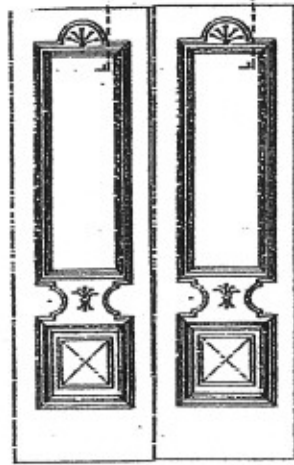
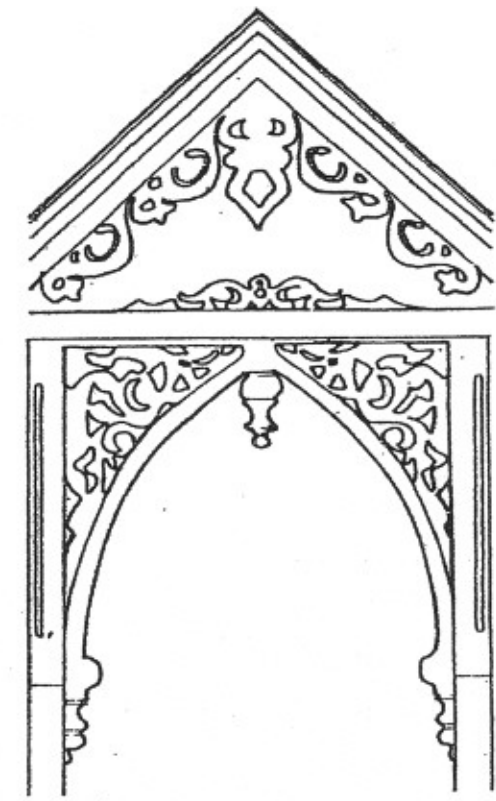


# Eastlake Style

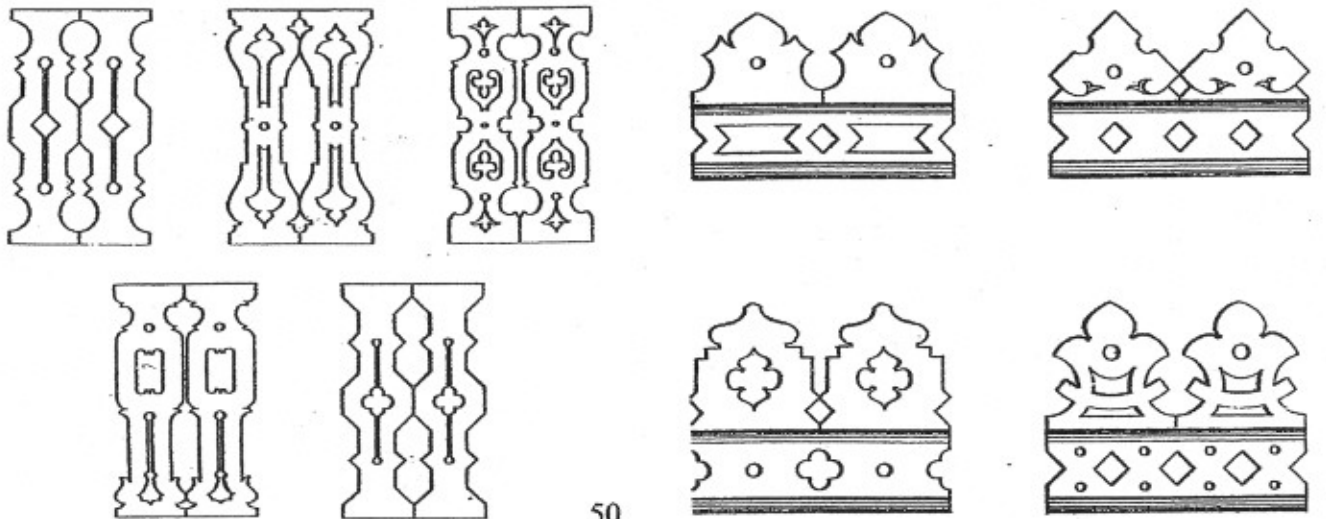
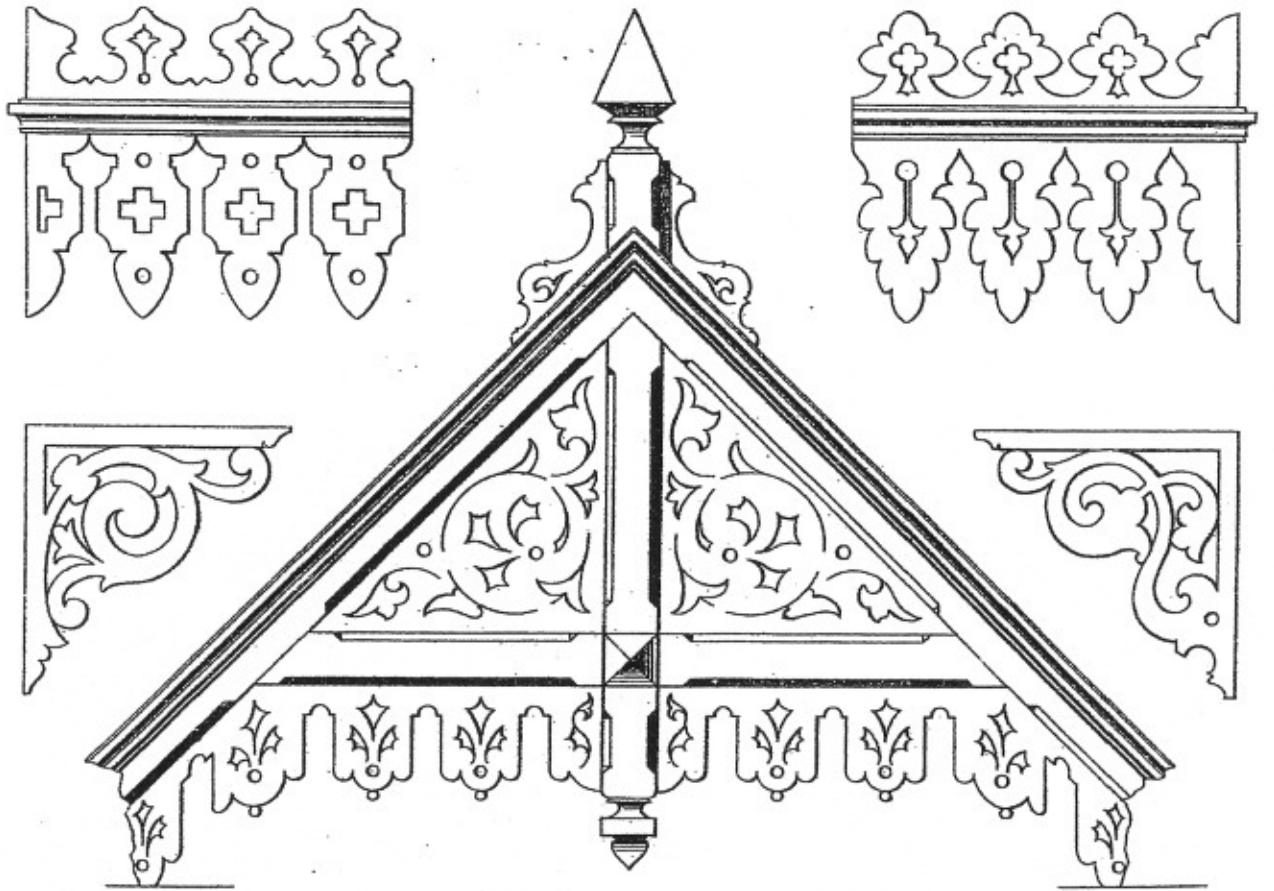


The Eastlake Style is less an architectural style than a decorative embellishment often found on Gothic, Stick and Queen Anne designs and named after English designer Charles Locke Eastlake. The style is characterized by tapered, tooled and rounded porch columns and posts, turned railing spindles with spool-like balusters and cut-out patterns. Spindles were also featured at top of porch areas friezes in combination with various carved wood panels, fan-like post brackets, moldings and scroll brackets. The Eastlake designs were a direct result of the mechanized wood lathe, gouge and chisel which allowed for robust knob-like forms, bulbous post features and 3-dimensional brackets rather than the 2-dimensional and relatively flat scrollwork frequently referred to as "gingerbread".

# Eastlake Details



# Eastlake Details



# Queen Anne Style

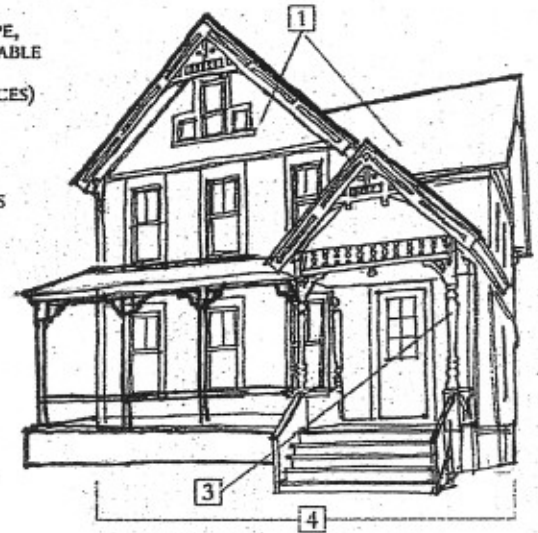
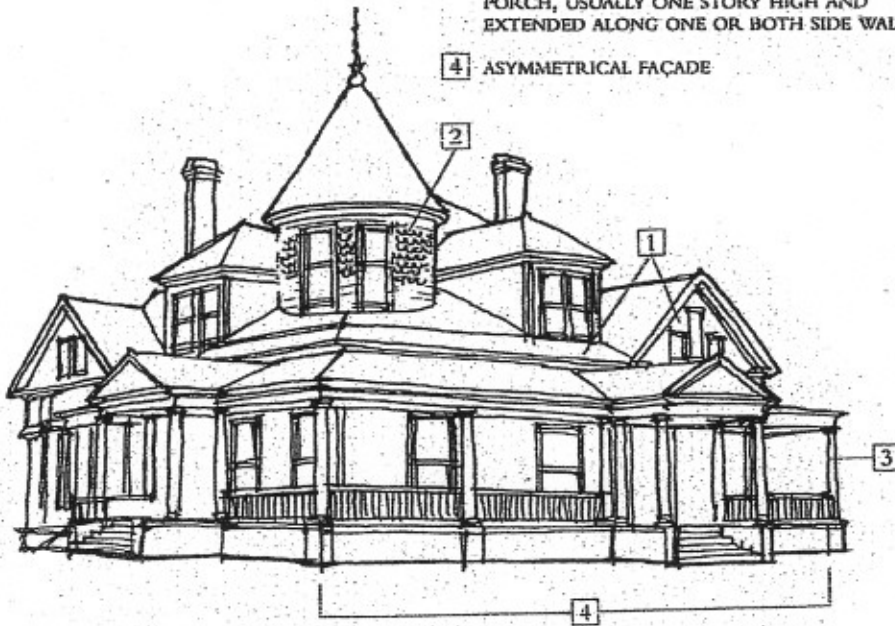


The 1880's thru 1900 saw the emergence of Queen Anne architecture in Ocean Grove. Exteriors blended a variety of materials, shapes, forms and textures featuring asymmetrical designs and massing with ornamental towers and turrets. Mixtures of narrow width horizontal wood clapboard siding and patterned shingles including "fish scale" and "diamond" designs were dominant. Brick and exposed split face stone foundations were used in combination with elaborately turned and cut out flat scrollwork ornament. Extensive use of brackets and decorative moldings, colored multi-paned art window sashes and doors and a variety of turned, tapered, rounded and tooled porch columns and newel posts is most notable. Queen Anne designs introduced a greater variety of window and door shapes and integrated complementary open air balconies and window bays. Roofs were multi-planed, multi-gabled with projecting eaves at attic gables creating covered and recessed porch areas. Roof cresting, finials and flared shingle details added much detail.

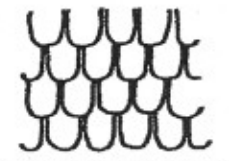
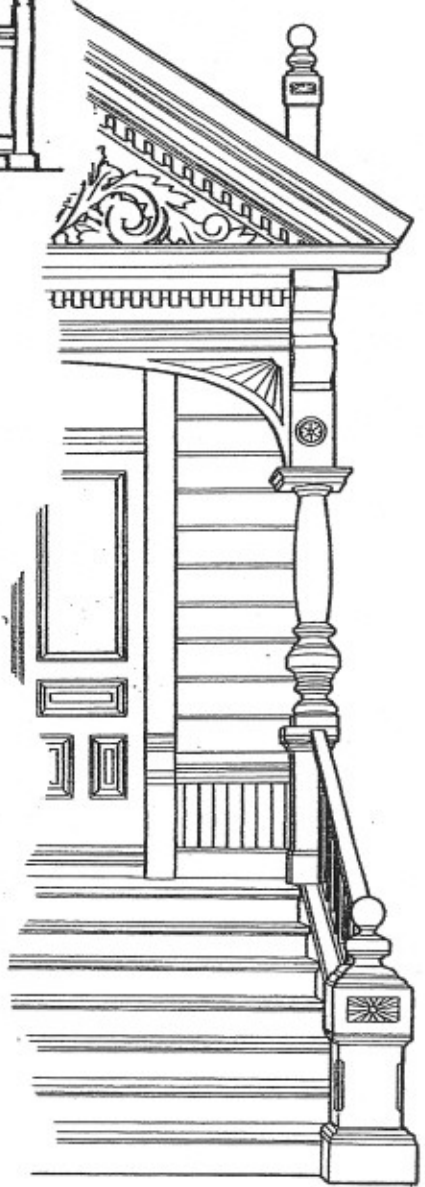
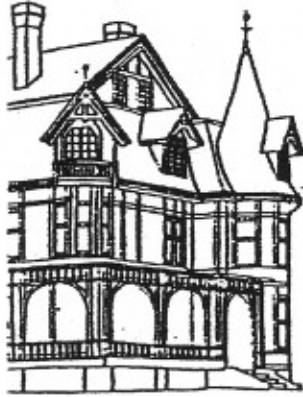
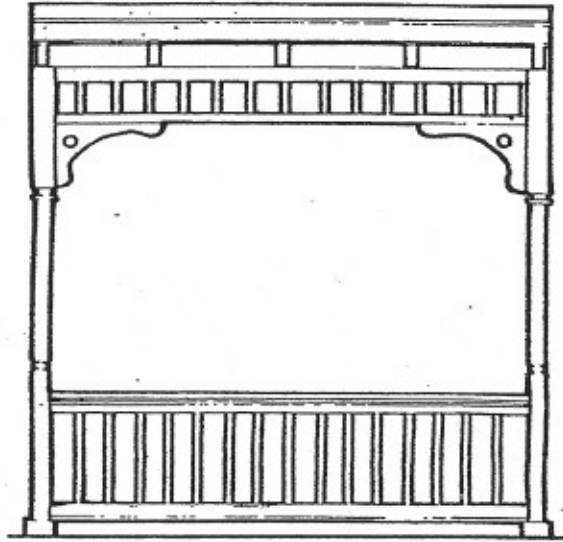
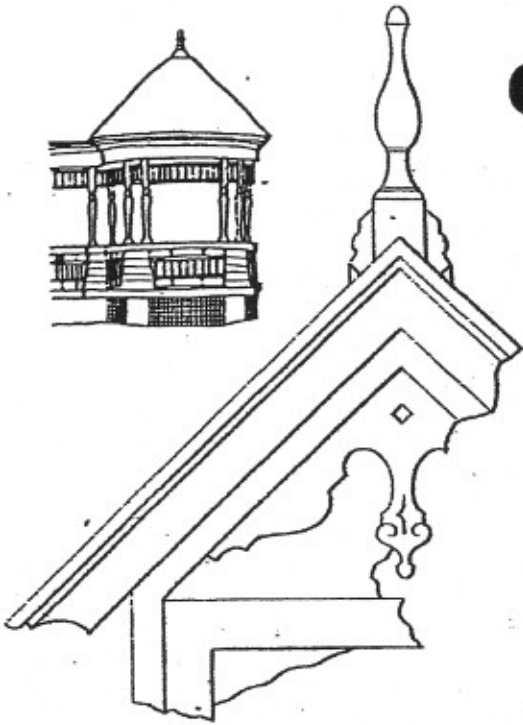
# Queen Anne Details

## IDENTIFYING FEATURES

- 1 STEEPLY PITCHED ROOF OF IRREGULAR SHAPE, USUALLY WITH DOMINANT FRONT-FACING GABLE
- 2 TEXTURED SHINGLES (AND/OR OTHER DEVICES) TO AVOID SMOOTH-WALLED APPEARANCE
- 3 PARTIAL OR FULL-WIDTH ASYMMETRICAL PORCH, USUALLY ONE STORY HIGH AND EXTENDED ALONG ONE OR BOTH SIDE WALLS
- 4 ASYMMETRICAL FAÇADE

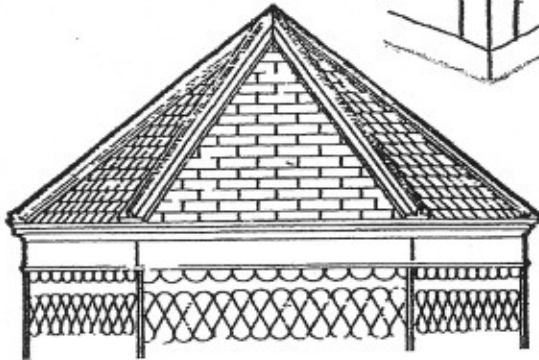
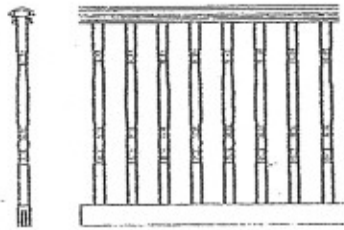
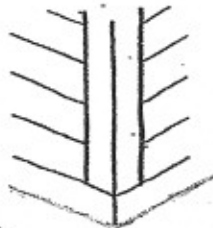


# Queen Anne Details



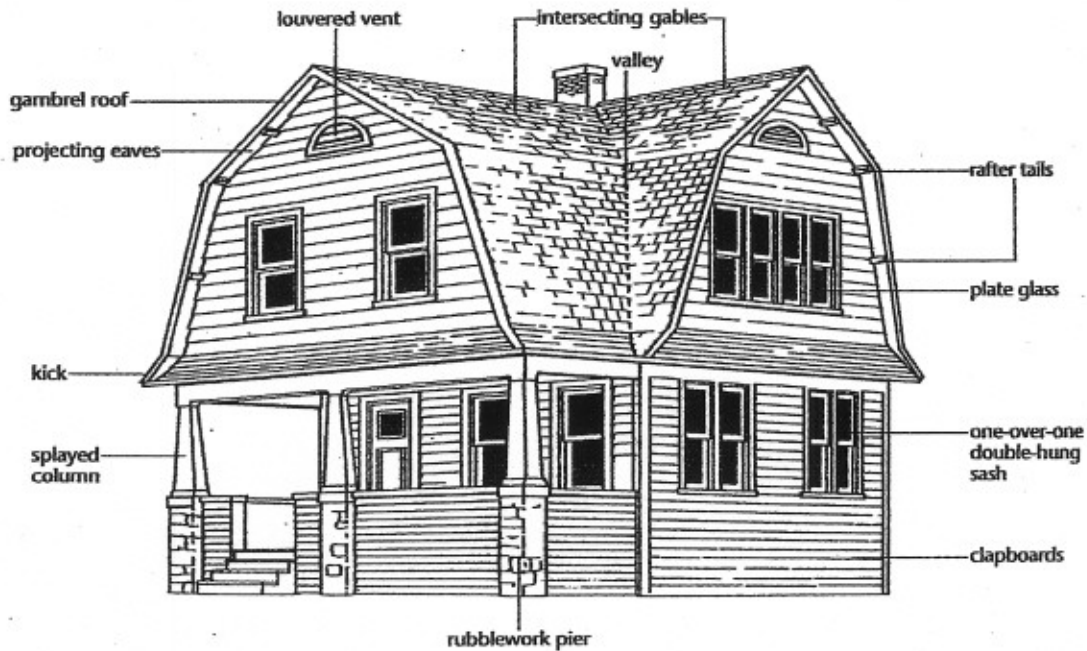
fish scale shingles

decorated porches



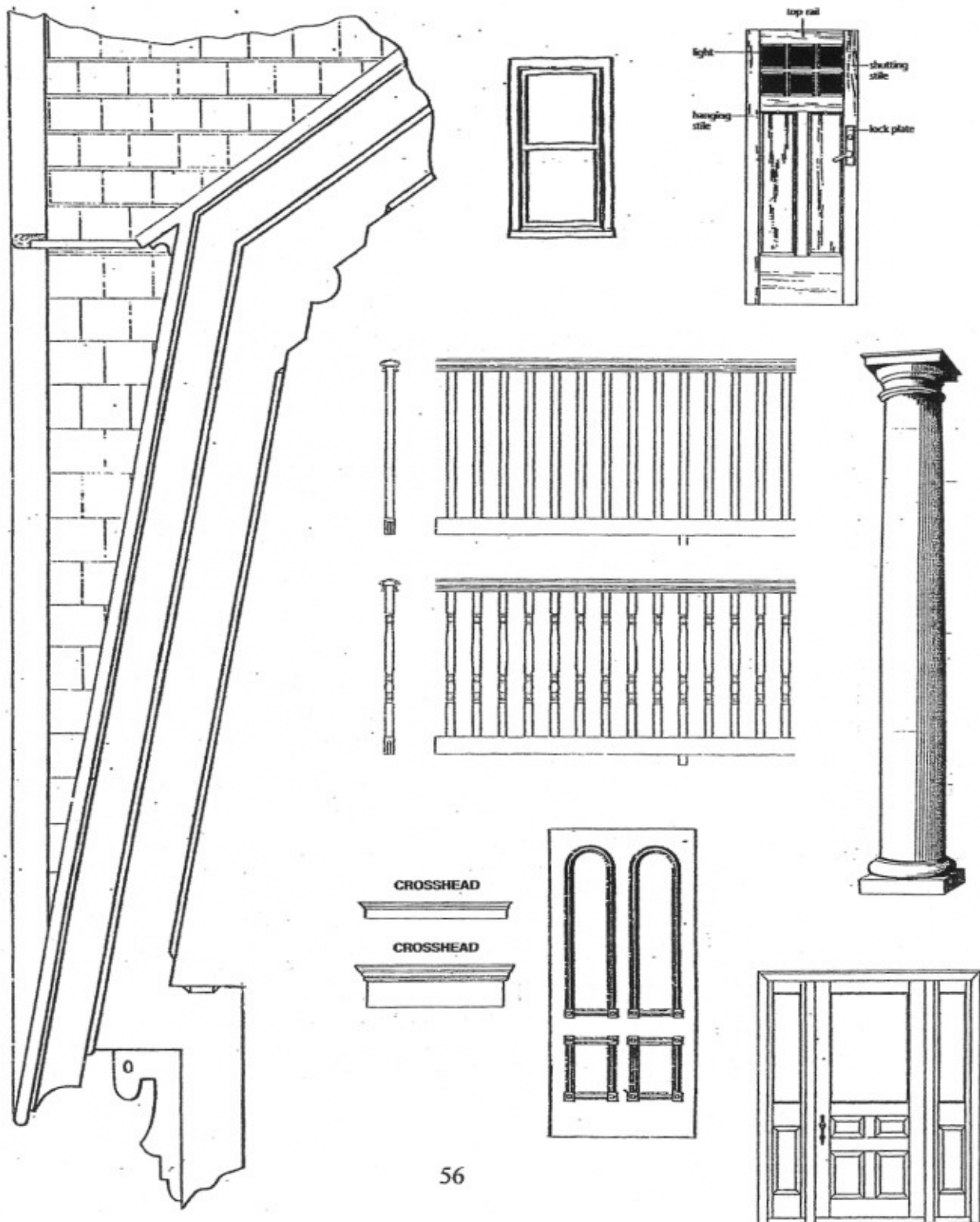


# Colonial Revival Style

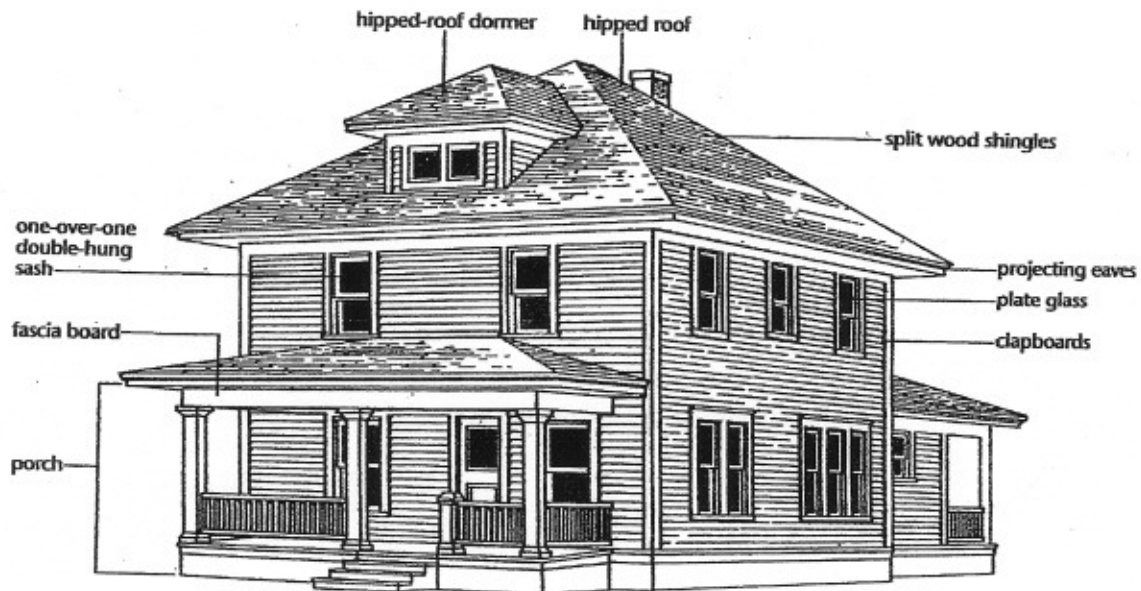


The Colonial Revival has had the most significant impact on the early Victorian design aesthetic found in Ocean Grove. Design trends in the late 19th Century showed renewed interest in simpler forms and classic styles. The trend continued well into the first half of the Twentieth Century with Colonial Revival Styles including variations of the American Four Square, Dutch Colonial, and expanded Bungalows with Colonial and Classical design influences. Features included classical tapered columns, Palladian windows, columns base piers, doorways with sidelights, large 1/1 single plate window sash designs frequently placed in pairs or even threes. Roofs were usually moderately pitched with a fewer, but notable number of structures adapting Dutch Colonial gambrel style roof forms. Siding treatments were of either wood clapboard or shingle. Window and door openings as well as building corners were trimmed with flat boards. Overhangs and eaves exposed rafter tails and attic sometimes spouted small dormers, louvered vents or attic windows for added ventilation. Renovations of some original structures were performed as a result of the Colonial Revival movement. Renovations at those structures replaced ornamental railings with square spindles and simpler door and window replacements. As a result of their craftsmanship, many of these modifications and additions have acquired historic significance of their own.

# Colonial Revival Details

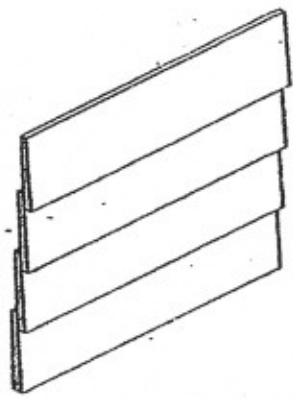
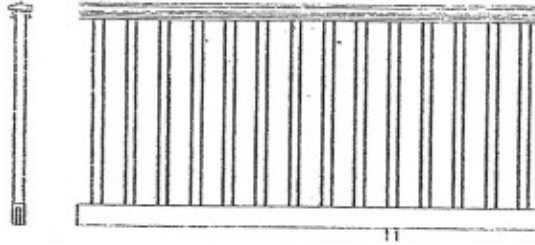


# American Four Square Style

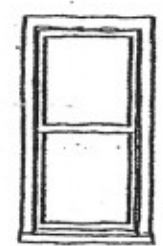
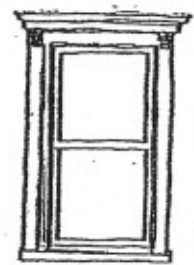
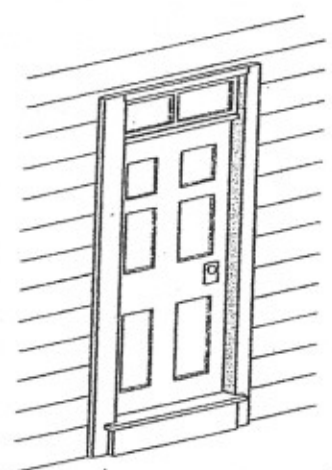
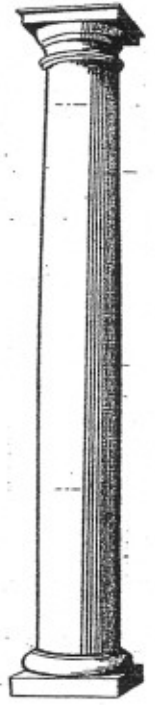
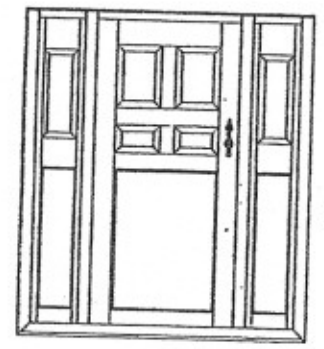
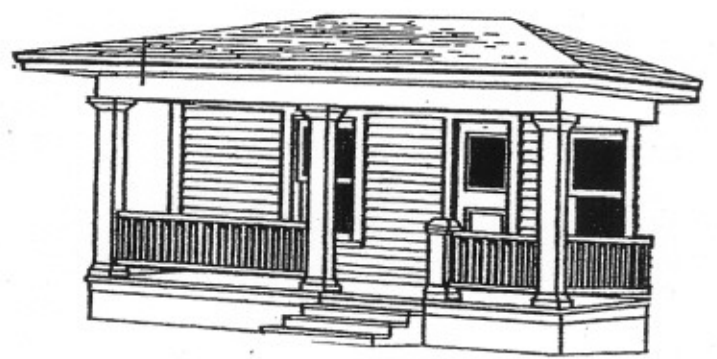


The American Four Square is recognized as a post-Victorian architectural style which was extremely popular from 1900 through 1925 in Ocean Grove. It marked a return to symmetry and simplicity of residential designs which preceded the Gothic, Stick, Eastlake and Queen Anne styles, while offering convenience of indoor plumbing, central heating, closets and more. The American Four Square is best characterized as a 2-tory box-like dwelling with a hip or pyramidal roof with a large front dormer in the attic space and at times on all sides. The front porch extends the full width of the structure with stout square or round Colonial style columns with simple equally and closely spaced square porch railing spindles. Most Four Squares in Ocean Grove are of the Colonial Revival variety featuring large 1/1 single plate window sash designs frequently placed in pairs or even threes. Siding treatments were of either wood clapboard or shingle. Window and door openings as well as building corners were trimmed with flat boards. Overhangs and eaves were well pronounced with occasional treatments featuring exposed rafter ends. As a result of their simplicity in craftsmanship and place in Ocean Grove's rich architectural history, these homes have acquired historic significance of their own.

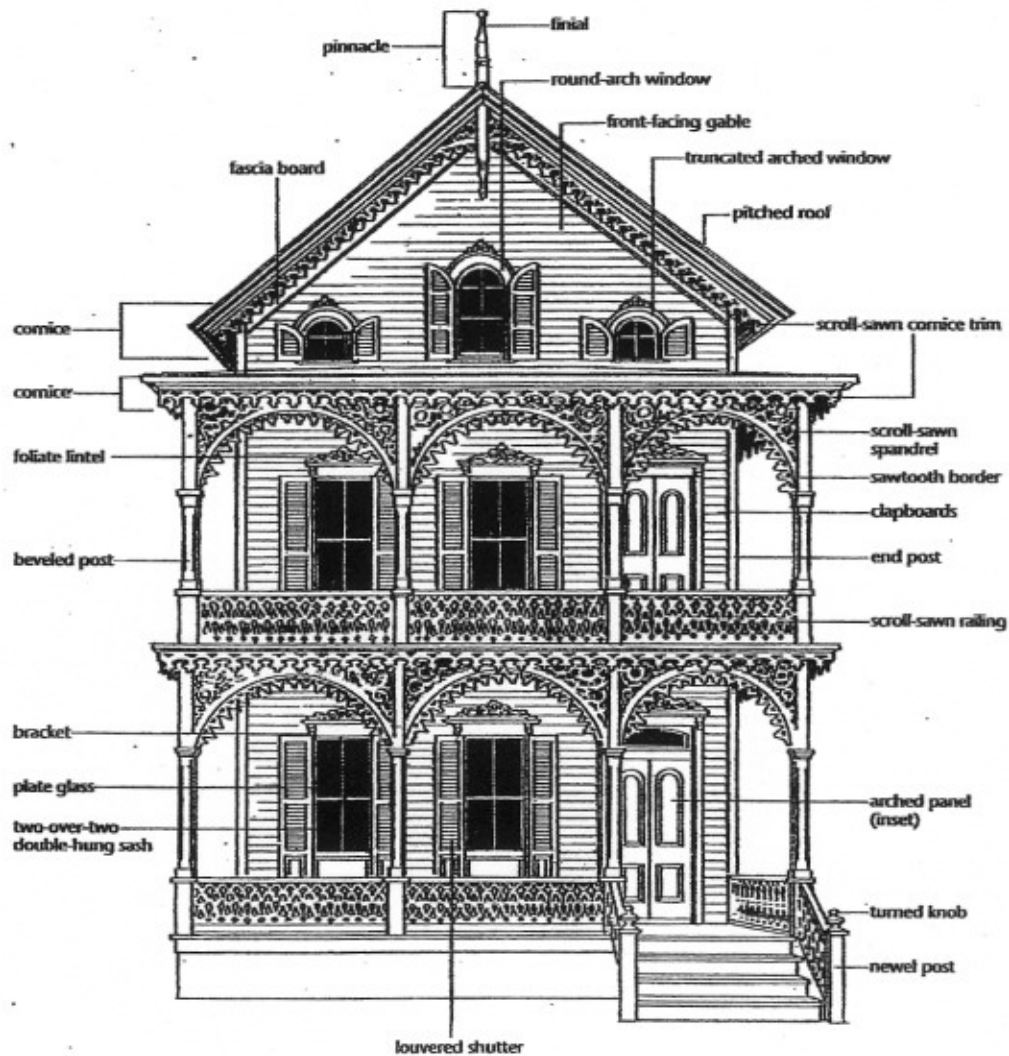
# American Four Square Details



bevel siding



# Victorian Eclectic Style

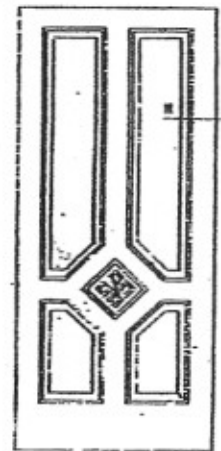
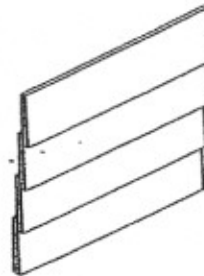
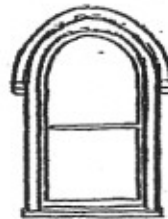
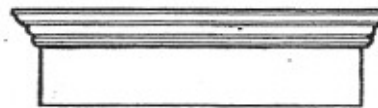
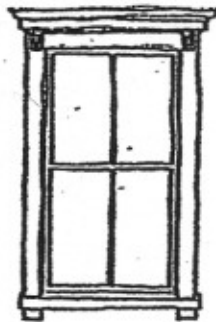
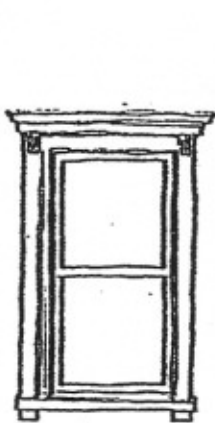
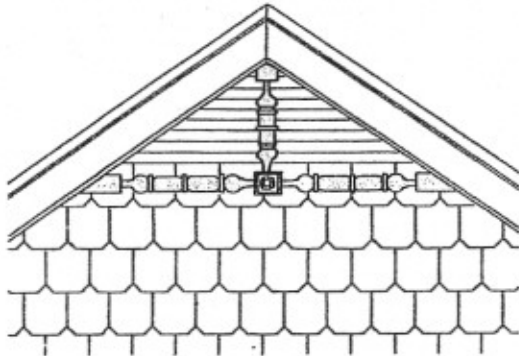
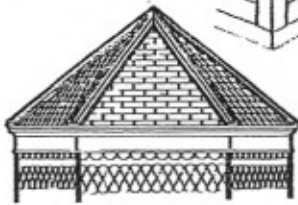
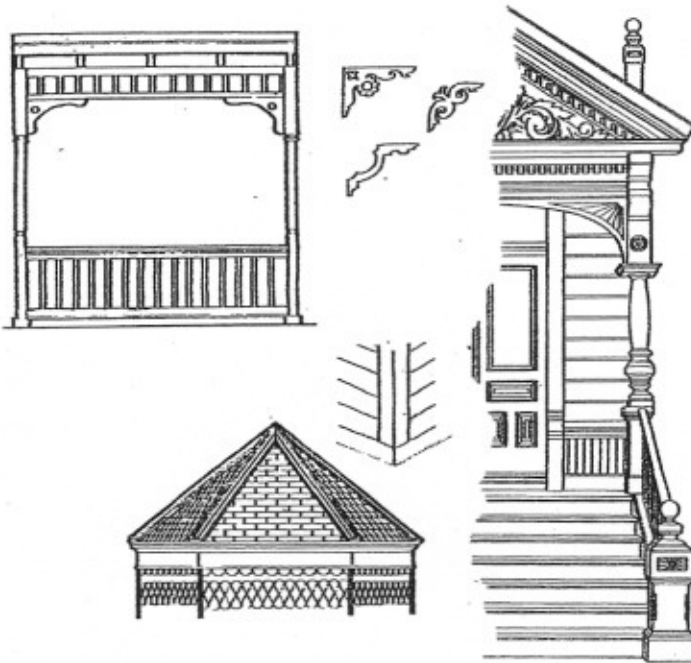


The Victorian Eclectic Style is a commonly found architectural hybrid in Ocean Grove. The 2-story and 2 1/2-story dwellings are either "L" or "T" shaped in plan and exhibit a variety of complementary stylistic influences. Specifically, elements from Italianate, Eastlake, Gothic and Queen Anne designs were freely combined in construction. Carpenters of the late 19th Century and earliest decades of the Twentieth Century borrowed from other styles with results being fanciful compositions and examples of artisanship rather than a specific architectural style. While some of the Victorian Eclectic Style structures in Ocean Grove scrollwork and elaborate trim, most display little or limited architectural ornament, relying on prominent end facing gables, ample open air 1-story and 2-story covered porches, symmetrically balanced and positioned doors and windows with wide corner trim and window and door surrounds topped with simple crown moldings and closely spaced square spindles at porch and balcony railings.

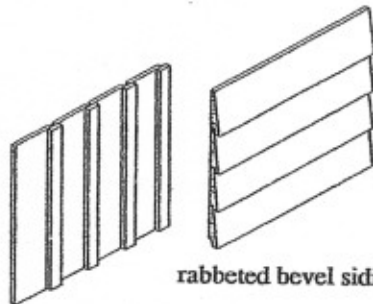
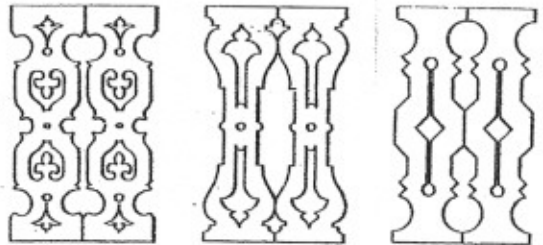
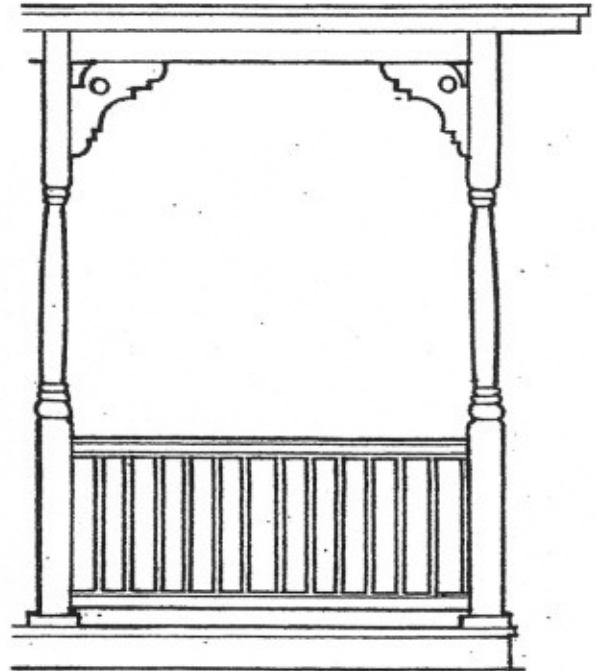
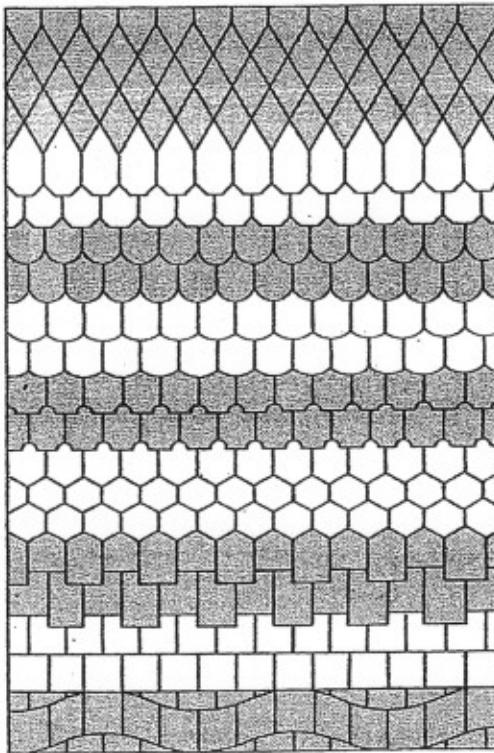
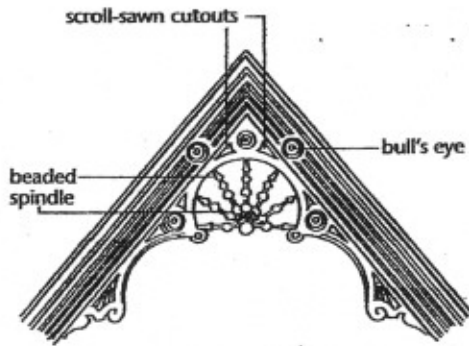
# Victorian Eclectic Details

## IDENTIFYING FEATURES

- 1 STEEPLY PITCHED ROOF OF IRREGULAR SHAPE, USUALLY WITH DOMINANT FRONT-FACING GABLE
- 2 TEXTURED SHINGLES (AND/OR OTHER DEVICES) TO AVOID SMOOTH-WALLED APPEARANCE
- 3 PARTIAL OR FULL-WIDTH ASYMMETRICAL PORCH, USUALLY ONE STORY HIGH AND EXTENDED ALONG ONE OR BOTH SIDE WALLS
- 4 ASYMMETRICAL FAÇADE

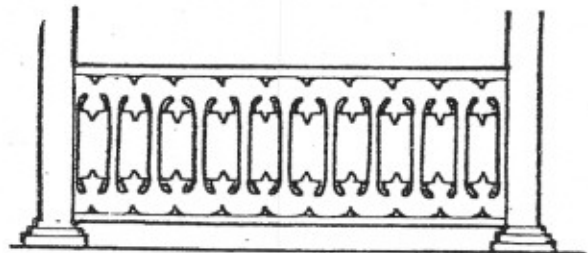


# Victorian Eclectic Details

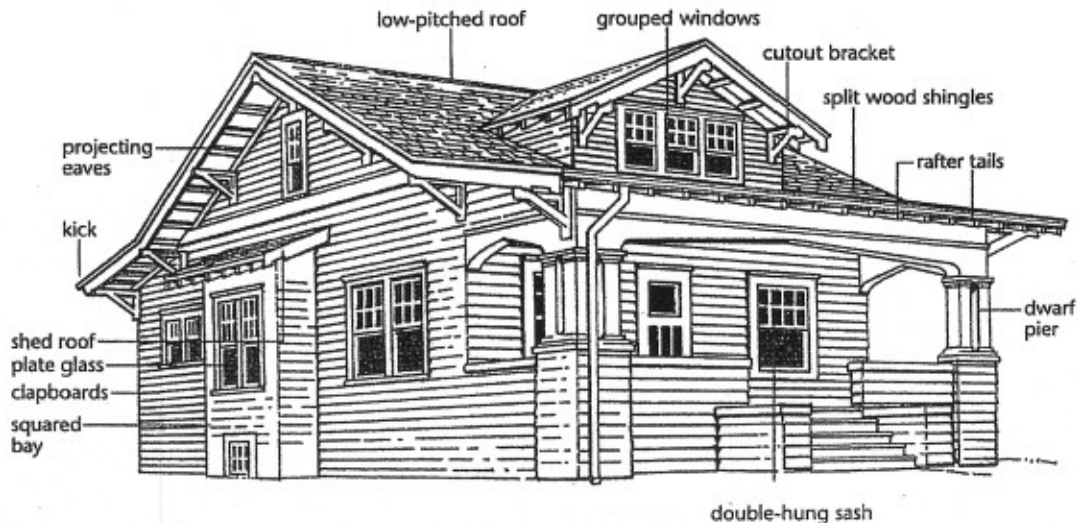


board and batten siding

rabbeted bevel siding



# Craftsman Style



Craftsman Style, also known as the Arts and Crafts Style, were popular contractor-builder residential dwellings primarily constructed between 1890 and 1920. The Arts and Crafts movement in American Architecture focused on extolling the virtues of handcrafted art and architecture versus that of the machine. The machine aesthetic was regarded as impersonal by period architects and artisans. In response, the design of a house in which all its elements, both interior and exterior, received artful attention...and variations of the Craftsman Style home were prominent nationwide.

The Craftsman Style dwelling was best suited for relatively long and narrow lots, common in most urban settings and suitable to the common 30 x 60 foot lot configurations of Ocean Grove. Craftsman architecture featured a low pitch and projecting gable roof over a one-story dwelling with just enough roof pitch, at times, to permit a partial second floor. Other distinctive features included exposed rafters, low shed dormers, tapered or pyramidal porch post or pillars, ample covered front porch space and grouped or banded double-hung windows.

Craftsman Style homes usually reflected the architecture of the region which they were built. In Ocean Grove, as throughout the Jersey Shore area, Craftsman Cottages were in harmony with the local seaside vernacular. Craftsman cottages were most often finished with painted or weathered wood shingles. However, wood clapboard and even stucco were also common choices. Exterior colors were earth tone and individuality was introduced through crafted window shutter details, added pergolas, roof eyebrows or eyelids, ornamental rafter tails, selection of post and pillar material (stone, concrete, shingle, brick or board), and integration of ornamental window sash grille work. Similarity in many of the Craftsman Style homes was a direct result of the numerous pattern books and building kits which were made available during that era.

# Craftsman Style Detail



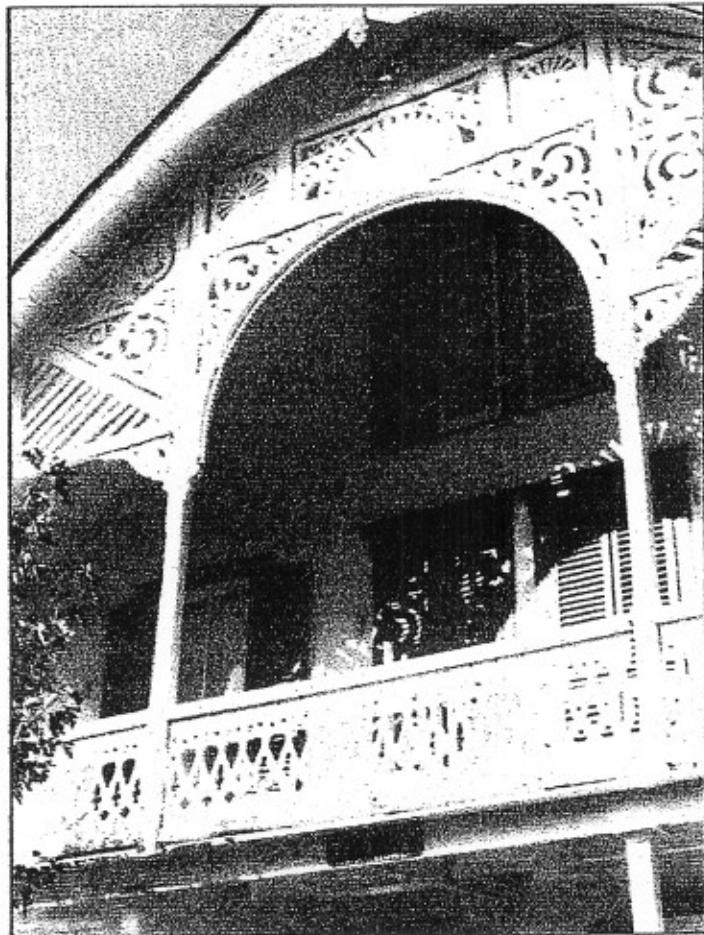
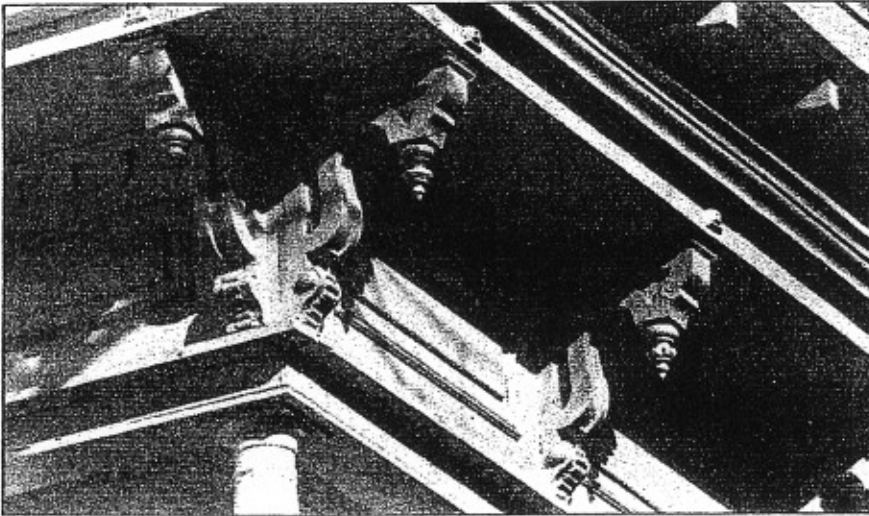
## IDENTIFYING FEATURES

- 1 LOW-PITCHED GABLED ROOF (OCCASIONALLY HIPPED) WITH WIDE, UNENCLOSED EAVE OVERHANG
- 2 ROOF RAFTERS USUALLY EXPOSED
- 3 DECORATIVE BEAMS OR BRACES UNDER GABLES
- 4 PORCH SUPPORT BASES EXTENDING TO GROUND LEVEL (WITHOUT BREAK AT LEVEL OF PORCH FLOOR)
- 5 PORCH SUPPORTS USUALLY SQUARED AND SOMETIMES SLANTING INWARD



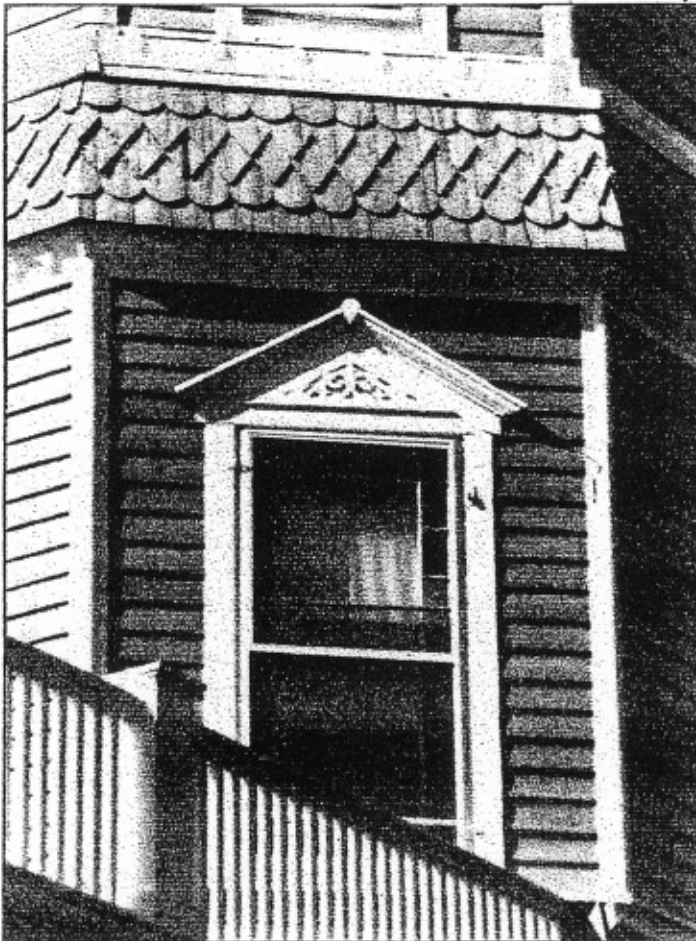
## Ocean Grove Residential Structures - Facade Design Guidelines

### **B. Proper Application of Architectural Features, Trim and Details**

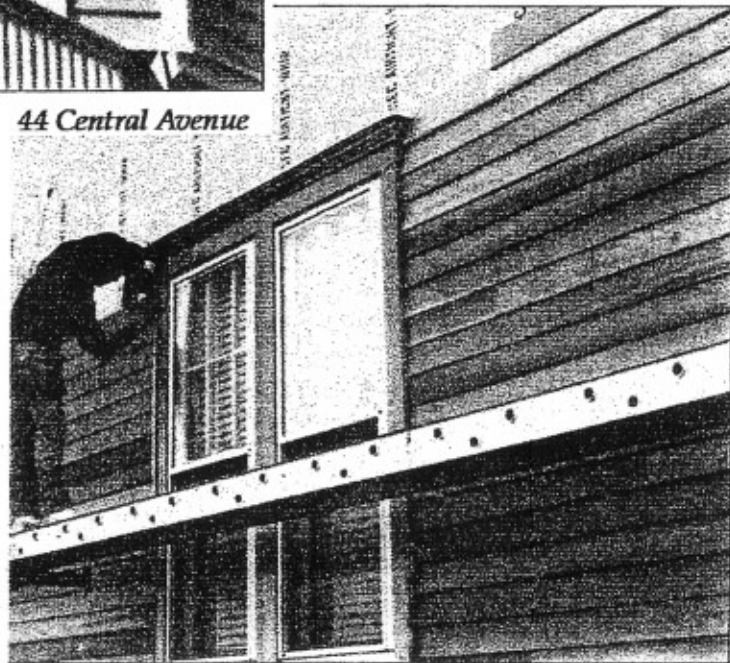


## Ocean Grove Residential Structures - Facade Design Guidelines

### B. Proper Application of Architectural Features, Trim and Details



*44 Central Avenue*



*Renovation in progress on Lake Avenue.*